

## Product datasheet for **TA322770**

### Bad Rabbit Polyclonal Antibody

#### Product data:

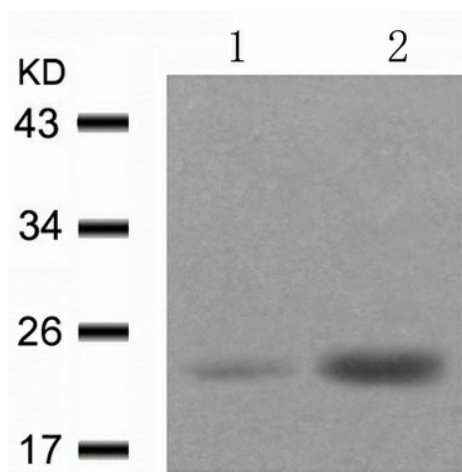
Product Type:	Primary Antibodies
Applications:	IHC, WB
Recommended Dilution:	WB: 1:500-1000, IHC: 1:50-100
Reactivity:	Mouse
Modifications:	Phospho-specific
Host:	Rabbit
Isotype:	IgG
Clonality:	Polyclonal
Immunogen:	Peptide sequence around phosphorylation site of serine136 (S-R-S(p)-A-P) derived from Mouse Bad.
Formulation:	PBS pH7.3, 0.05% NaN <sub>3</sub> , 50% glycerol
Concentration:	lot specific
Purification:	Antigen affinity purification
Conjugation:	Unconjugated
Storage:	Store at -20°C as received.
Stability:	Stable for 12 months from date of receipt.
Predicted Protein Size:	22 kDa
Gene Name:	BCL2-associated agonist of cell death
Database Link:	<a href="#">NP_031548</a> <a href="#">Entrez Gene 12015 Mouse</a> <a href="#">Q61337</a>
Background:	The protein encoded by BAD gene is a member of the BCL-2 family. BCL-2 family members are known to be regulators of programmed cell death. This protein positively regulates cell apoptosis by forming heterodimers with BCL-xL and BCL-2, and reversing their death repressor activity. Proapoptotic activity of this protein is regulated through its phosphorylation. Protein kinases AKT and MAP kinase, as well as protein phosphatase calcineurin were found to be involved in the regulation of this protein. Alternative splicing of this gene results in two transcript variants which encode the same isoform.



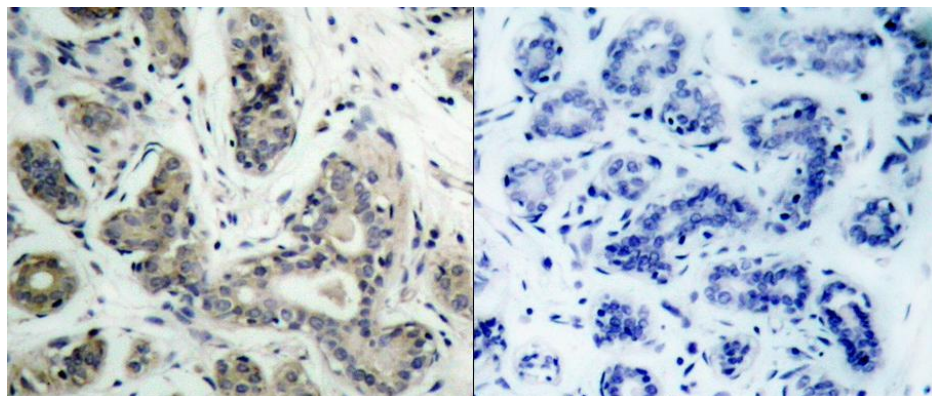
[View online »](#)

Synonyms: BBC2; BBC6; Bcl2-L-8; BCL2L8

**Product images:**



Predicted band size: 22 kDa. Positive control: HT29 cells treated with UV lysate. Recommended dilution: 1/ 500-1000. (Gel: 10%SDS-PAGE Lane 1: Untreated HT29 cells lysate Lane 2: HT29 cells treated with UV lysate Lysates: 30 ug per lane Primary antibody: 1/500 dilution Secondary antibody: Goat anti Rabbit IgG - H&L (HRP) at 1/10000 dilution Exposure time: 1 minute)



Predicted cell location: Cytoplasm. Positive control: Human breast carcinoma tissue. Recommended dilution: 1/ 50-100 The image on the left is immunohistochemistry of paraffin-embedded human breast carcinoma tissue using Bad (Phospho-Ser136) antibody at dilution 1/50, on the right is treated with the synthetic peptide. (Original magnification:x200)