

Product datasheet for **TA322767**

BCR Rabbit Polyclonal Antibody

Product data:

Product Type:	Primary Antibodies
Applications:	IHC, WB
Recommended Dilution:	WB: 1:500-1000, IHC: 1:50-100
Reactivity:	Human, Mouse
Modifications:	Phospho-specific
Host:	Rabbit
Isotype:	IgG
Clonality:	Polyclonal
Immunogen:	Peptide sequence around phosphorylation site of tyrosine 177 (P-F-Y(p)-V-N) derived from Human Bcr.
Formulation:	PBS pH7.3, 0.05% NaN ₃ , 50% glycerol
Concentration:	lot specific
Purification:	Antigen affinity purification
Conjugation:	Unconjugated
Storage:	Store at -20°C as received.
Stability:	Stable for 12 months from date of receipt.
Predicted Protein Size:	210 kDa
Gene Name:	BCR, RhoGEF and GTPase activating protein
Database Link:	NP_004318 Entrez Gene 110279 Mouse Entrez Gene 613 Human P11274



[View online »](#)

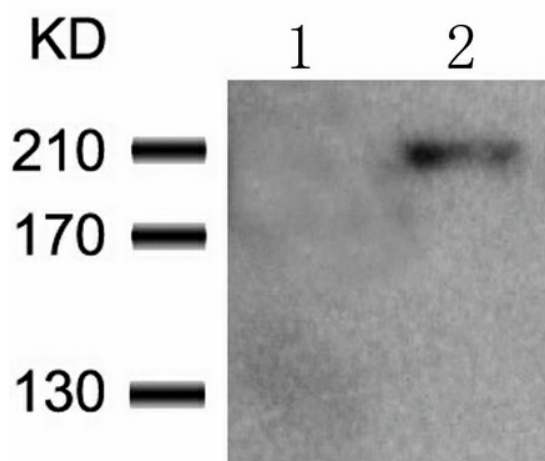
Background: A reciprocal translocation between chromosomes 22 and 9 produces the Philadelphia chromosome, which is often found in patients with chronic myelogenous leukemia. The chromosome 22 breakpoint for this translocation is located within the BCR gene. The translocation produces a fusion protein which is encoded by sequence from both BCR and ABL, the gene at the chromosome 9 breakpoint. Although the BCR-ABL fusion protein has been extensively studied, the function of the normal BCR gene product is not clear. The protein has serine/threonine kinase activity and is a GTPase-activating protein for p21rac. Two transcript variants encoding different isoforms have been found for this gene.

Synonyms: ALL; BCR1; CML; D22S11; D22S662; PHL

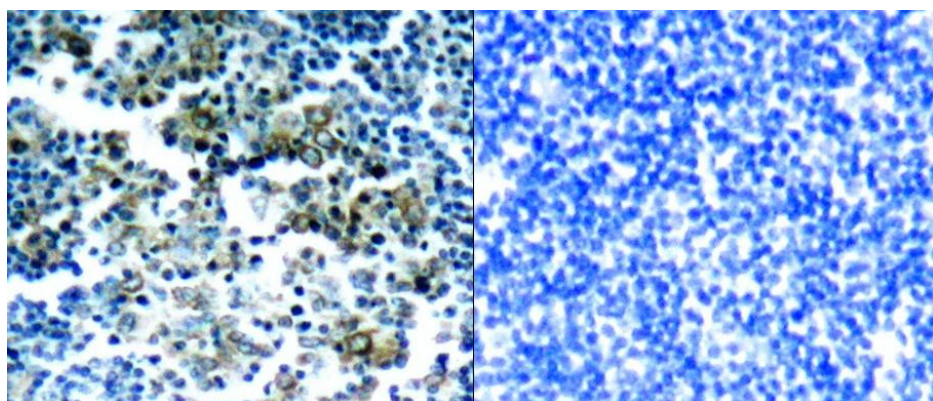
Protein Families: Druggable Genome, Protein Kinase

Protein Pathways: Chronic myeloid leukemia, Pathways in cancer

Product images:



Predicted band size: 210 kDa. Positive control: K562 cells treated with H₂O₂ lysate. Recommended dilution: 1/ 500-1000. (Gel: 8%SDS-PAGE Lane 1: K562 cells untreated with H₂O₂ lysate Lane 2: K562 cells treated with H₂O₂ lysate Lysates: 30 ug per lane Primary antibody: 1/500 dilution Secondary antibody: Goat anti Rabbit IgG - H&L (HRP) at 1/10000 dilution Exposure time: 1 minute)



Predicted cell location: Nucleus. Positive control: Human tonsil tumor tissue. Recommended dilution: 1/ 50-100 The image on the left is immunohistochemistry of paraffin-embedded human tonsil tumor tissue using BCR (Phospho-Tyr177) antibody at dilution 1/50, on the right is treated with the synthetic peptide. (Original magnification:x200)