

Product datasheet for **TA322766**

Caldesmon (CALD1) Rabbit Polyclonal Antibody

Product data:

Product Type:	Primary Antibodies
Applications:	IHC, WB
Recommended Dilution:	WB: 1000-5000 WB positive control: 293T cells IHC: 50-150 Positive control: Human testis Predicted cell location: Cytoplasm
Reactivity:	Human, Rat
Host:	Rabbit
Isotype:	IgG
Clonality:	Polyclonal
Immunogen:	Fusion protein corresponding to a region derived from 26-207 amino acids of human caldesmon 1
Formulation:	PBS pH7.3, 0.05% NaN ₃ , 50% glycerol
Concentration:	lot specific
Purification:	Antigen affinity purification
Conjugation:	Unconjugated
Storage:	Store at -20°C as received.
Stability:	Stable for 12 months from date of receipt.
Predicted Protein Size:	63 kDa
Gene Name:	caldesmon 1
Database Link:	NP_004333 Entrez Gene 25687 Rat Entrez Gene 800 Human Q05682



[View online »](#)

Background:

This gene encodes a calmodulin- and actin-binding protein that plays an essential role in the regulation of smooth muscle and nonmuscle contraction. The conserved domain of this protein possesses the binding activities to Ca(2+)-calmodulin; actin; tropomyosin; myosin; and phospholipids. This protein is a potent inhibitor of the actin-tropomyosin activated myosin MgATPase; and serves as a mediating factor for Ca(2+)-dependent inhibition of smooth muscle contraction. Alternative splicing of this gene results in multiple transcript variants encoding distinct isoforms.?

Synonyms:

CDM; H-CAD; HCAD; L-CAD; LCAD; NAG22

Protein Pathways:

Vascular smooth muscle contraction

Product images:

Gel: 10%SDS-PAGE

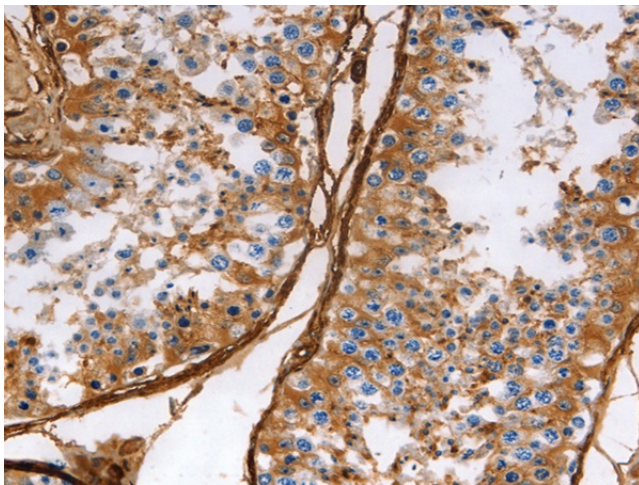
Lysate: 30 µg

Lane: 293T cells

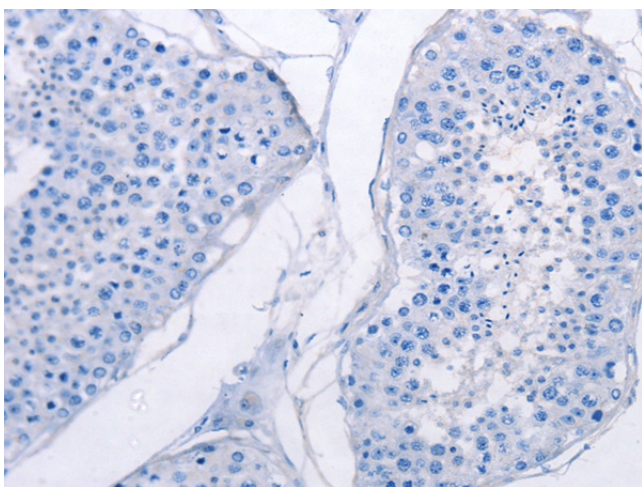
Primary antibody: TA322766 (CALD1 Antibody) at dilution 1/800

Secondary antibody: Goat anti rabbit IgG at 1/8000 dilution

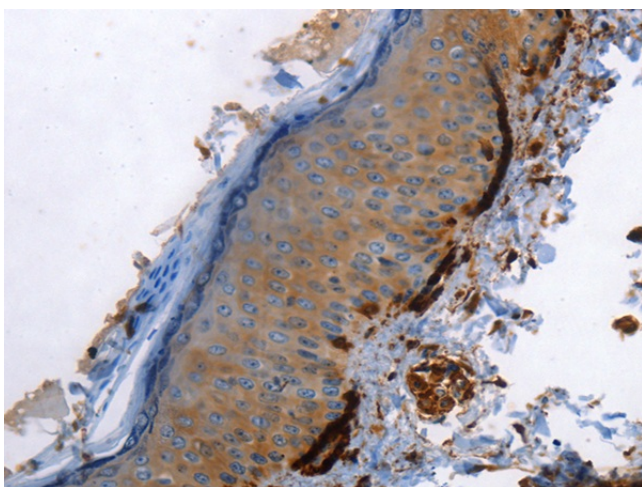
Exposure time: 30 seconds



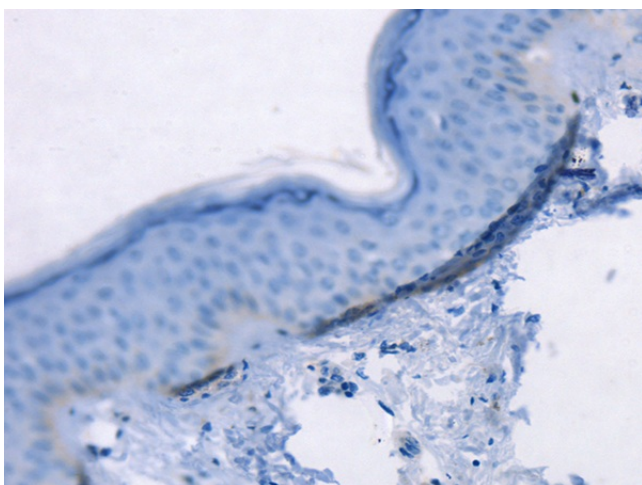
Immunohistochemistry of paraffin-embedded Human testis tissue using TA322766 (CALD1 Antibody) at dilution 1/40 (Original magnification: ×200)



Immunohistochemistry of paraffin-embedded Human testis tissue using TA322766 (CALD1 Antibody) at dilution 1/40, treated with fusion protein. (Original magnification: ×200)



Immunohistochemistry of paraffin-embedded Human skin tissue using TA322766 (CALD1 Antibody) at dilution 1/40 (Original magnification: ×200)



Immunohistochemistry of paraffin-embedded Human skin tissue using TA322766 (CALD1 Antibody) at dilution 1/40, treated with fusion protein. (Original magnification: ×200)