

## Product datasheet for **TA322765S**

### Caldesmon (CALD1) Rabbit Polyclonal Antibody

#### Product data:

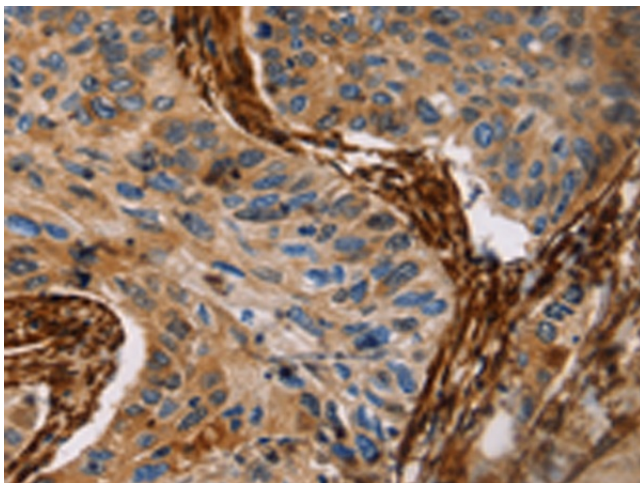
Product Type:	Primary Antibodies
Applications:	IHC
Recommended Dilution:	IHC: 50-150 Positive control: Human lung cancer Predicted cell location: Cytoplasm
Reactivity:	Human, Rat
Host:	Rabbit
Isotype:	IgG
Clonality:	Polyclonal
Immunogen:	Fusion protein corresponding to a region derived from 26-207 amino acids of human caldesmon 1
Formulation:	PBS pH7.3, 0.05% NaN <sub>3</sub> , 50% glycerol
Purification:	Antigen affinity purification
Conjugation:	Unconjugated
Storage:	Store at -20°C as received.
Stability:	Stable for 12 months from date of receipt.
Gene Name:	caldesmon 1
Database Link:	<a href="#">NP_149347</a> <a href="#">Entrez Gene 25687 Rat</a> <a href="#">Entrez Gene 800 Human</a> <a href="#">Q05682</a>
Background:	This gene encodes a calmodulin- and actin-binding protein that plays an essential role in the regulation of smooth muscle and nonmuscle contraction. The conserved domain of this protein possesses the binding activities to Ca(2+)-calmodulin; actin; tropomyosin; myosin; and phospholipids. This protein is a potent inhibitor of the actin-tropomyosin activated myosin MgATPase; and serves as a mediating factor for Ca(2+)-dependent inhibition of smooth muscle contraction. Alternative splicing of this gene results in multiple transcript variants encoding distinct isoforms.?
Synonyms:	CDM; H-CAD; HCAD; L-CAD; LCAD; NAG22



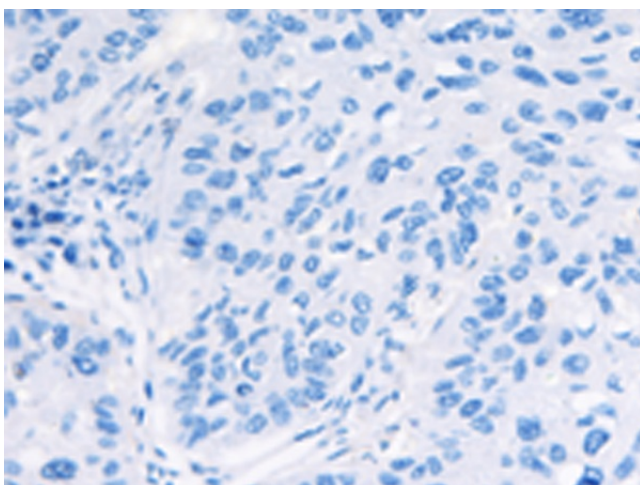
[View online »](#)

Protein Pathways: Vascular smooth muscle contraction

**Product images:**



Immunohistochemistry of paraffin-embedded Human lung cancer tissue using [TA322765] (CALD1 Antibody) at dilution 1/35 (Original magnification:  $\times 200$ )



Immunohistochemistry of paraffin-embedded Human lung cancer tissue using [TA322765] (CALD1 Antibody) at dilution 1/35, treated with fusion protein. (Original magnification:  $\times 200$ )