

Product datasheet for **TA322763S**

Caspase 3 (CASP3) Rabbit Polyclonal Antibody

Product data:

Product Type:	Primary Antibodies
Applications:	IHC, WB
Recommended Dilution:	WB: 500-2000 WB positive control: K562 cell lysate IHC: 50-200 Positive control: Human esophagus cancer Predicted cell location: Cytoplasm
Reactivity:	Human, Mouse, Rat
Host:	Rabbit
Isotype:	IgG
Clonality:	Polyclonal
Immunogen:	Fusion protein corresponding to a region derived from 1-269 amino acids of human caspase 3, apoptosis-related cysteine peptidase
Formulation:	PBS pH7.3, 0.05% NaN ₃ , 50% glycerol
Purification:	Antigen affinity purification
Conjugation:	Unconjugated
Storage:	Store at -20°C as received.
Stability:	Stable for 12 months from date of receipt.
Predicted Protein Size:	32 kDa
Gene Name:	caspase 3
Database Link:	NP_004337 Entrez Gene 12367 MouseEntrez Gene 25402 RatEntrez Gene 836 Human P42574



[View online »](#)

Background:

This gene encodes a protein which is a member of the cysteine-aspartic acid protease (caspase) family. Sequential activation of caspases plays a central role in the execution-phase of cell apoptosis. Caspases exist as inactive proenzymes which undergo proteolytic processing at conserved aspartic residues to produce two subunits; large and small; that dimerize to form the active enzyme. This protein cleaves and activates caspases 6; 7 and 9; and the protein itself is processed by caspases 8; 9 and 10. It is the predominant caspase involved in the cleavage of amyloid-beta 4A precursor protein; which is associated with neuronal death in Alzheimer's disease. Alternative splicing of this gene results in two transcript variants that encode the same protein.

Synonyms:

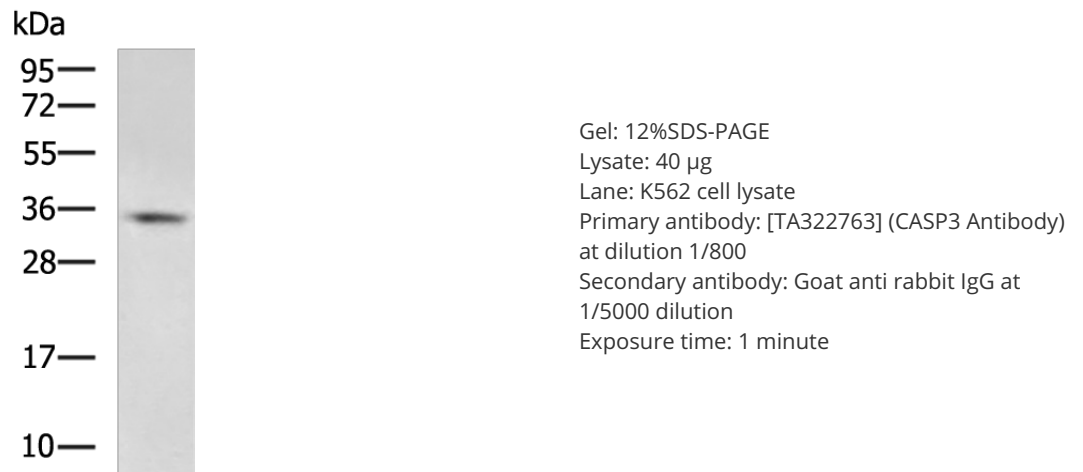
CPP32; CPP32B; SCA-1

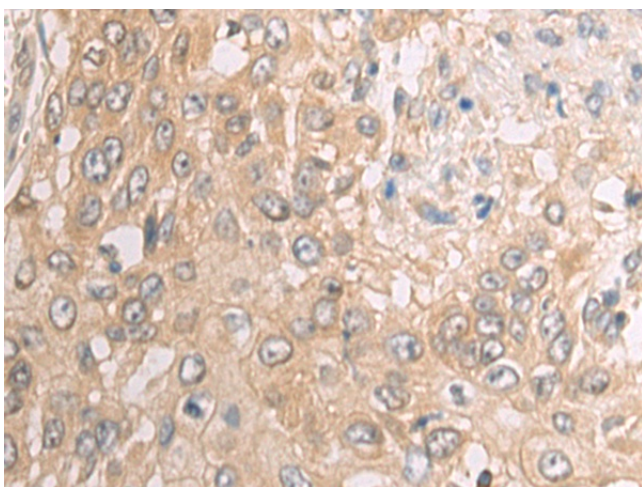
Protein Families:

Druggable Genome, ES Cell Differentiation/IPS, Protease

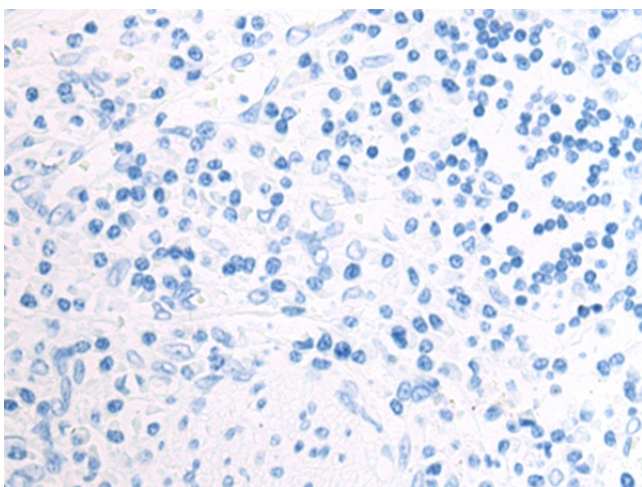
Protein Pathways:

Alzheimer's disease, Amyotrophic lateral sclerosis (ALS), Apoptosis, Colorectal cancer, Epithelial cell signaling in Helicobacter pylori infection, Huntington's disease, MAPK signaling pathway, Natural killer cell mediated cytotoxicity, p53 signaling pathway, Parkinson's disease, Pathways in cancer, Viral myocarditis

Product images:



Immunohistochemistry of paraffin-embedded Human esophagus cancer tissue using [TA322763] (CASP3 Antibody) at dilution 1/50 (Original magnification: $\times 200$)



Immunohistochemistry of paraffin-embedded Human esophagus cancer tissue using [TA322763] (CASP3 Antibody) at dilution 1/50, treated with fusion protein. (Original magnification: $\times 200$)