

## Product datasheet for **TA322760S**

### CEBP Alpha (CEBPA) Rabbit Polyclonal Antibody

#### Product data:

Product Type:	Primary Antibodies
Applications:	IHC
Recommended Dilution:	IHC: 50-100 Positive control: Human tonsil Predicted cell location: Nucleus
Reactivity:	Human, Mouse, Rat
Host:	Rabbit
Isotype:	IgG
Clonality:	Polyclonal
Immunogen:	Synthetic peptide corresponding to a region derived from 82-100 amino acids of Human CCAAT/enhancer binding protein (C/EBP), alpha
Formulation:	PBS pH7.3, 0.05% NaN <sub>3</sub> , 50% glycerol
Purification:	Antigen affinity purification
Conjugation:	Unconjugated
Storage:	Store at -20°C as received.
Stability:	Stable for 12 months from date of receipt.
Gene Name:	CCAAT/enhancer binding protein alpha
Database Link:	<a href="#">NP_004355</a> <a href="#">Entrez Gene 12606 Mouse</a> <a href="#">Entrez Gene 24252 Rat</a> <a href="#">Entrez Gene 1050 Human</a> <a href="#">P49715</a>
Background:	The protein encoded by this intronless gene is a bZIP transcription factor which can bind as a homodimer to certain promoters and enhancers. It can also form heterodimers with the related proteins CEBP-beta and CEBP-gamma. The encoded protein has been shown to bind to the promoter and modulate the expression of the gene encoding leptin; a protein that plays an important role in body weight homeostasis. Also; the encoded protein can interact with CDK2 and CDK4; thereby inhibiting these kinases and causing growth arrest in cultured cells.
Synonyms:	C; CEBP; EBP-alpha

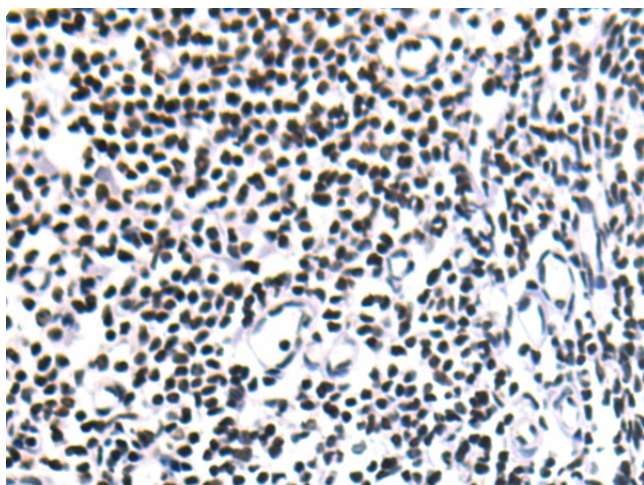


[View online »](#)

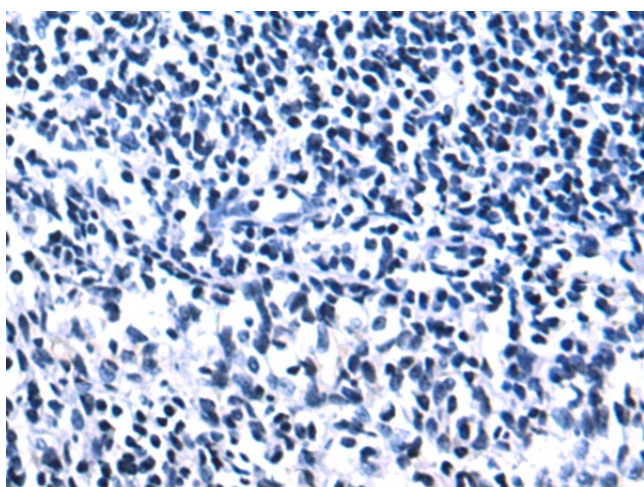
Protein Families: Druggable Genome, ES Cell Differentiation/IPS

Protein Pathways: Acute myeloid leukemia, Pathways in cancer

### Product images:



Immunohistochemistry of paraffin-embedded Human tonsil tissue using [TA322760] (CEBPA Antibody) at dilution 1/50 (Original magnification: ×200)



Immunohistochemistry of paraffin-embedded Human tonsil tissue using [TA322760] (CEBPA Antibody) at dilution 1/50, treated with synthetic peptide. (Original magnification: ×200)