

## Product datasheet for **TA322757S**

### **KAT3A / CBP (CREBBP) Rabbit Polyclonal Antibody**

#### **Product data:**

Product Type:	Primary Antibodies
Applications:	IHC
Recommended Dilution:	IHC: 5-20 Positive control: Human cervical cancer Predicted cell location: Nucleus
Reactivity:	Human, Mouse, Rat
Host:	Rabbit
Isotype:	IgG
Clonality:	Polyclonal
Immunogen:	Synthetic peptide corresponding to a region derived from 160-176 amino acids of Human
Formulation:	PBS pH7.3, 0.05% NaN <sub>3</sub> , 50% glycerol
Purification:	Antigen affinity purification
Conjugation:	Unconjugated
Storage:	Store at -20°C as received.
Stability:	Stable for 12 months from date of receipt.
Gene Name:	CREB binding protein
Database Link:	<a href="#">NP_004371</a> <a href="#">Entrez Gene 12914 Mouse</a> <a href="#">Entrez Gene 54244 Rat</a> <a href="#">Entrez Gene 1387 Human</a> <a href="#">Q92793</a>



[View online »](#)

**Background:**

This gene is ubiquitously expressed and is involved in the transcriptional coactivation of many different transcription factors. First isolated as a nuclear protein that binds to cAMP-response element binding protein (CREB); this gene is now known to play critical roles in embryonic development; growth control; and homeostasis by coupling chromatin remodeling to transcription factor recognition. The protein encoded by this gene has intrinsic histone acetyltransferase activity and also acts as a scaffold to stabilize additional protein interactions with the transcription complex. This protein acetylates both histone and non-histone proteins. This protein shares regions of very high sequence similarity with protein p300 in its bromodomain; cysteine-histidine-rich regions; and histone acetyltransferase domain. Mutations in this gene cause Rubinstein-Taybi syndrome (RTS). Chromosomal translocations involving this gene have been associated with acute myeloid leukemia. Alternative splicing results in multiple transcript variants encoding different isoforms.

**Synonyms:**

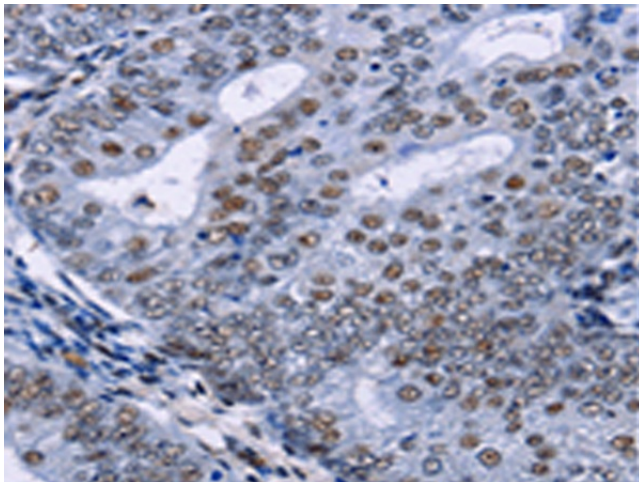
CBP; KAT3A; RSTS

**Protein Families:**

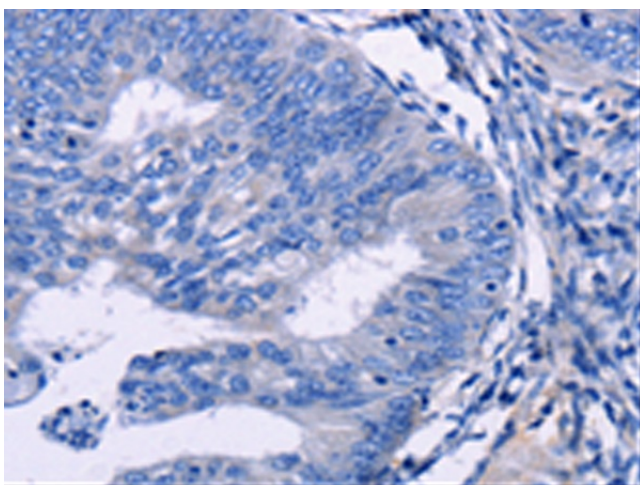
Druggable Genome

**Protein Pathways:**

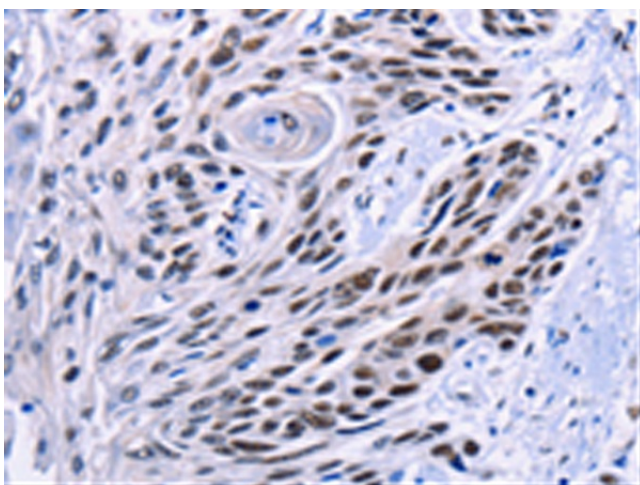
Adherens junction, Cell cycle, Huntington's disease, Jak-STAT signaling pathway, Long-term potentiation, Melanogenesis, Notch signaling pathway, Pathways in cancer, Prostate cancer, Renal cell carcinoma, TGF-beta signaling pathway, Wnt signaling pathway

**Product images:**

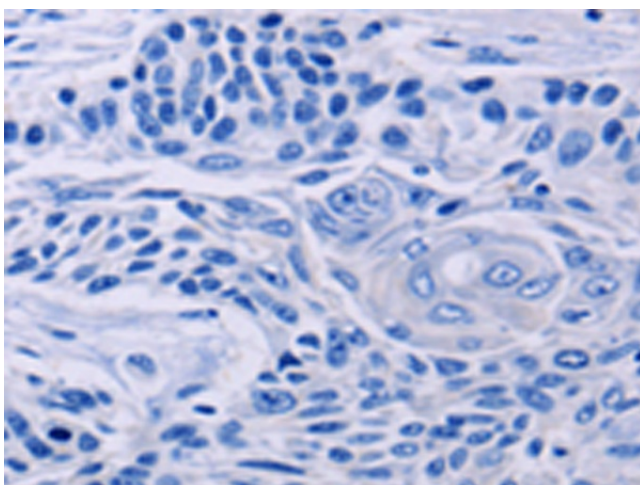
Immunohistochemistry of paraffin-embedded Human cervical cancer tissue using [TA322757] (CREBBP Antibody) at dilution 1/5 (Original magnification:  $\times 200$ )



Immunohistochemistry of paraffin-embedded Human cervical cancer tissue using [TA322757] (CREBBP Antibody) at dilution 1/5, treated with synthetic peptide. (Original magnification: ×200)



Immunohistochemistry of paraffin-embedded Human esophagus cancer tissue using [TA322757] (CREBBP Antibody) at dilution 1/5 (Original magnification: ×200)



Immunohistochemistry of paraffin-embedded Human esophagus cancer tissue using [TA322757] (CREBBP Antibody) at dilution 1/5, treated with synthetic peptide. (Original magnification: ×200)