

Product datasheet for **TA322754S**

Neurocan (NCAN) Rabbit Polyclonal Antibody

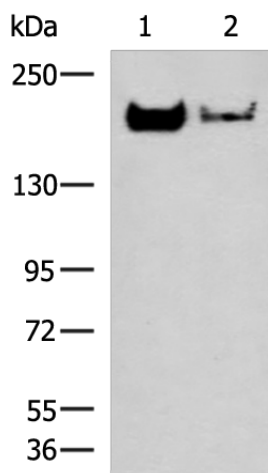
Product data:

Product Type:	Primary Antibodies
Applications:	IHC, WB
Recommended Dilution:	WB: 1000-5000 WB positive control: Mouse brain tissue and Human cerebrum tissue lysates IHC: 40-200 Positive control: Human tonsil Predicted cell location: Cytoplasm
Reactivity:	Human, Mouse, Rat
Host:	Rabbit
Isotype:	IgG
Clonality:	Polyclonal
Immunogen:	Synthetic peptide peptide corresponding to a region derived from 1309-1324 amino acids of human neurocan
Formulation:	PBS pH7.3, 0.05% NaN ₃ , 50% glycerol
Purification:	Antigen affinity purification
Conjugation:	Unconjugated
Storage:	Store at -20°C as received.
Stability:	Stable for 12 months from date of receipt.
Predicted Protein Size:	143 kDa
Gene Name:	neurocan
Database Link:	NP_004377 Entrez Gene 13004 Mouse Entrez Gene 58982 Rat Entrez Gene 1463 Human O14594
Background:	Neurocan is a chondroitin sulfate proteoglycan thought to be involved in the modulation of cell adhesion and migration. May modulate neuronal adhesion and neurite growth during development by binding to neural cell adhesion molecules (NG-CAM and N-CAM). Chondroitin sulfate proteoglycan; binds to hyaluronic acid.
Synonyms:	CSPG3

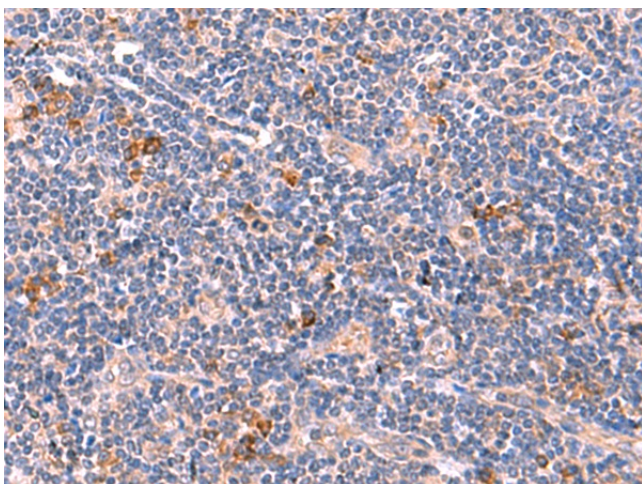


[View online »](#)

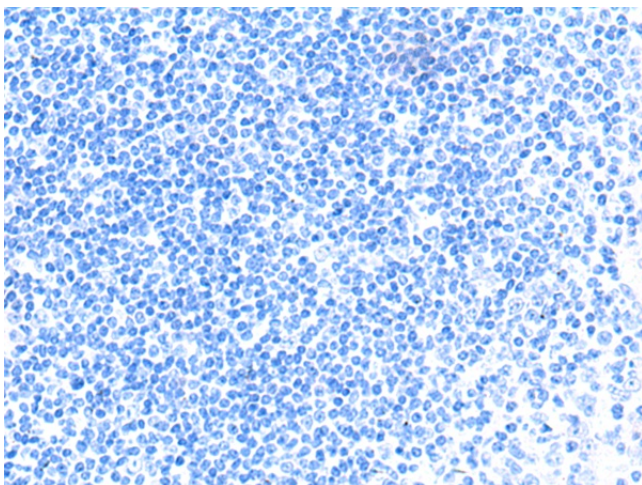
Product images:



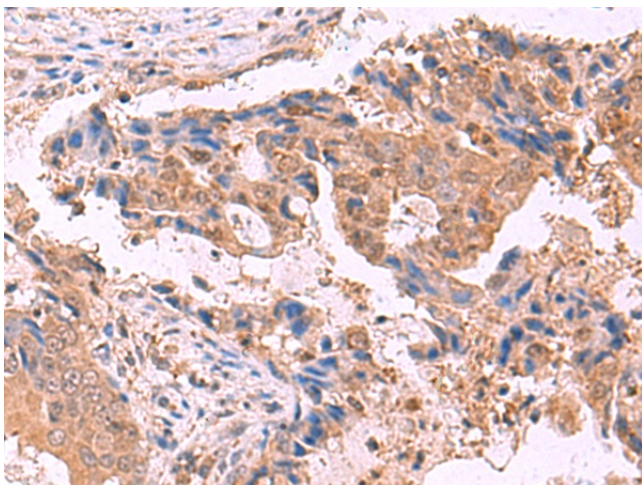
Gel: 6%SDS-PAGE
Lysate: 40 μ g
Lane 1-2: Mouse brain tissue and Human cerebrum tissue lysates
Primary antibody: [TA322754] (NCAN Antibody) at dilution 1/1000
Secondary antibody: Goat anti rabbit IgG at 1/5000 dilution
Exposure time: 20 seconds



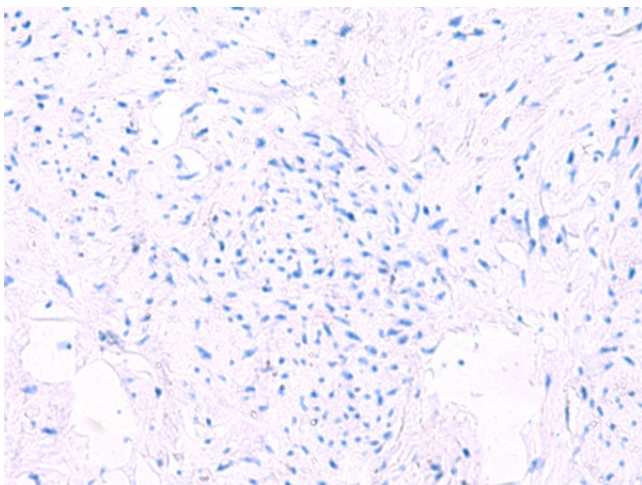
Immunohistochemistry of paraffin-embedded Human tonsil tissue using [TA322754] (NCAN Antibody) at dilution 1/45 (Original magnification: $\times 200$)



Immunohistochemistry of paraffin-embedded Human tonsil tissue using [TA322754] (NCAN Antibody) at dilution 1/45, treated with synthetic peptide. (Original magnification: $\times 200$)



Immunohistochemistry of paraffin-embedded Human cervical cancer tissue using [TA322754] (NCAN Antibody) at dilution 1/45 (Original magnification: $\times 200$)



Immunohistochemistry of paraffin-embedded Human cervical cancer tissue using [TA322754] (NCAN Antibody) at dilution 1/45, treated with synthetic peptide. (Original magnification: $\times 200$)