

Product datasheet for **TA322749**

ICAD (DFFA) Rabbit Polyclonal Antibody

Product data:

Product Type:	Primary Antibodies
Applications:	IHC
Recommended Dilution:	IHC: 25-100 Positive control: Human cervical cancer Predicted cell location: Cytoplasm, Nucleus
Reactivity:	Human
Host:	Rabbit
Isotype:	IgG
Clonality:	Polyclonal
Immunogen:	Fusion protein corresponding to N terminal 269 amino acids of human DNA fragmentation factor, 45kDa, alpha polypeptide
Formulation:	PBS pH7.3, 0.05% NaN ₃ , 50% glycerol
Concentration:	lot specific
Purification:	Antigen affinity purification
Conjugation:	Unconjugated
Storage:	Store at -20°C as received.
Stability:	Stable for 12 months from date of receipt.
Gene Name:	DNA fragmentation factor subunit alpha
Database Link:	NP_004392 Entrez Gene 1676 Human O00273



[View online »](#)

Background:

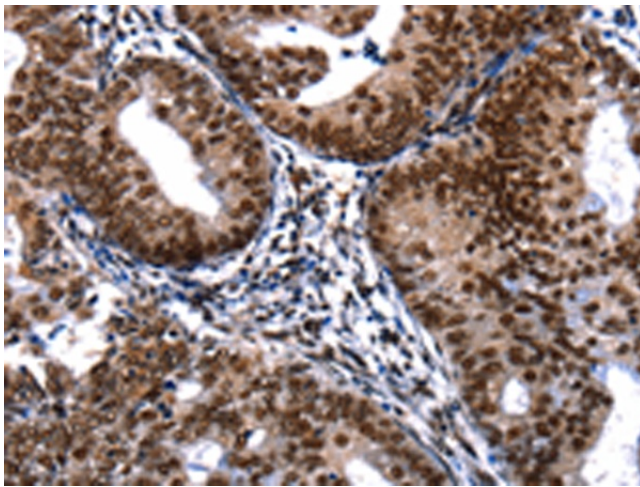
Apoptosis is a cell death process that removes toxic and/or useless cells during mammalian development. The apoptotic process is accompanied by shrinkage and fragmentation of the cells and nuclei and degradation of the chromosomal DNA into nucleosomal units. DNA fragmentation factor (DFF) is a heterodimeric protein of 40-kD (DFFB) and 45-kD (DFFA) subunits. DFFA is the substrate for caspase-3 and triggers DNA fragmentation during apoptosis. DFF becomes activated when DFFA is cleaved by caspase-3. The cleaved fragments of DFFA dissociate from DFFB; the active component of DFF. DFFB has been found to trigger both DNA fragmentation and chromatin condensation during apoptosis. Two alternatively spliced transcript variants encoding distinct isoforms have been found for this gene.?

Synonyms:

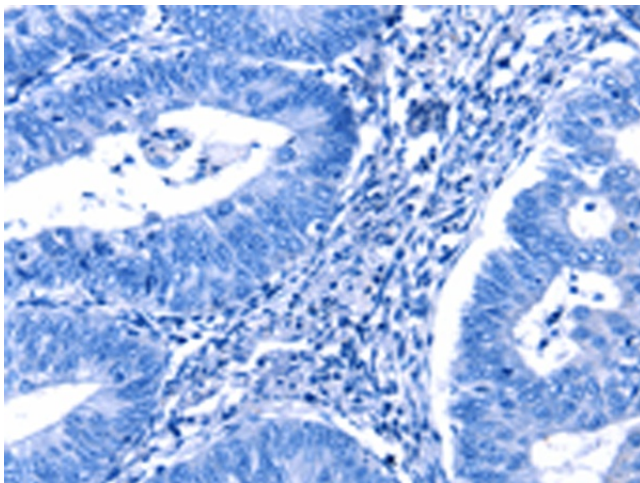
DFF-45; DFF1; ICAD

Protein Pathways:

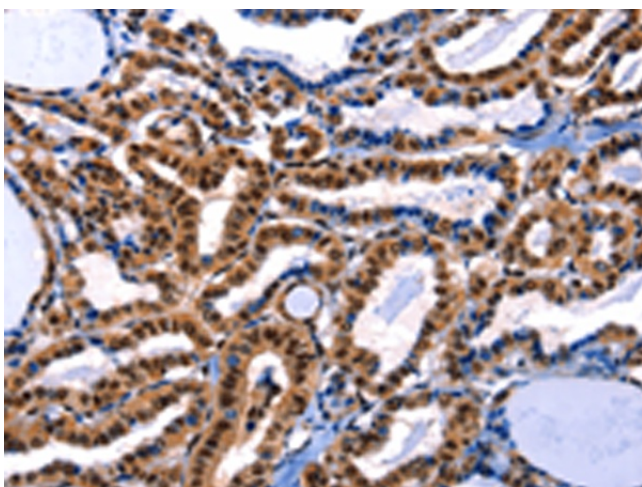
Apoptosis

Product images:

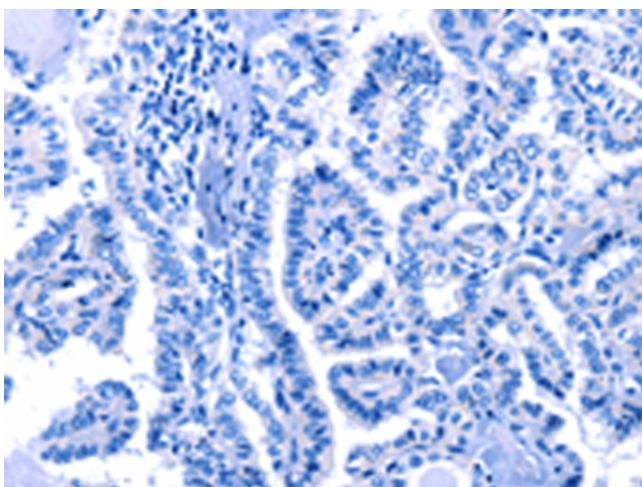
Immunohistochemistry of paraffin-embedded Human cervical cancer tissue using TA322749 (DFFA Antibody) at dilution 1/20 (Original magnification: x200)



Immunohistochemistry of paraffin-embedded Human cervical cancer tissue using TA322749 (DFFA Antibody) at dilution 1/20, treated with fusion protein. (Original magnification: x200)



Immunohistochemistry of paraffin-embedded Human thyroid cancer tissue using TA322749 (DFFA Antibody) at dilution 1/20 (Original magnification: $\times 200$)



Immunohistochemistry of paraffin-embedded Human thyroid cancer tissue using TA322749 (DFFA Antibody) at dilution 1/20, treated with fusion protein. (Original magnification: $\times 200$)