

Product datasheet for **TA322745**

Deltex (DTX1) Rabbit Polyclonal Antibody

Product data:

Product Type:	Primary Antibodies
Applications:	IHC
Recommended Dilution:	IHC: 25-100 Positive control: Human brain Predicted cell location: Cytoplasm
Reactivity:	Human, Mouse
Host:	Rabbit
Isotype:	IgG
Clonality:	Polyclonal
Immunogen:	Synthetic peptide corresponding to a region derived from 50-64 amino acids of Human deltex homolog 1 (Drosophila)
Formulation:	PBS pH7.3, 0.05% NaN ₃ , 50% glycerol
Concentration:	lot specific
Purification:	Antigen affinity purification
Conjugation:	Unconjugated
Storage:	Store at -20°C as received.
Stability:	Stable for 12 months from date of receipt.
Gene Name:	deltex 1
Database Link:	NP_004407 Entrez Gene 14357 Mouse Entrez Gene 1840 Human Q86Y01
Background:	Protein deltex-1 is a protein that in humans is encoded by the DTX1 gene. Studies in Drosophila have identified this gene as encoding a positive regulator of the Notch-signaling pathway. The human gene encodes a protein of unknown function; however; it may play a role in basic helix-loop-helix transcription factor activity. DTX1 has been shown to interact with EP300. Functions as an ubiquitin ligase protein in vivo; mediating ubiquitination and promoting degradation of MEKK1; suggesting that it may regulate the Notch pathway via some ubiquitin ligase activity.



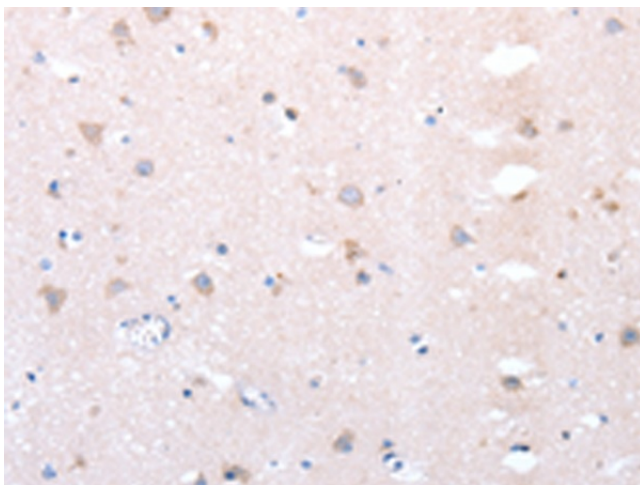
[View online »](#)

Synonyms: hDx-1

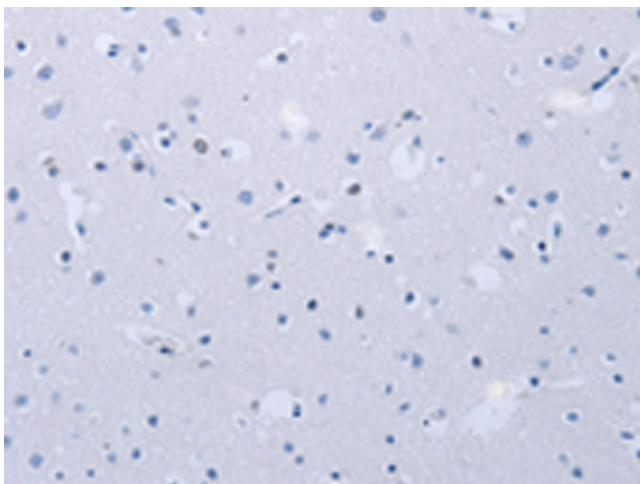
Protein Families: Druggable Genome, Transcription Factors

Protein Pathways: Notch signaling pathway

Product images:



Immunohistochemistry of paraffin-embedded Human brain tissue using TA322745 (DTX1 Antibody) at dilution 1/20 (Original magnification: ×200)



Immunohistochemistry of paraffin-embedded Human brain tissue using TA322745 (DTX1 Antibody) at dilution 1/20, treated with synthetic peptide. (Original magnification: ×200)