

## Product datasheet for **TA322744**

### DUSP8 Rabbit Polyclonal Antibody

#### Product data:

Product Type:	Primary Antibodies
Applications:	IHC, WB
Recommended Dilution:	WB: 200-1000 WB positive control: 293T cells IHC: 50-200 Positive control: Human colon cancer Predicted cell location: Cytoplasm and Nucleus
Reactivity:	Human, Mouse
Host:	Rabbit
Isotype:	IgG
Clonality:	Polyclonal
Immunogen:	Synthetic peptide corresponding to a region derived from 2-14 amino acids of Human dual specificity phosphatase 8
Formulation:	PBS pH7.3, 0.05% NaN <sub>3</sub> , 50% glycerol
Concentration:	lot specific
Purification:	Antigen affinity purification
Conjugation:	Unconjugated
Storage:	Store at -20°C as received.
Stability:	Stable for 12 months from date of receipt.
Predicted Protein Size:	66 kDa
Gene Name:	dual specificity phosphatase 8
Database Link:	<a href="#">NP_004411</a> <a href="#">Entrez Gene 18218 Mouse</a> <a href="#">Entrez Gene 1850 Human</a> <a href="#">Q13202</a>



[View online »](#)

**Background:**

The protein encoded by this gene is a member of the dual specificity protein phosphatase subfamily. These phosphatases inactivate their target kinases by dephosphorylating both the phosphoserine/threonine and phosphotyrosine residues. They negatively regulate members of the mitogen-activated protein (MAP) kinase superfamily (MAPK/ERK; SAPK/JNK; p38); which is associated with cellular proliferation and differentiation. Different members of the family of dual specificity phosphatases show distinct substrate specificities for various MAP kinases; different tissue distribution and subcellular localization; and different modes of inducibility of their expression by extracellular stimuli. This gene product inactivates SAPK/JNK and p38; is expressed predominantly in the adult brain; heart; and skeletal muscle; is localized in the cytoplasm; and is induced by nerve growth factor and insulin. An intronless pseudogene for DUSP8 is present on chromosome 10q11.2

**Synonyms:**

C11orf81; HB5; HVH-5; HVH8

**Protein Families:**

Druggable Genome, Phosphatase

**Protein Pathways:**

MAPK signaling pathway

**Product images:**

Gel: 6%SDS-PAGE

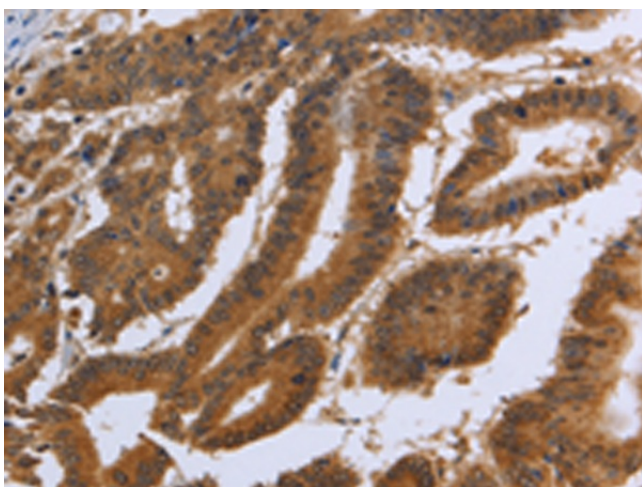
Lysate: 40 µg

Lane: 293T cells

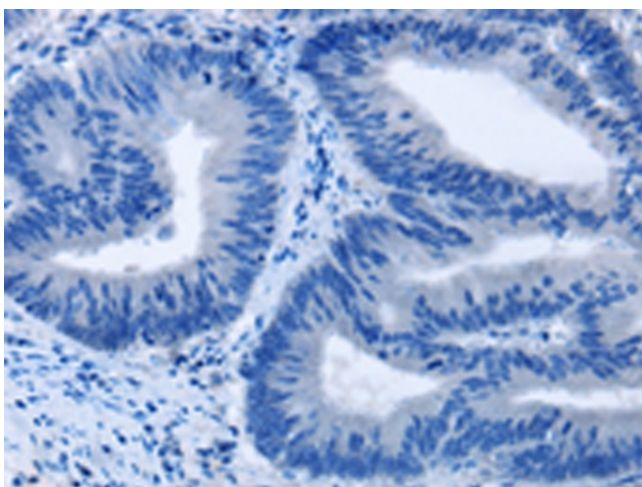
Primary antibody: TA322744 (DUSP8 Antibody) at dilution 1/200

Secondary antibody: Goat anti rabbit IgG at 1/8000 dilution

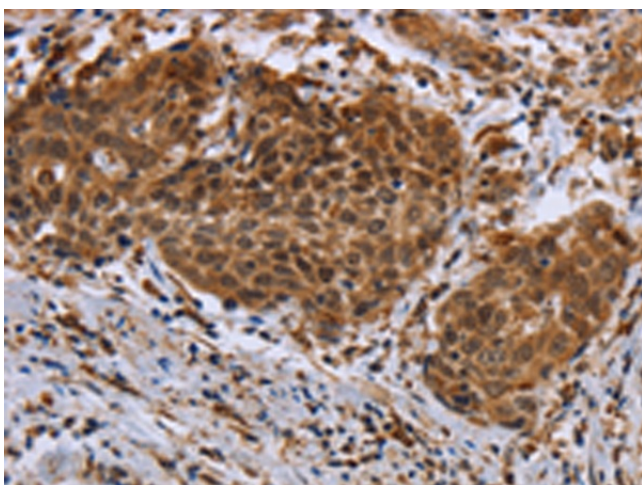
Exposure time: 3 minutes



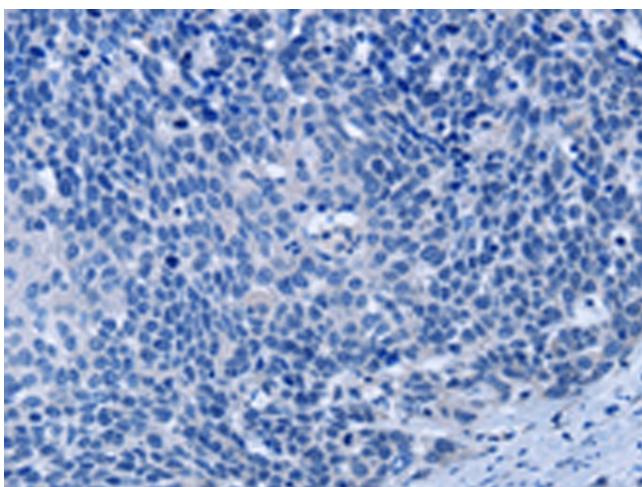
Immunohistochemistry of paraffin-embedded Human colon cancer tissue using TA322744 (DUSP8 Antibody) at dilution 1/30 (Original magnification:  $\times 200$ )



Immunohistochemistry of paraffin-embedded Human colon cancer tissue using TA322744 (DUSP8 Antibody) at dilution 1/30, treated with synthetic peptide. (Original magnification:  $\times 200$ )



Immunohistochemistry of paraffin-embedded Human cervical cancer tissue using TA322744 (DUSP8 Antibody) at dilution 1/30 (Original magnification:  $\times 200$ )



Immunohistochemistry of paraffin-embedded Human cervical cancer tissue using TA322744 (DUSP8 Antibody) at dilution 1/30, treated with synthetic peptide. (Original magnification:  $\times 200$ )