

Product datasheet for **TA322743**

DUSP8 Rabbit Polyclonal Antibody

Product data:

Product Type:	Primary Antibodies
Applications:	IHC
Recommended Dilution:	IHC: 50-200 Positive control: Human lung cancer Predicted cell location: Cytoplasm
Reactivity:	Human, Mouse
Host:	Rabbit
Isotype:	IgG
Clonality:	Polyclonal
Immunogen:	Synthetic peptide corresponding to a region derived from 2-14 amino acids of Human dual specificity phosphatase 8
Formulation:	PBS pH7.3, 0.05% NaN ₃ , 50% glycerol
Concentration:	lot specific
Purification:	Antigen affinity purification
Conjugation:	Unconjugated
Storage:	Store at -20°C as received.
Stability:	Stable for 12 months from date of receipt.
Gene Name:	dual specificity phosphatase 8
Database Link:	NP_004411 Entrez Gene 18218 Mouse Entrez Gene 1850 Human Q13202



[View online »](#)

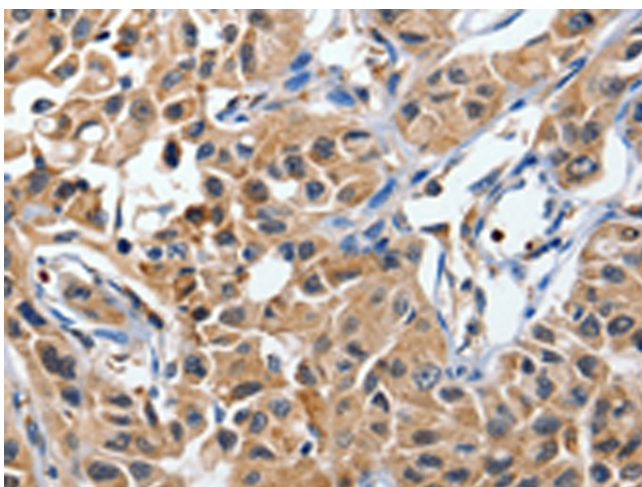
Background: The protein encoded by this gene is a member of the dual specificity protein phosphatase subfamily. These phosphatases inactivate their target kinases by dephosphorylating both the phosphoserine/threonine and phosphotyrosine residues. They negatively regulate members of the mitogen-activated protein (MAP) kinase superfamily (MAPK/ERK; SAPK/JNK; p38); which is associated with cellular proliferation and differentiation. Different members of the family of dual specificity phosphatases show distinct substrate specificities for various MAP kinases; different tissue distribution and subcellular localization; and different modes of inducibility of their expression by extracellular stimuli. This gene product inactivates SAPK/JNK and p38; is expressed predominantly in the adult brain; heart; and skeletal muscle; is localized in the cytoplasm; and is induced by nerve growth factor and insulin. An intronless pseudogene for DUSP8 is present on chromosome 10q11.2.?

Synonyms: C11orf81; HB5; HVH-5; HVH8

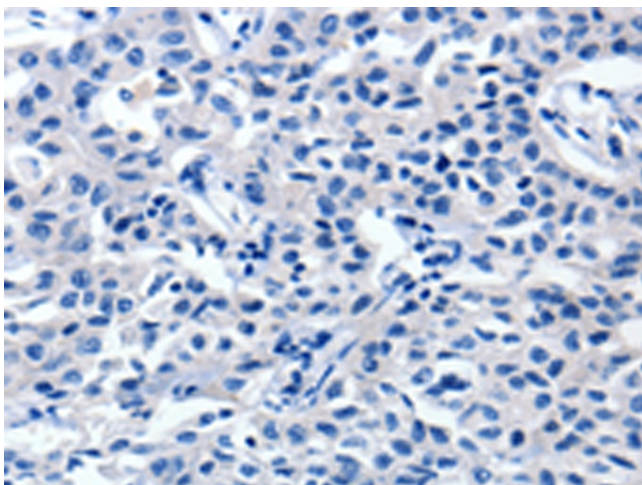
Protein Families: Druggable Genome, Phosphatase

Protein Pathways: MAPK signaling pathway

Product images:



Immunohistochemistry of paraffin-embedded Human lung cancer tissue using TA322743 (DUSP8 Antibody) at dilution 1/40 (Original magnification: $\times 200$)



Immunohistochemistry of paraffin-embedded Human lung cancer tissue using TA322743 (DUSP8 Antibody) at dilution 1/40, treated with synthetic peptide. (Original magnification: $\times 200$)