

Product datasheet for **TA322741**

Her2 (ERBB2) Rabbit Polyclonal Antibody

Product data:

Product Type:	Primary Antibodies
Applications:	WB
Recommended Dilution:	WB: 200-1000 WB positive control: A431 cells
Reactivity:	Human
Host:	Rabbit
Isotype:	IgG
Clonality:	Polyclonal
Immunogen:	Synthetic peptide corresponding to a region derived from 1220-1235 amino acids of Human v-erb-b2 erythroblastic leukemia viral oncogene homolog 2
Formulation:	PBS pH7.3, 0.05% NaN ₃ , 50% glycerol
Concentration:	lot specific
Purification:	Antigen affinity purification
Conjugation:	Unconjugated
Storage:	Store at -20°C as received.
Stability:	Stable for 12 months from date of receipt.
Predicted Protein Size:	71 kDa
Gene Name:	erb-b2 receptor tyrosine kinase 2
Database Link:	NP_004439 Entrez Gene 2064 Human P04626



[View online »](#)

Background:

This gene encodes a member of the epidermal growth factor (EGF) receptor family of receptor tyrosine kinases. This protein has no ligand binding domain of its own and therefore cannot bind growth factors. However; it does bind tightly to other ligand-bound EGF receptor family members to form a heterodimer; stabilizing ligand binding and enhancing kinase-mediated activation of downstream signalling pathways; such as those involving mitogen-activated protein kinase and phosphatidylinositol-3 kinase. Allelic variations at amino acid positions 654 and 655 of isoform a (positions 624 and 625 of isoform b) have been reported; with the most common allele; Ile654/Ile655; shown here. Amplification and/or overexpression of this gene has been reported in numerous cancers; including breast and ovarian tumors. Alternative splicing results in several additional transcript variants; some encoding different isoforms and others that have not been fully characterized.

Synonyms:

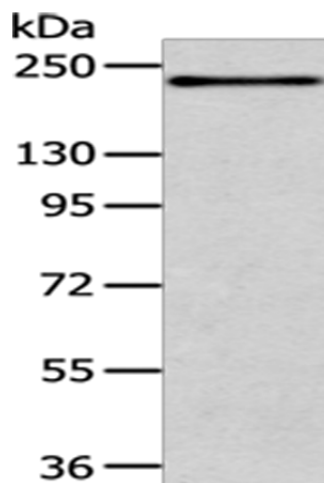
CD340; HER-2; HER2; MLN 19; NEU; neu; NGL; TKR1

Protein Families:

Druggable Genome, Protein Kinase, Transmembrane

Protein Pathways:

Adherens junction, Bladder cancer, Calcium signaling pathway, Endometrial cancer, ErbB signaling pathway, Focal adhesion, Non-small cell lung cancer, Pancreatic cancer, Pathways in cancer, Prostate cancer

Product images:

Gel: 6%SDS-PAGE
Lysate: 40 µg
Lane: A431 cells
Primary antibody: TA322741 (ERBB2 Antibody) at dilution 1/200
Secondary antibody: Goat anti rabbit IgG at 1/8000 dilution
Exposure time: 1 minute