

## Product datasheet for **TA322738**

### FOXD1 Rabbit Polyclonal Antibody

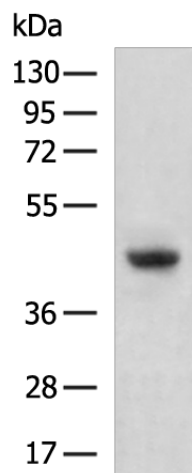
#### Product data:

Product Type:	Primary Antibodies
Applications:	WB
Recommended Dilution:	WB: 500-2000 WB positive control: A431 cell lysate
Reactivity:	Human, Mouse
Host:	Rabbit
Isotype:	IgG
Clonality:	Polyclonal
Immunogen:	Synthetic peptide corresponding to a region derived from 3-18 amino acids of Human Forkhead box protein D1
Formulation:	PBS pH7.3, 0.05% NaN <sub>3</sub> , 50% glycerol
Concentration:	lot specific
Purification:	Antigen affinity purification
Conjugation:	Unconjugated
Storage:	Store at -20°C as received.
Stability:	Stable for 12 months from date of receipt.
Predicted Protein Size:	46 kDa
Gene Name:	forkhead box D1
Database Link:	<a href="#">NP_004463</a> <a href="#">Entrez Gene 15229 Mouse</a> <a href="#">Entrez Gene 2297 Human</a> <a href="#">Q16676</a>
Background:	This intronless gene belongs to the forkhead family of transcription factors which is characterized by a distinct forkhead domain. The specific function of this gene has not yet been determined; however, it may play a role in tumor formation.
Synonyms:	FKHL8; FREAC-4; FREAC4
Protein Families:	Transcription Factors



[View online »](#)

## Product images:



Gel: 8%SDS-PAGE  
Lysate: 40  $\mu$ g  
Lane: A431 cell lysate  
Primary antibody: TA322738 (FOXD1 Antibody) at dilution 1/400  
Secondary antibody: Goat anti rabbit IgG at 1/5000 dilution  
Exposure time: 5 minutes