

Product datasheet for **TA322737**

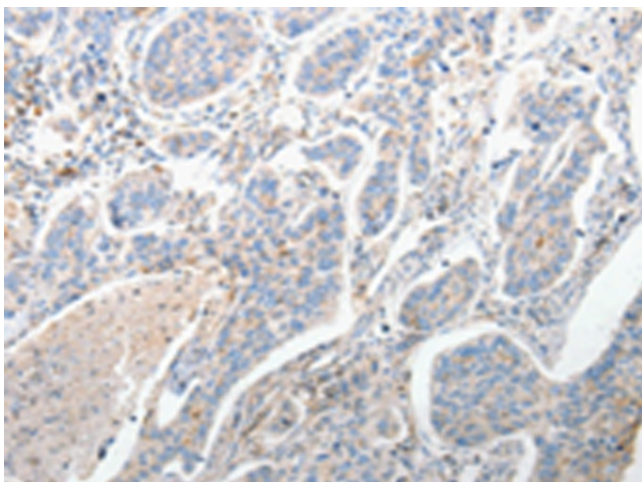
FOXD1 Rabbit Polyclonal Antibody

Product data:

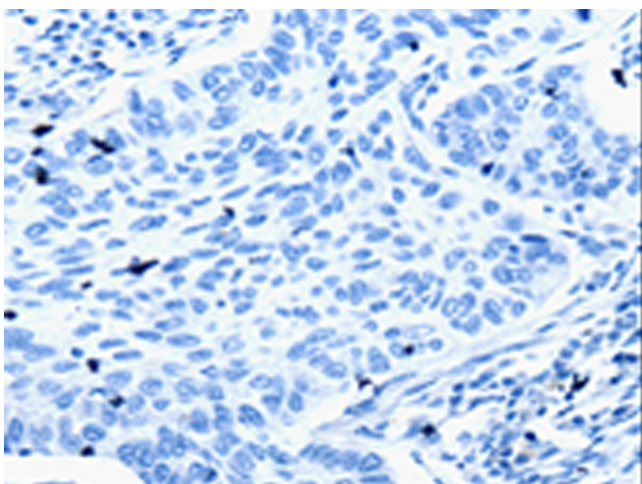
Product Type:	Primary Antibodies
Applications:	IHC
Recommended Dilution:	IHC: 10-50 Positive control: Human lung cancer Predicted cell location: Cytoplasm, Nucleus
Reactivity:	Human, Mouse
Host:	Rabbit
Isotype:	IgG
Clonality:	Polyclonal
Immunogen:	Synthetic peptide corresponding to a region derived from 3-18 amino acids of Human Forkhead box protein D1
Formulation:	PBS pH7.3, 0.05% NaN ₃ , 50% glycerol
Concentration:	lot specific
Purification:	Antigen affinity purification
Conjugation:	Unconjugated
Storage:	Store at -20°C as received.
Stability:	Stable for 12 months from date of receipt.
Gene Name:	forkhead box D1
Database Link:	NP_004463 Entrez Gene 15229 Mouse Entrez Gene 2297 Human Q16676
Background:	This intronless gene belongs to the forkhead family of transcription factors which is characterized by a distinct forkhead domain. The specific function of this gene has not yet been determined; however; it may play a role in tumor formation.
Synonyms:	FKHL8; FREAC-4; FREAC4
Protein Families:	Transcription Factors



[View online »](#)

Product images:


Immunohistochemistry of paraffin-embedded Human lung cancer tissue using TA322737 (FOXD1 Antibody) at dilution 1/25 (Original magnification: ×200)



Immunohistochemistry of paraffin-embedded Human lung cancer tissue using TA322737 (FOXD1 Antibody) at dilution 1/25, treated with synthetic peptide. (Original magnification: ×200)