

Product datasheet for **TA322736S**

GRB 14 (GRB14) Rabbit Polyclonal Antibody

Product data:

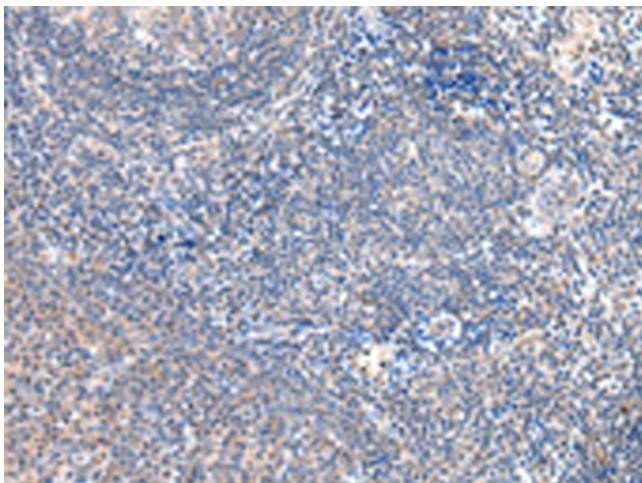
Product Type:	Primary Antibodies
Applications:	IHC
Recommended Dilution:	IHC: 25-100 Positive control: Human tonsil Predicted cell location: Cytoplasm
Reactivity:	Human, Mouse, Rat
Host:	Rabbit
Isotype:	IgG
Clonality:	Polyclonal
Immunogen:	Fusion protein corresponding to a region derived from 234-342 amino acids of human growth factor receptor-bound protein 14
Formulation:	PBS pH7.3, 0.05% NaN ₃ , 50% glycerol
Purification:	Antigen affinity purification
Conjugation:	Unconjugated
Storage:	Store at -20°C as received.
Stability:	Stable for 12 months from date of receipt.
Predicted Protein Size:	61 kDa
Gene Name:	growth factor receptor bound protein 14
Database Link:	NP_004481 Entrez Gene 50915 Mouse Entrez Gene 58844 Rat Entrez Gene 2888 Human Q14449
Background:	The product of this gene belongs to a small family of adapter proteins that are known to interact with a number of receptor tyrosine kinases and signaling molecules. This gene encodes a growth factor receptor-binding protein that interacts with insulin receptors and insulin-like growth-factor receptors. This protein likely has an inhibitory effect on receptor tyrosine kinase signaling and; in particular; on insulin receptor signaling. This gene may play a role in signaling pathways that regulate growth and metabolism. Transcript variants have been reported for this gene; but their full-length natures have not been determined to date.



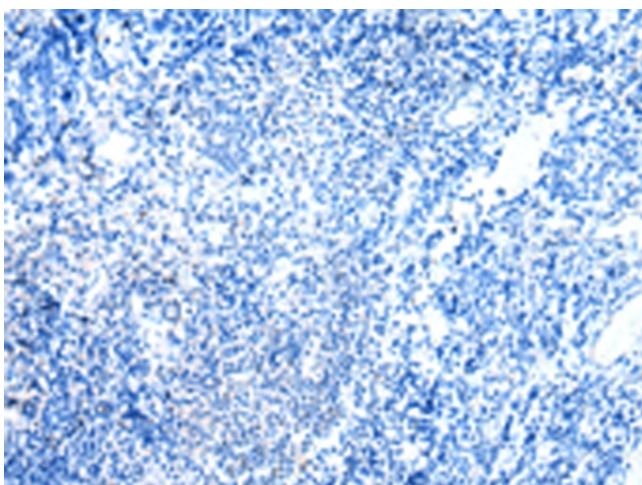
[View online »](#)

Synonyms: growth factor receptor-bound protein 14

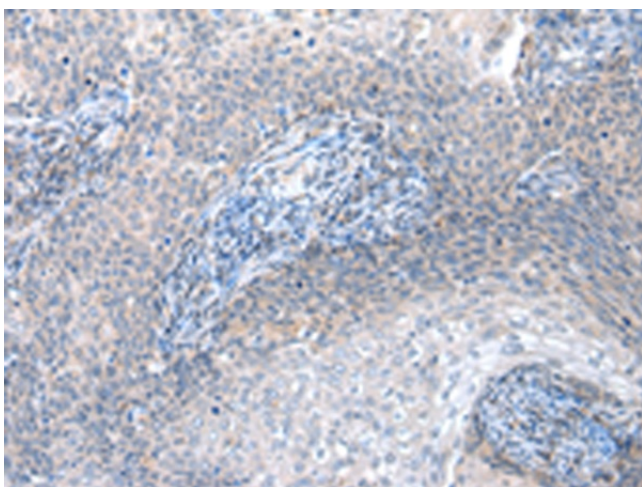
Product images:



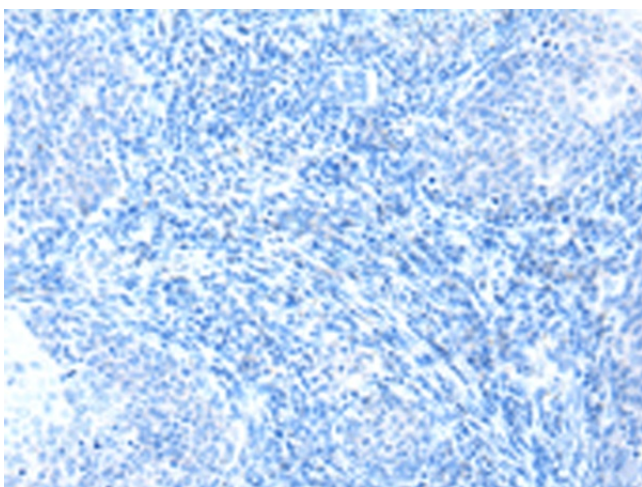
Immunohistochemistry of paraffin-embedded Human tonsil tissue using [TA322736] (GRB14 Antibody) at dilution 1/20 (Original magnification: ×200)



Immunohistochemistry of paraffin-embedded Human tonsil tissue using [TA322736] (GRB14 Antibody) at dilution 1/20, treated with fusion protein. (Original magnification: ×200)



Immunohistochemistry of paraffin-embedded Human cervical cancer tissue using [TA322736] (GRB14 Antibody) at dilution 1/20 (Original magnification: $\times 200$)



Immunohistochemistry of paraffin-embedded Human cervical cancer tissue using [TA322736] (GRB14 Antibody) at dilution 1/20, treated with fusion protein. (Original magnification: $\times 200$)