

## Product datasheet for **TA322733**

### **NAP1L1 Rabbit Polyclonal Antibody**

#### **Product data:**

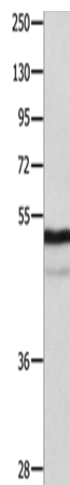
<b>Product Type:</b>	Primary Antibodies
<b>Applications:</b>	IHC, WB
<b>Recommended Dilution:</b>	WB: 1000-5000 WB positive control: Mouse thymus tissue IHC: 50-200 Positive control: Human tonsil Predicted cell location: cytoplasm
<b>Reactivity:</b>	Human, Mouse, Rat
<b>Host:</b>	Rabbit
<b>Isotype:</b>	IgG
<b>Clonality:</b>	Polyclonal
<b>Immunogen:</b>	Fusion protein corresponding to N terminal 300 amino acids of human nucleosome assembly protein 1-like 1
<b>Formulation:</b>	PBS pH7.3, 0.05% NaN <sub>3</sub> , 50% glycerol
<b>Concentration:</b>	lot specific
<b>Purification:</b>	Antigen affinity purification
<b>Conjugation:</b>	Unconjugated
<b>Storage:</b>	Store at -20°C as received.
<b>Stability:</b>	Stable for 12 months from date of receipt.
<b>Predicted Protein Size:</b>	45 kDa
<b>Gene Name:</b>	nucleosome assembly protein 1 like 1
<b>Database Link:</b>	<a href="#">NP_004528</a> <a href="#">Entrez Gene 53605 Mouse</a> <a href="#">Entrez Gene 89825 Rat</a> <a href="#">Entrez Gene 4673 Human</a> <a href="#">P55209</a>
<b>Background:</b>	This gene encodes a member of the nucleosome assembly protein (NAP) family. This protein participates in DNA replication and may play a role in modulating chromatin formation and contribute to the regulation of cell proliferation. Alternative splicing of this gene results in several transcript variants; however; not all have been fully described.?



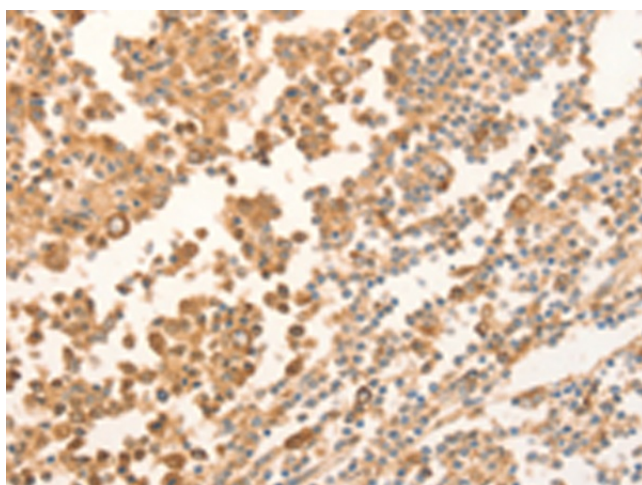
[View online »](#)

Synonyms: NAP1; NAP1L; NRP

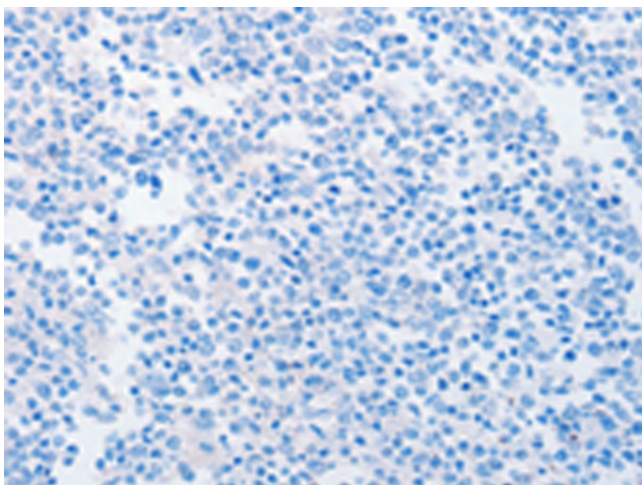
### Product images:



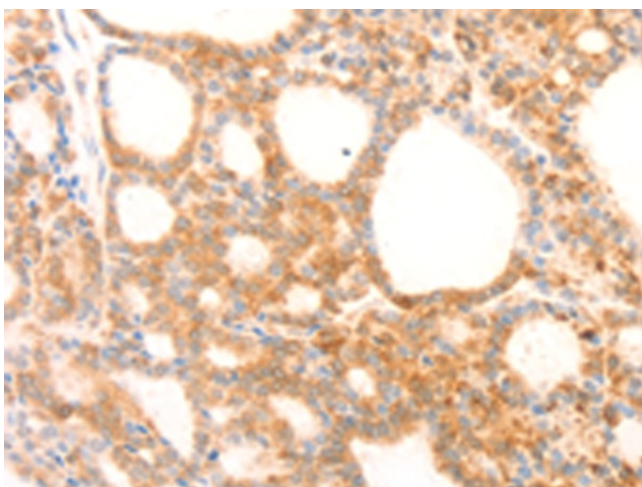
Gel: 10%SDS-PAGE  
Lysate: 40 µg  
Lane: Mouse thymus tissue  
Primary antibody: TA322733 (NAP1L1 Antibody)  
at dilution 1/1000  
Secondary antibody: Goat anti rabbit IgG at  
1/8000 dilution  
Exposure time: 40 seconds



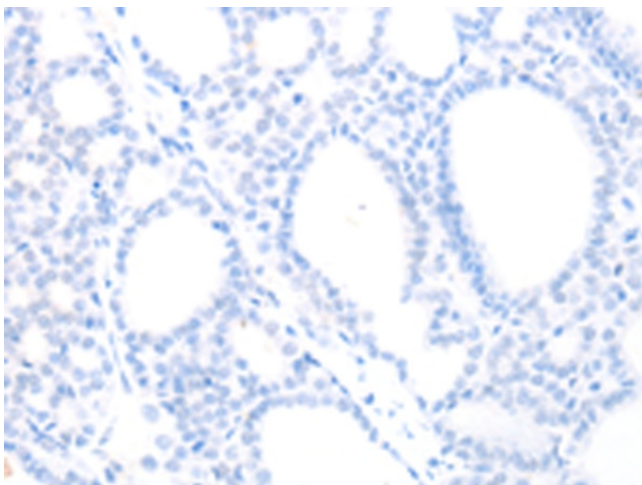
Immunohistochemistry of paraffin-embedded  
Human tonsil tissue using TA322733 (NAP1L1  
Antibody) at dilution 1/70 (Original magnification:  
×200)



Immunohistochemistry of paraffin-embedded Human tonsil tissue using TA322733 (NAP1L1 Antibody) at dilution 1/70, treated with fusion protein. (Original magnification:  $\times 200$ )



Immunohistochemistry of paraffin-embedded Human thyroid cancer tissue using TA322733 (NAP1L1 Antibody) at dilution 1/70 (Original magnification:  $\times 200$ )



Immunohistochemistry of paraffin-embedded Human thyroid cancer tissue using TA322733 (NAP1L1 Antibody) at dilution 1/70, treated with fusion protein. (Original magnification:  $\times 200$ )