

Product datasheet for **TA322732**

LRP2 Rabbit Polyclonal Antibody

Product data:

Product Type:	Primary Antibodies
Applications:	IHC
Recommended Dilution:	IHC: 15-50 Positive control: Human esophagus cancer Predicted cell location: Cytoplasm, Cell membrane
Reactivity:	Human, Mouse, Rat
Host:	Rabbit
Isotype:	IgG
Clonality:	Polyclonal
Immunogen:	Synthetic peptide corresponding to a region derived from 4642-4654 amino acids of Human low density lipoprotein receptor-related protein 2
Formulation:	PBS pH7.3, 0.05% NaN ₃ , 50% glycerol
Concentration:	lot specific
Purification:	Antigen affinity purification
Conjugation:	Unconjugated
Storage:	Store at -20°C as received.
Stability:	Stable for 12 months from date of receipt.
Gene Name:	LDL receptor related protein 2
Database Link:	NP_004516 Entrez Gene 14725 MouseEntrez Gene 29216 RatEntrez Gene 4036 Human P98164



[View online »](#)

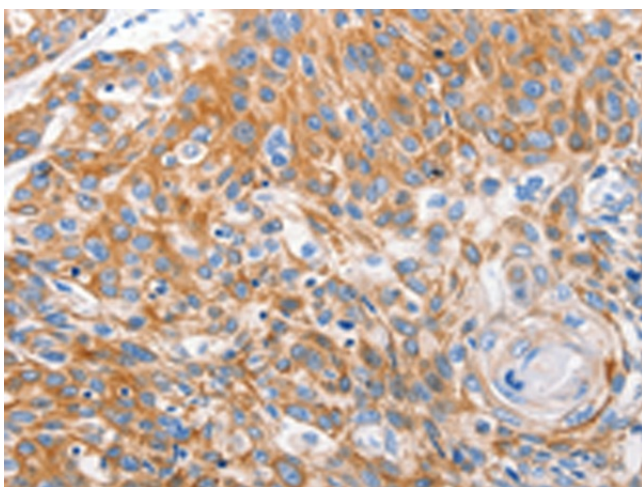
Background: The protein encoded by this gene; low density lipoprotein-related protein 2 (LRP2) or megalin; is a multi-ligand endocytic receptor that is expressed in many different tissues but primarily in absorptive epithelial tissues such as the kidney. This glycoprotein has a large amino-terminal extracellular domain; a single transmembrane domain; and a short carboxy-terminal cytoplasmic tail. The extracellular ligand-binding-domains bind diverse macromolecules including albumin; apolipoproteins B and E; and lipoprotein lipase. The LRP2 protein is critical for the reuptake of numerous ligands; including lipoproteins; sterols; vitamin-binding proteins; and hormones. This protein also has a role in cell-signaling; extracellular ligands include parathyroid hormones and the morphogen sonic hedgehog while cytosolic ligands include MAP kinase scaffold proteins and JNK interacting proteins. Recycling of this membrane receptor is regulated by phosphorylation of its cytoplasmic domain. Mutations in this gene cause Donnai-Barrow syndrome (DBS) and facio-oculoacoustico-renal syndrome (FOAR).

Synonyms: DBS; GP330

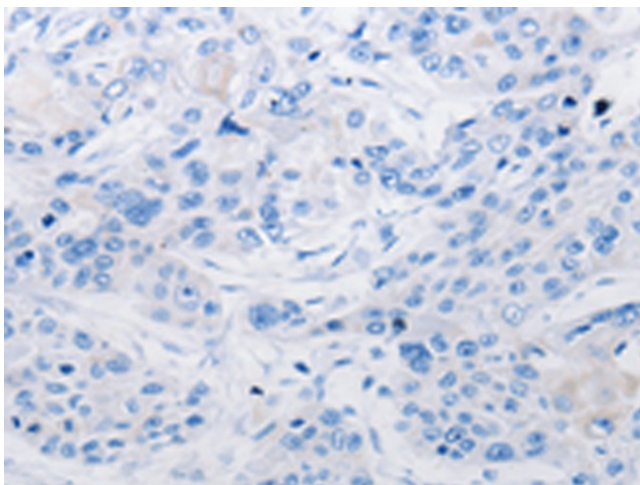
Protein Families: Druggable Genome, Transmembrane

Protein Pathways: Hedgehog signaling pathway

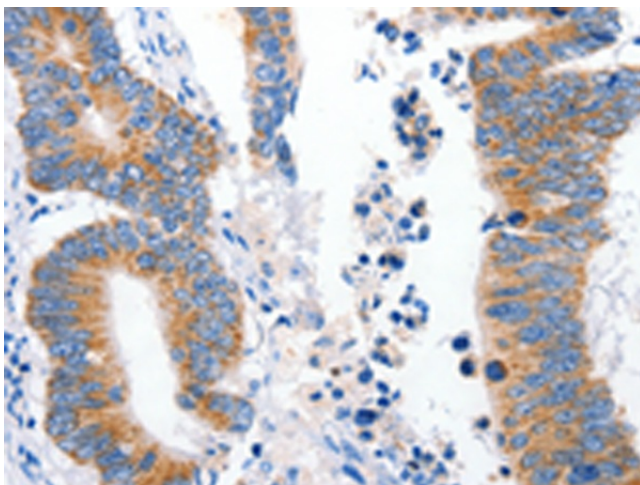
Product images:



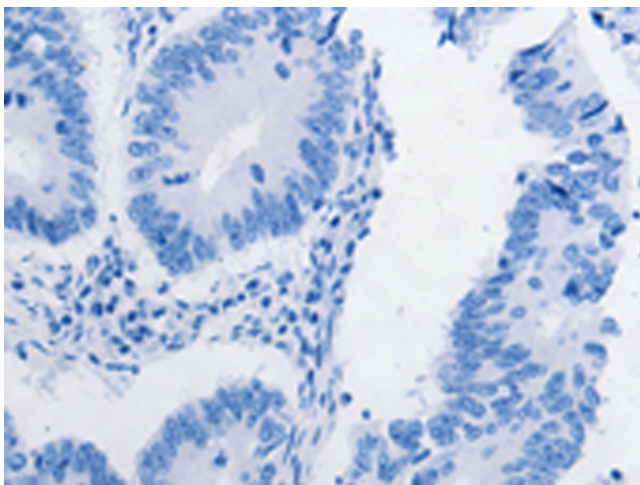
Immunohistochemistry of paraffin-embedded Human esophagus cancer tissue using TA322732 (LRP2 Antibody) at dilution 1/16 (Original magnification: $\times 200$)



Immunohistochemistry of paraffin-embedded Human esophagus cancer tissue using TA322732 (LRP2 Antibody) at dilution 1/16, treated with synthetic peptide. (Original magnification: $\times 200$)



Immunohistochemistry of paraffin-embedded Human colon cancer tissue using TA322732 (LRP2 Antibody) at dilution 1/16 (Original magnification: $\times 200$)



Immunohistochemistry of paraffin-embedded Human colon cancer tissue using TA322732 (LRP2 Antibody) at dilution 1/16, treated with synthetic peptide. (Original magnification: $\times 200$)