

## Product datasheet for **TA322730**

### **IKB epsilon (NFKBIE) Rabbit Polyclonal Antibody**

#### **Product data:**

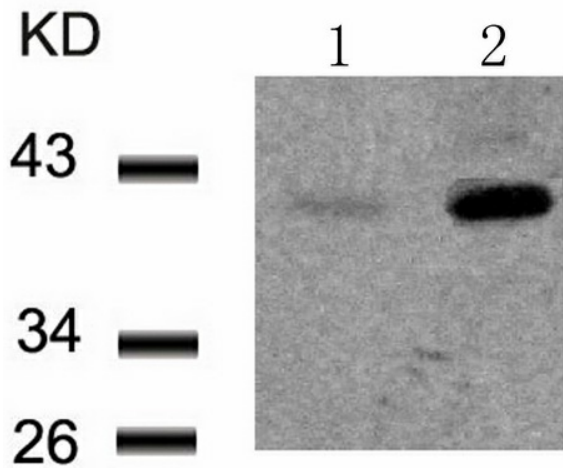
Product Type:	Primary Antibodies
Applications:	IHC, WB
Recommended Dilution:	WB: 1:500-1000, IHC: 1:50-100
Reactivity:	Human, Mouse
Modifications:	Phospho-specific
Host:	Rabbit
Isotype:	IgG
Clonality:	Polyclonal
Immunogen:	Peptide sequence around phosphorylation site of serine 22 (I-E-S(p)-L-R) derived from Human IκB-e.
Formulation:	PBS pH7.3, 0.05% NaN <sub>3</sub> , 50% glycerol
Concentration:	lot specific
Purification:	Antigen affinity purification
Conjugation:	Unconjugated
Storage:	Store at -20°C as received.
Stability:	Stable for 12 months from date of receipt.
Predicted Protein Size:	40 kDa
Gene Name:	NFKB inhibitor epsilon
Database Link:	<a href="#">NP_004547</a> <a href="#">Entrez Gene 18037 Mouse</a> <a href="#">Entrez Gene 4794 Human</a> <a href="#">O00221</a>
Background:	The protein encoded by this gene binds to components of NF-kappa-B, trapping the complex in the cytoplasm and preventing it from activating genes in the nucleus. Phosphorylation of the encoded protein targets it for destruction by the ubiquitin pathway, which activates NF-kappa-B by making it available to translocate to the nucleus.
Synonyms:	IKBE
Protein Families:	Druggable Genome, Transcription Factors



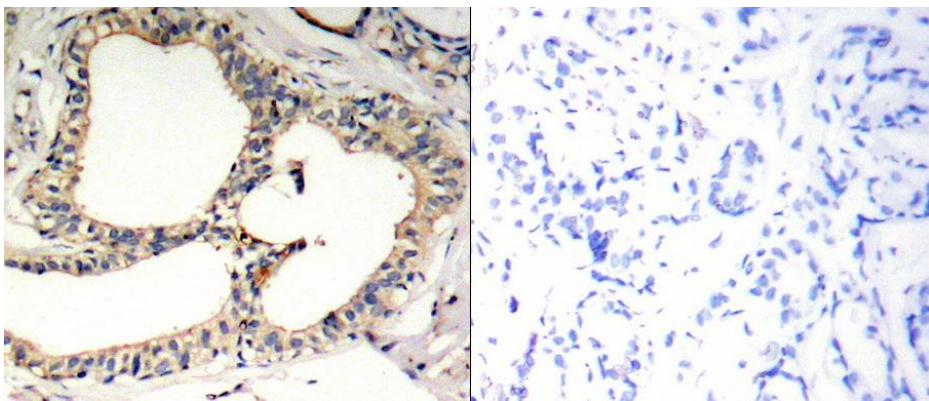
[View online »](#)

**Protein Pathways:** Adipocytokine signaling pathway, B cell receptor signaling pathway, Neurotrophin signaling pathway, T cell receptor signaling pathway

**Product images:**



Predicted band size: 40 kDa. Positive control: 293 cells treated with TNF lysate. Recommended dilution: 1/ 500-1000. (Gel: 10%SDS-PAGE Lane 1: 293 cells untreated with TNF lysate Lane 2: 293 cells treated with TNF lysate Lysates: 30 ug per lane Primary antibody: 1/500 dilution Secondary antibody: Goat an ti Rabbit IgG - H&L (HRP) at 1/10000 dilution Exposure time: 1 minute)



Predicted cell location: Cytoplasm. Positive control: Human breast carcinoma tissue. Recommended dilution: 1/ 50-100 The image on the left is immunohistochemistry of paraffin-embedded human breast carcinoma tissue using NFKBIE (Phospho-Ser22) antibody at dilution 1/50, on the right is treated with the synthetic peptide. (Original magnification:x200)