

Product datasheet for **TA322728**

IKB epsilon (NFKBIE) Rabbit Polyclonal Antibody

Product data:

Product Type:	Primary Antibodies
Applications:	IHC, WB
Recommended Dilution:	WB: 200-1000 WB positive control: Raji cells IHC: 50-200 Positive control: Human esophagus cancer Predicted cell location: Cytoplasm
Reactivity:	Human, Mouse
Host:	Rabbit
Isotype:	IgG
Clonality:	Polyclonal
Immunogen:	Fusion protein corresponding to a region derived from 63-423 amino acids of human nuclear factor of kappa light polypeptide gene enhancer in B-cells inhibitor, epsilon
Formulation:	PBS pH7.3, 0.05% NaN ₃ , 50% glycerol
Concentration:	lot specific
Purification:	Antigen affinity purification
Conjugation:	Unconjugated
Storage:	Store at -20°C as received.
Stability:	Stable for 12 months from date of receipt.
Predicted Protein Size:	45 kDa
Gene Name:	NFKB inhibitor epsilon
Database Link:	NP_004547 Entrez Gene 18037 Mouse Entrez Gene 4794 Human O00221



[View online »](#)

Background:

The protein encoded by this gene binds to components of NF-kappa-B; trapping the complex in the cytoplasm and preventing it from activating genes in the nucleus. Phosphorylation of the encoded protein targets it for destruction by the ubiquitin pathway; which activates NF-kappa-B by making it available to translocate to the nucleus. NFKBIE protein expression is up-regulated following NF- κ B activation and during myelopoiesis. NFKBIE is able to inhibit NF- κ B-directed transactivation via cytoplasmic retention of REL proteins. NFKB1 or NFKB2 is bound to REL; RELA; or RELB to form the NF- κ B transcription factor complex. The NF- κ B complex is inhibited by I-kappa-B proteins (NFKBIA or NFKBIB); which inactivate NF-kappa-B by trapping it in the cytoplasm.

Synonyms:

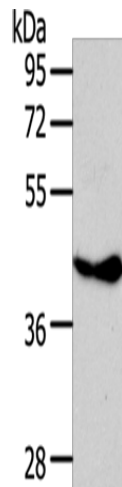
IKBE

Protein Families:

Druggable Genome, Transcription Factors

Protein Pathways:

Adipocytokine signaling pathway, B cell receptor signaling pathway, Neurotrophin signaling pathway, T cell receptor signaling pathway

Product images:

Gel: 10%SDS-PAGE

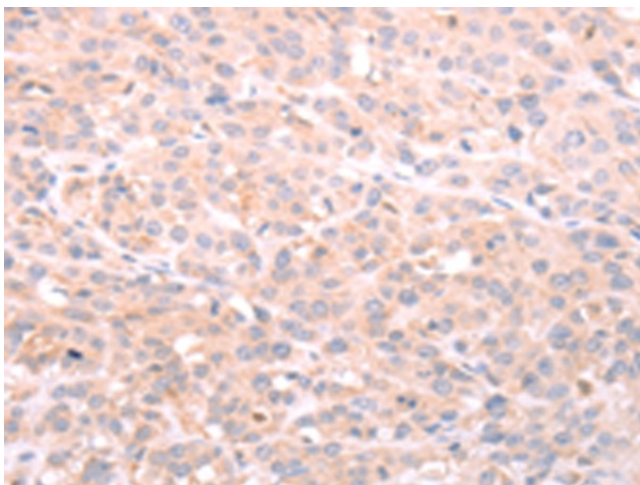
Lysate: 40 μ g

Lane: Raji cells

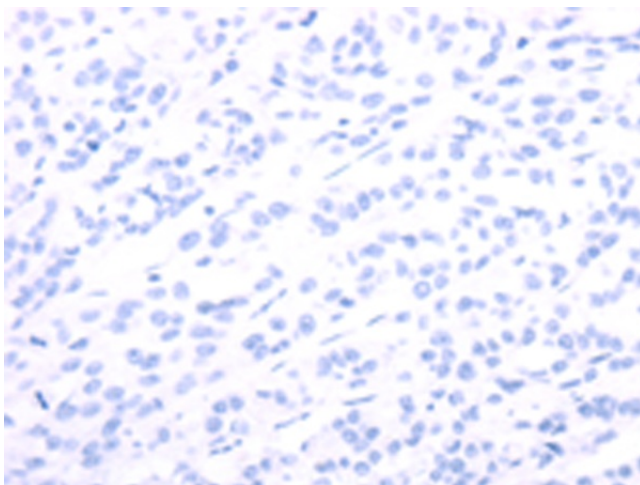
Primary antibody: TA322728 (NFKBIE Antibody) at dilution 1/350

Secondary antibody: Goat anti rabbit IgG at 1/8000 dilution

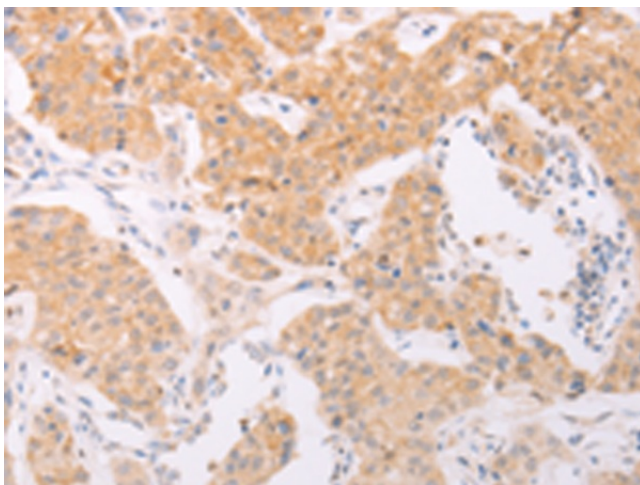
Exposure time: 1 minute



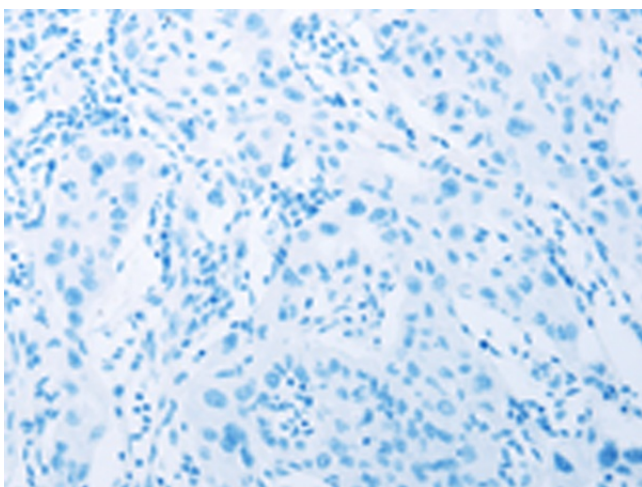
Immunohistochemistry of paraffin-embedded Human esophagus cancer tissue using TA322728 (NFKBIE Antibody) at dilution 1/40 (Original magnification: ×200)



Immunohistochemistry of paraffin-embedded Human esophagus cancer tissue using TA322728 (NFKBIE Antibody) at dilution 1/40, treated with fusion protein. (Original magnification: ×200)



Immunohistochemistry of paraffin-embedded Human lung cancer tissue using TA322728 (NFKBIE Antibody) at dilution 1/40 (Original magnification: ×200)



Immunohistochemistry of paraffin-embedded Human lung cancer tissue using TA322728 (NFKBIE Antibody) at dilution 1/40, treated with fusion protein. (Original magnification: ×200)