

Product datasheet for **TA322727S**

YB1 (YBX1) Rabbit Polyclonal Antibody

Product data:

| | |
|-----------------------|--|
| Product Type: | Primary Antibodies |
| Applications: | IHC |
| Recommended Dilution: | IHC: 25-100 Positive control: Human brain Predicted cell location: Cytoplasm, Nucleus |
| Reactivity: | Human, Mouse, Rat |
| Host: | Rabbit |
| Isotype: | IgG |
| Clonality: | Polyclonal |
| Immunogen: | Synthetic peptide corresponding to a region derived from 310-324 amino acids of human Y box binding protein 1 |
| Formulation: | PBS pH7.3, 0.05% NaN ₃ , 50% glycerol |
| Purification: | Antigen affinity purification |
| Conjugation: | Unconjugated |
| Storage: | Store at -20°C as received. |
| Stability: | Stable for 12 months from date of receipt. |
| Gene Name: | Y-box binding protein 1 |
| Database Link: | NP_004550 Entrez Gene 22608 Mouse Entrez Gene 500538 Rat Entrez Gene 4904 Human P67809 |

Background: This protein mediates pre-mRNA alternative splicing regulation. It binds to splice sites in pre-mRNA and regulates splice site selection and contributes to the regulation of translation by modulating the interaction between the mRNA and eukaryotic initiation factors. It can regulate the transcription of numerous genes. Its transcriptional activity on the multidrug resistance gene MDR1 is enhanced in presence of the APEX1 acetylated form at 'Lys-6' and 'Lys-7'. Binds to promoters that contain a Y-box (5'-CTGATTGGCCAA-3'); such as MDR1 and HLA class II genes. Promotes separation of DNA strands that contain mismatches or are modified by cisplatin. Has endonucleolytic activity and can introduce nicks or breaks into double-stranded DNA (in vitro).

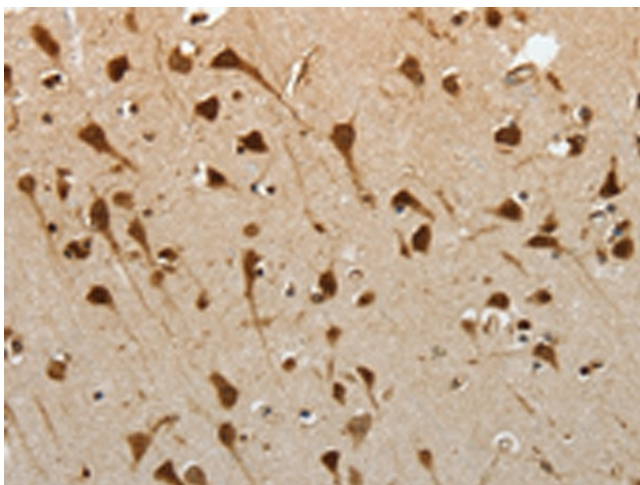


[View online »](#)

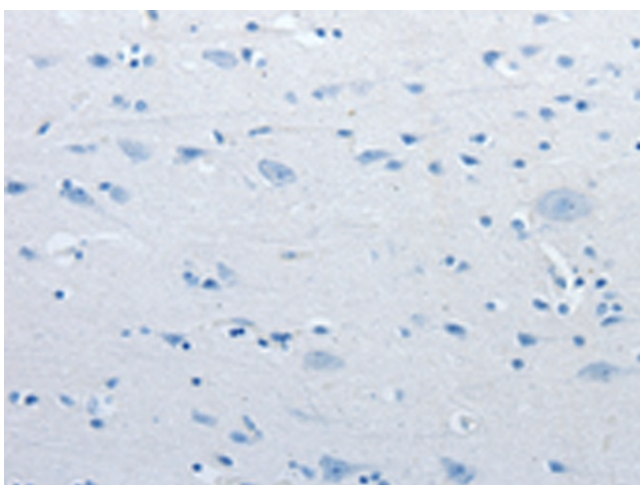
Synonyms: BP-8; CSDA2; CSDB; DBPB; MDR-NF1; NSEP-1; NSEP1; YB-1; YB1

Protein Families: ES Cell Differentiation/IPS, Transcription Factors

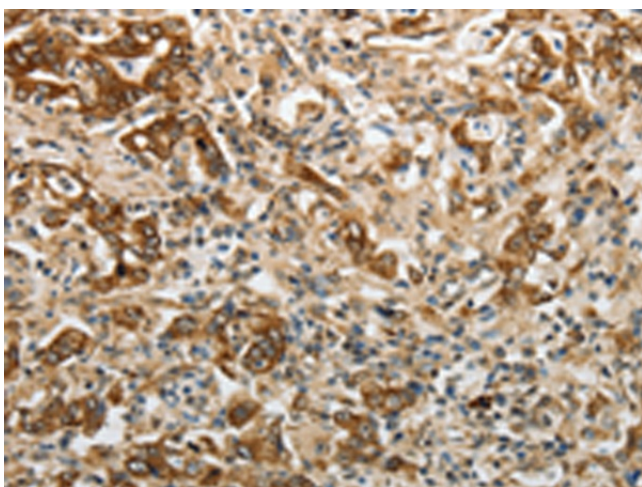
Product images:



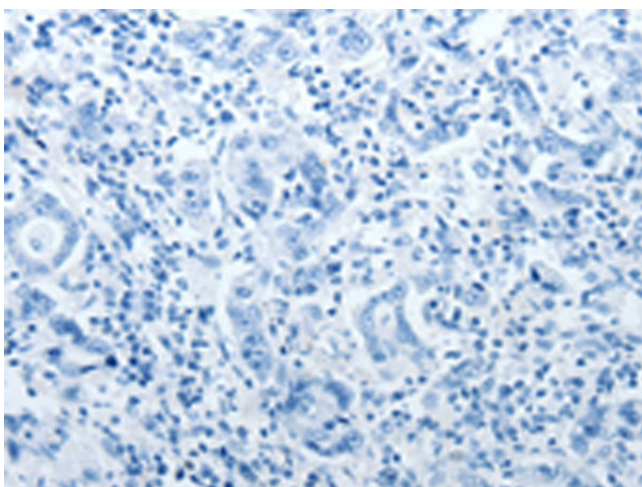
Immunohistochemistry of paraffin-embedded Human brain tissue using [TA322727] (YBX1 Antibody) at dilution 1/15 (Original magnification: $\times 200$)



Immunohistochemistry of paraffin-embedded Human brain tissue using [TA322727] (YBX1 Antibody) at dilution 1/15, treated with synthetic peptide. (Original magnification: $\times 200$)



Immunohistochemistry of paraffin-embedded Human gastric cancer tissue using [TA322727] (YBX1 Antibody) at dilution 1/15 (Original magnification: ×200)



Immunohistochemistry of paraffin-embedded Human gastric cancer tissue using [TA322727] (YBX1 Antibody) at dilution 1/15, treated with synthetic peptide. (Original magnification: ×200)