

## Product datasheet for **TA322726S**

### **YB1 (YBX1) Rabbit Polyclonal Antibody**

#### **Product data:**

Product Type:	Primary Antibodies
Applications:	IHC
Recommended Dilution:	IHC: 25-100 Positive control: Human breast cancer Predicted cell location: Cytoplasm, Nucleus
Reactivity:	Human, Mouse, Rat
Host:	Rabbit
Isotype:	IgG
Clonality:	Polyclonal
Immunogen:	Synthetic peptide corresponding to a region derived from 310-324 amino acids of human Y box binding protein 1
Formulation:	PBS pH7.3, 0.05% NaN <sub>3</sub> , 50% glycerol
Purification:	Antigen affinity purification
Conjugation:	Unconjugated
Storage:	Store at -20°C as received.
Stability:	Stable for 12 months from date of receipt.
Gene Name:	Y-box binding protein 1
Database Link:	<a href="#">NP_004550</a> <a href="#">Entrez Gene 22608 Mouse</a> <a href="#">Entrez Gene 500538 Rat</a> <a href="#">Entrez Gene 4904 Human</a> <a href="#">P67809</a>

**Background:** This protein mediates pre-mRNA alternative splicing regulation. It binds to splice sites in pre-mRNA and regulates splice site selection and contributes to the regulation of translation by modulating the interaction between the mRNA and eukaryotic initiation factors. It can regulate the transcription of numerous genes. Its transcriptional activity on the multidrug resistance gene MDR1 is enhanced in presence of the APEX1 acetylated form at 'Lys-6' and 'Lys-7'. Binds to promoters that contain a Y-box (5'-CTGATTGGCCAA-3'); such as MDR1 and HLA class II genes. Promotes separation of DNA strands that contain mismatches or are modified by cisplatin. Has endonucleolytic activity and can introduce nicks or breaks into double-stranded DNA (in vitro).

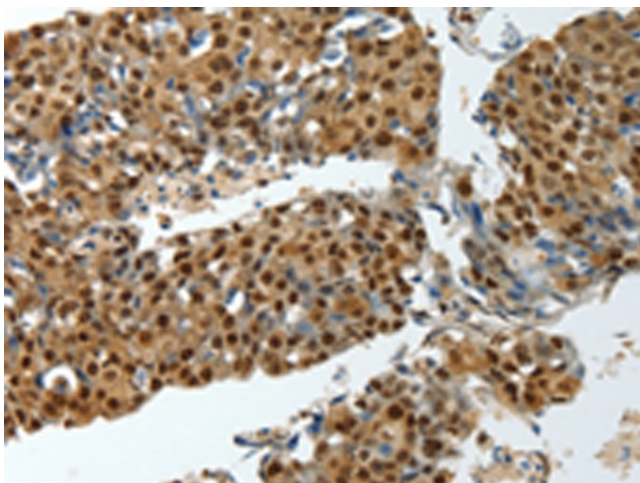


[View online »](#)

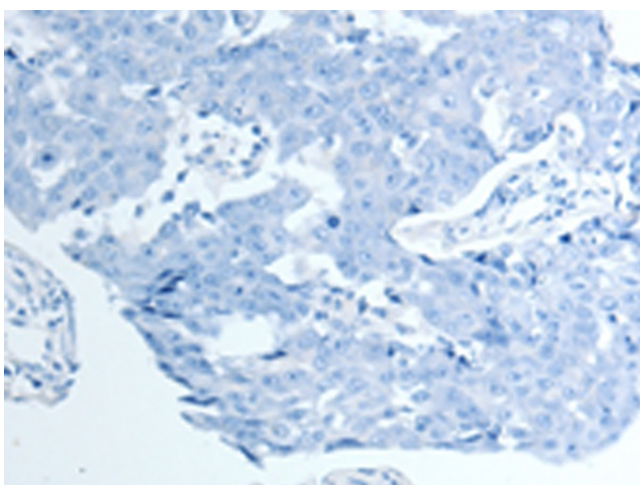
**Synonyms:** BP-8; CSDA2; CSDB; DBPB; MDR-NF1; NSEP-1; NSEP1; YB-1; YB1

**Protein Families:** ES Cell Differentiation/IPS, Transcription Factors

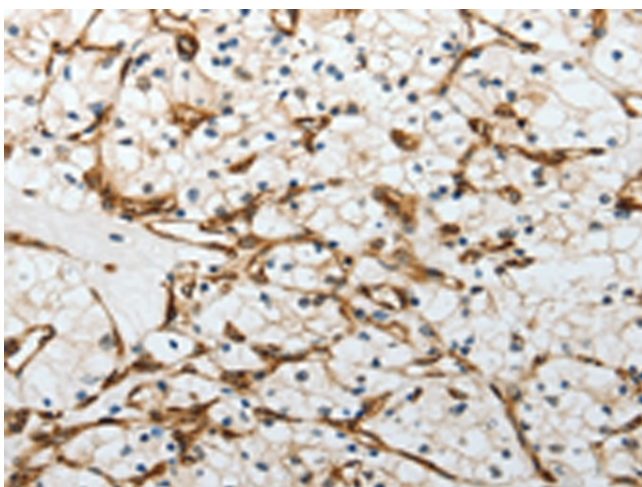
**Product images:**



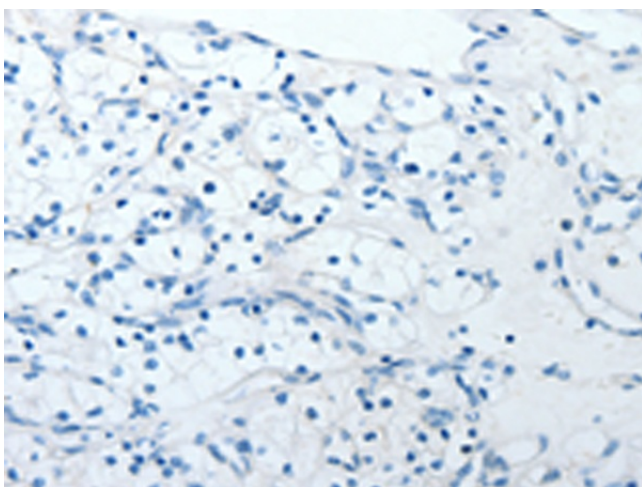
Immunohistochemistry of paraffin-embedded Human breast cancer tissue using [TA322726] (YBX1 Antibody) at dilution 1/15 (Original magnification:  $\times 200$ )



Immunohistochemistry of paraffin-embedded Human breast cancer tissue using [TA322726] (YBX1 Antibody) at dilution 1/15, treated with synthetic peptide. (Original magnification:  $\times 200$ )



Immunohistochemistry of paraffin-embedded Human renal cancer tissue using [TA322726] (YBX1 Antibody) at dilution 1/15 (Original magnification:  $\times 200$ )



Immunohistochemistry of paraffin-embedded Human renal cancer tissue using [TA322726] (YBX1 Antibody) at dilution 1/15, treated with synthetic peptide. (Original magnification:  $\times 200$ )