

Product datasheet for **TA322725**

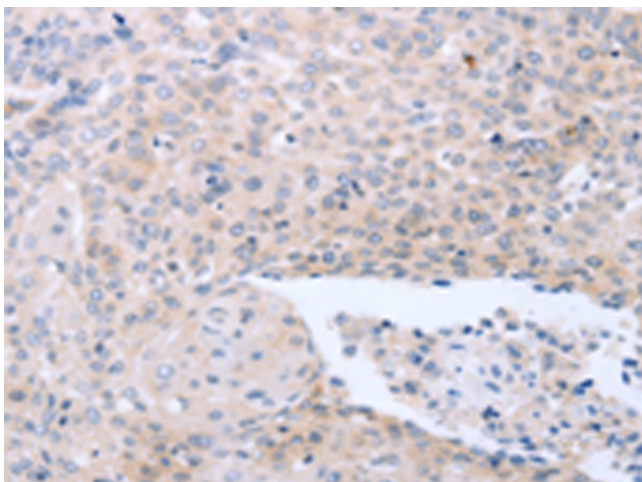
Neurturin (NRTN) Rabbit Polyclonal Antibody

Product data:

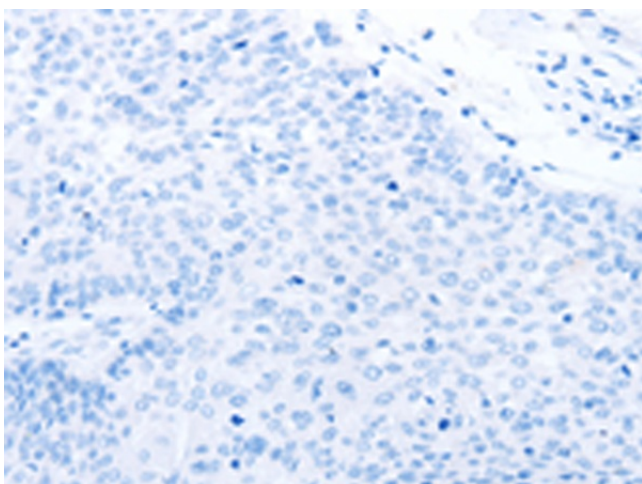
Product Type:	Primary Antibodies
Applications:	IHC
Recommended Dilution:	IHC: 25-100 Positive control: Human ovarian cancer Predicted cell location: Cytoplasm
Reactivity:	Human, Mouse
Host:	Rabbit
Isotype:	IgG
Clonality:	Polyclonal
Immunogen:	Synthetic peptide corresponding to a region derived from 178-193 amino acids of human neurturin
Formulation:	PBS pH7.3, 0.05% NaN ₃ , 50% glycerol
Concentration:	lot specific
Purification:	Antigen affinity purification
Conjugation:	Unconjugated
Storage:	Store at -20°C as received.
Stability:	Stable for 12 months from date of receipt.
Gene Name:	neurturin
Database Link:	NP_004549 Entrez Gene 18188 Mouse Entrez Gene 4902 Human Q99748
Background:	Neurturin is a member of the TGF-beta subfamily; TRN. This gene signals through RET and a GPI-linked coreceptor; and promotes survival of neuronal populations. A neurturin mutation has been described in a family with Hirschsprung Disease.
Synonyms:	NTN
Protein Families:	Druggable Genome, Secreted Protein



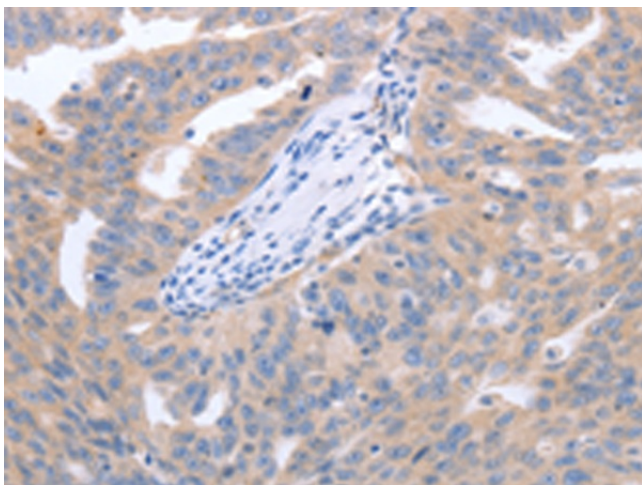
[View online »](#)

Product images:

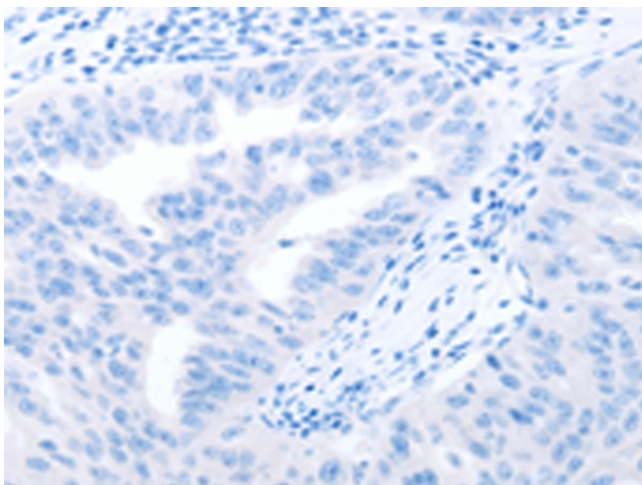
Immunohistochemistry of paraffin-embedded Human ovarian cancer tissue using TA322725 (NRTN Antibody) at dilution 1/40 (Original magnification: $\times 200$)



Immunohistochemistry of paraffin-embedded Human ovarian cancer tissue using TA322725 (NRTN Antibody) at dilution 1/40, treated with synthetic peptide. (Original magnification: $\times 200$)



Immunohistochemistry of paraffin-embedded Human cervical cancer tissue using TA322725 (NRTN Antibody) at dilution 1/40 (Original magnification: $\times 200$)



Immunohistochemistry of paraffin-embedded Human cervical cancer tissue using TA322725 (NRTN Antibody) at dilution 1/40, treated with synthetic peptide. (Original magnification: $\times 200$)