

Product datasheet for **TA322723**

RAB5C Rabbit Polyclonal Antibody

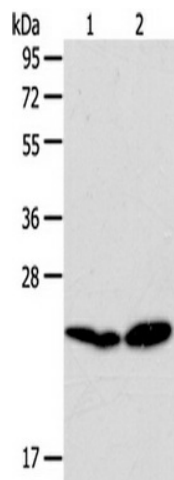
Product data:

Product Type:	Primary Antibodies
Applications:	WB
Recommended Dilution:	ELISA: 1:1000-5000, WB: 1:200-1000
Reactivity:	Human, Mouse, Rat
Host:	Rabbit
Isotype:	IgG
Clonality:	Polyclonal
Immunogen:	Synthetic peptide corresponding to a region derived from 1-17 amino acids of Human Ras-related protein Rab-5C
Formulation:	PBS pH7.3, 0.05% NaN ₃ , 50% glycerol
Concentration:	lot specific
Purification:	Antigen affinity purification
Conjugation:	Unconjugated
Storage:	Store at -20°C as received.
Stability:	Stable for 12 months from date of receipt.
Predicted Protein Size:	24 kDa
Gene Name:	RAB5C, member RAS oncogene family
Database Link:	NP_004574 Entrez Gene 19345 MouseEntrez Gene 287709 RatEntrez Gene 5878 Human P51148
Background:	The protein is a member of the Rab protein family. Members of the Rab protein family are small GTPases of the Ras superfamily that are thought to ensure fidelity in the process of docking and/or fusion of vesicles with their correct acceptor compartment. The function is protein transport; Probably involved in vesicular traffic.
Synonyms:	L1880; RAB5CL; RAB5L; RABL
Protein Families:	Druggable Genome
Protein Pathways:	Endocytosis



[View online »](#)

Product images:



Gel: 10%SDS-PAGE, Lysate: 40 ug, Lane 1-2: A549 cells, Lovo cells, Primary antibody: RAB5C Antibody at dilution 1/100 dilution, Secondary antibody: Goat anti rabbit IgG at 1/8000 dilution, Exposure time: 30 seconds