

## Product datasheet for **TA322721S**

### Syntaxin 1a (STX1A) Rabbit Polyclonal Antibody

#### Product data:

Product Type:	Primary Antibodies
Applications:	IHC, WB
Recommended Dilution:	WB: 500-2000 WB positive control: Mouse brain tissue IHC: 15-50 Positive control: Human esophagus cancer Predicted cell location: Cytoplasm
Reactivity:	Human, Mouse, Rat
Host:	Rabbit
Isotype:	IgG
Clonality:	Polyclonal
Immunogen:	Synthetic peptide corresponding to a region derived from 1-15 amino acids of human syntaxin 1A (brain)
Formulation:	PBS pH7.3, 0.05% NaN <sub>3</sub> , 50% glycerol
Purification:	Antigen affinity purification
Conjugation:	Unconjugated
Storage:	Store at -20°C as received.
Stability:	Stable for 12 months from date of receipt.
Predicted Protein Size:	33 kDa
Gene Name:	syntaxin 1A
Database Link:	<a href="#">NP_004594</a> <a href="#">Entrez Gene 20907 Mouse</a> <a href="#">Entrez Gene 116470 Rat</a> <a href="#">Entrez Gene 6804 Human</a> <a href="#">Q16623</a>



[View online »](#)

**Background:**

This gene encodes a member of the syntaxin superfamily. Syntaxins are nervous system-specific proteins implicated in the docking of synaptic vesicles with the presynaptic plasma membrane. Syntaxins possess a single C-terminal transmembrane domain; a SNARE [Soluble NSF (N-ethylmaleimide-sensitive fusion protein)-Attachment protein REceptor] domain (known as H3); and an N-terminal regulatory domain (Habc). Syntaxins bind synaptotagmin in a calcium-dependent fashion and interact with voltage dependent calcium and potassium channels via the C-terminal H3 domain. This gene product is a key molecule in ion channel regulation and synaptic exocytosis. Alternatively spliced transcript variants encoding different isoforms have been found for this gene.

**Synonyms:**

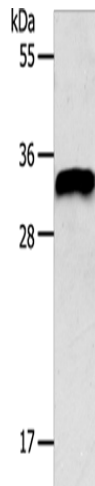
HPC-1; P35-1; STX1; SYN1A

**Protein Families:**

Druggable Genome, Secreted Protein, Transmembrane

**Protein Pathways:**

SNARE interactions in vesicular transport

**Product images:**

Gel: 12%SDS-PAGE

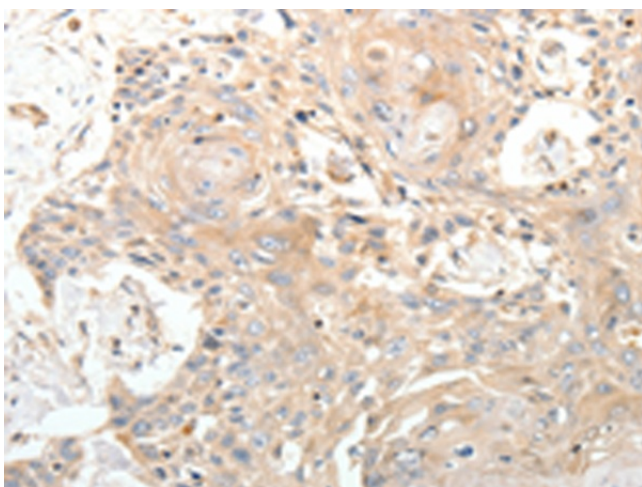
Lysate: 40 µg

Lane: Mouse brain tissue

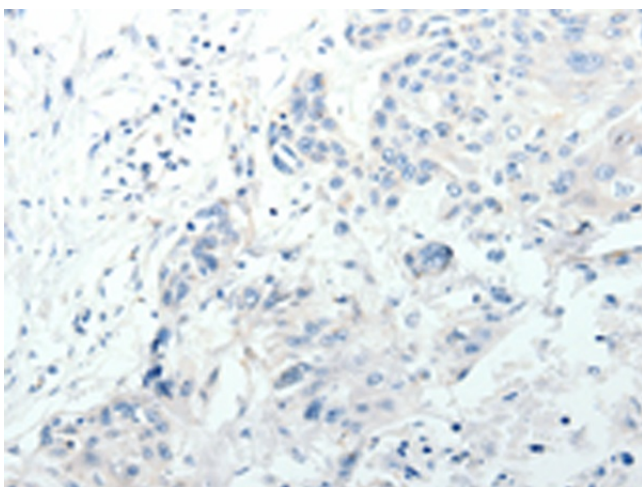
Primary antibody: [TA322721] (STX1A Antibody)  
at dilution 1/350

Secondary antibody: Goat anti rabbit IgG at  
1/8000 dilution

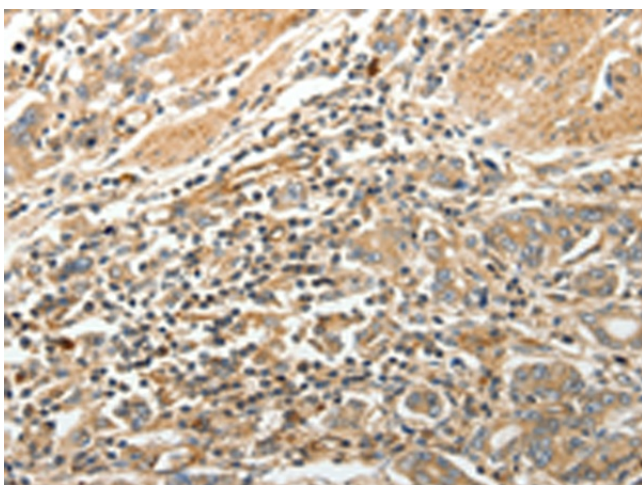
Exposure time: 20 seconds



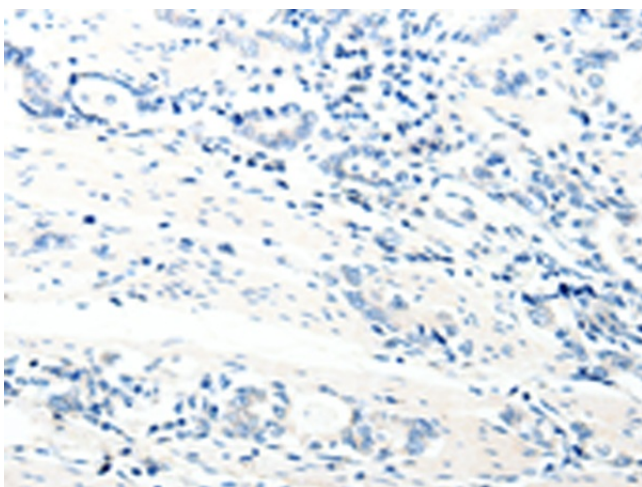
Immunohistochemistry of paraffin-embedded Human esophagus cancer tissue using [TA322721] (STX1A Antibody) at dilution 1/20 (Original magnification:  $\times 200$ )



Immunohistochemistry of paraffin-embedded Human esophagus cancer tissue using [TA322721] (STX1A Antibody) at dilution 1/20, treated with synthetic peptide. (Original magnification:  $\times 200$ )



Immunohistochemistry of paraffin-embedded Human gastric cancer tissue using [TA322721] (STX1A Antibody) at dilution 1/20 (Original magnification:  $\times 200$ )



Immunohistochemistry of paraffin-embedded Human gastric cancer tissue using [TA322721] (STX1A Antibody) at dilution 1/20, treated with synthetic peptide. (Original magnification: ×200)