

## Product datasheet for **TA322720**

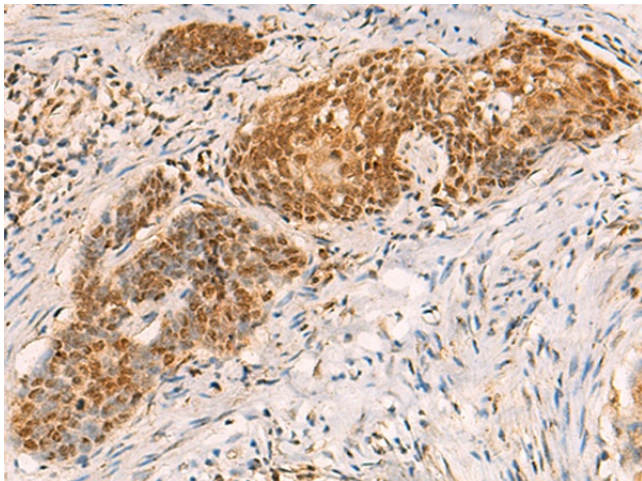
### **SREBP2 (SREBF2) Rabbit Polyclonal Antibody**

#### **Product data:**

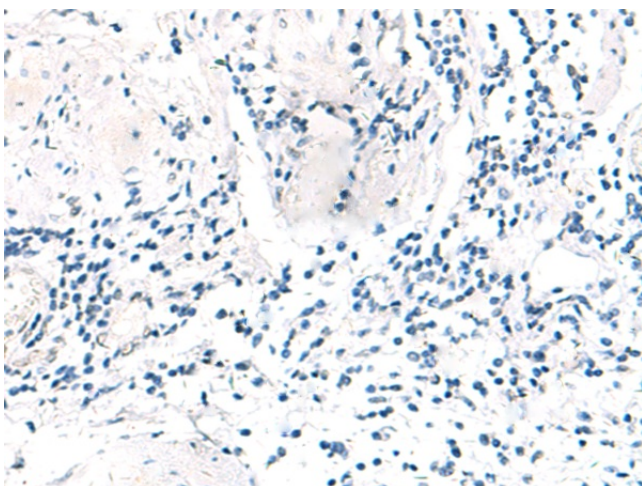
<b>Product Type:</b>	Primary Antibodies
<b>Applications:</b>	IHC
<b>Recommended Dilution:</b>	IHC: 50-300 Positive control: Human esophagus cancer Predicted cell location: Nucleus
<b>Reactivity:</b>	Human, Mouse, Rat
<b>Host:</b>	Rabbit
<b>Isotype:</b>	IgG
<b>Clonality:</b>	Polyclonal
<b>Immunogen:</b>	Synthetic peptide corresponding to a region derived from 407-421 amino acids of human sterol regulatory element binding transcription factor 2
<b>Formulation:</b>	PBS pH7.3, 0.05% NaN <sub>3</sub> , 50% glycerol
<b>Concentration:</b>	lot specific
<b>Purification:</b>	Antigen affinity purification
<b>Conjugation:</b>	Unconjugated
<b>Storage:</b>	Store at -20°C as received.
<b>Stability:</b>	Stable for 12 months from date of receipt.
<b>Gene Name:</b>	sterol regulatory element binding transcription factor 2
<b>Database Link:</b>	<a href="#">NP_004590</a> <a href="#">Entrez Gene 20788 Mouse</a> <a href="#">Entrez Gene 300095 Rat</a> <a href="#">Entrez Gene 6721 Human</a> <a href="#">Q12772</a>
<b>Background:</b>	This gene encodes a ubiquitously expressed transcription factor that controls cholesterol homeostasis by stimulating transcription of sterol-regulated genes. The encoded protein contains a basic helix-loop-helix-leucine zipper (bHLH-Zip) domain.
<b>Synonyms:</b>	bHLHd2; SREBP-2; SREBP2
<b>Protein Families:</b>	Druggable Genome, Transcription Factors



[View online »](#)

**Product images:**

Immunohistochemistry of paraffin-embedded Human esophagus cancer tissue using TA322720 (SREBF2 Antibody) at dilution 1/50 (Original magnification:  $\times 200$ )



Immunohistochemistry of paraffin-embedded Human esophagus cancer tissue using TA322720 (SREBF2 Antibody) at dilution 1/50, treated with synthetic peptide. (Original magnification:  $\times 200$ )