

Product datasheet for **TA322714S**

VNN2 Rabbit Polyclonal Antibody

Product data:

Product Type:	Primary Antibodies
Applications:	WB
Recommended Dilution:	WB: 200-1000 WB positive control: K562 and hela cells
Reactivity:	Human
Host:	Rabbit
Isotype:	IgG
Clonality:	Polyclonal
Immunogen:	Synthetic peptide corresponding to a region derived from 389-401 amino acids of human vanin 2
Formulation:	PBS pH7.3, 0.05% NaN ₃ , 50% glycerol
Purification:	Antigen affinity purification
Conjugation:	Unconjugated
Storage:	Store at -20°C as received.
Stability:	Stable for 12 months from date of receipt.
Predicted Protein Size:	59 kDa
Gene Name:	vanin 2
Database Link:	NP_004656 Entrez Gene 8875 Human O95498



[View online »](#)

Background:

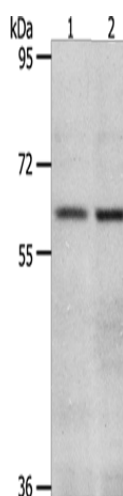
This gene product is a member of the Vanin family of proteins that share extensive sequence similarity with each other; and also with biotinidase. The family includes secreted and membrane-associated proteins; a few of which have been reported to participate in hematopoietic cell trafficking. No biotinidase activity has been demonstrated for any of the vanin proteins; however; they possess pantetheinase activity; which may play a role in oxidative-stress response. The encoded protein is a GPI-anchored cell surface molecule that plays a role in transendothelial migration of neutrophils. This gene lies in close proximity to; and in same transcriptional orientation as two other vanin genes on chromosome 6q23-q24. Alternatively spliced transcript variants encoding different isoforms have been described for this gene.

Synonyms:

FOAP-4; GPI-80

Protein Families:

Druggable Genome, Transmembrane

Product images:

Gel: 8%SDS-PAGE

Lysate: 40 µg

Lane 1-2: K562 cells
hela cellsPrimary antibody: [TA322714] (VNN2 Antibody) at
dilution 1/350Secondary antibody: Goat anti rabbit IgG at
1/8000 dilution

Exposure time: 45 seconds