

## Product datasheet for **TA322711**

### SLC16A4 Rabbit Polyclonal Antibody

#### Product data:

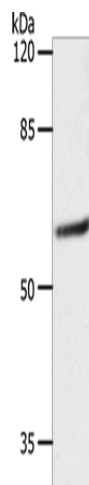
Product Type:	Primary Antibodies
Applications:	WB
Recommended Dilution:	WB: 1000-5000 WB positive control: 231 cells
Reactivity:	Human
Host:	Rabbit
Isotype:	IgG
Clonality:	Polyclonal
Immunogen:	Synthetic peptide corresponding to a region derived from 1-14 amino acids of human solute carrier family 16, member 4 (monocarboxylic acid transporter 5)
Formulation:	PBS pH7.3, 0.05% NaN <sub>3</sub> , 50% glycerol
Concentration:	lot specific
Purification:	Antigen affinity purification
Conjugation:	Unconjugated
Storage:	Store at -20°C as received.
Stability:	Stable for 12 months from date of receipt.
Predicted Protein Size:	54 kDa
Gene Name:	solute carrier family 16 member 4
Database Link:	<a href="#">NP_004687</a> <a href="#">Entrez Gene 9122 Human</a> <a href="#">O15374</a>
Background:	Monocarboxylate transporter 5 is a protein that in humans is encoded by the SLC16A4 gene. Proton-linked monocarboxylate transporter. Catalyzes the rapid transport across the plasma membrane of many monocarboxylates such as lactate; pyruvate; branched-chain oxo acids derived from leucine; valine and isoleucine; and the ketone bodies acetoacetate; beta-hydroxybutyrate and acetate.
Synonyms:	MCT4; MCT5



[View online »](#)

Protein Families: Transmembrane

### Product images:



Gel: 10%SDS-PAGE  
Lysate: 40  $\mu$ g  
Lane: 231 cells  
Primary antibody: TA322711 (SLC16A4 Antibody)  
at dilution 1/1200  
Secondary antibody: Goat anti rabbit IgG at  
1/8000 dilution  
Exposure time: 10 seconds