

Product datasheet for **TA322710**

SLC24A1 Rabbit Polyclonal Antibody

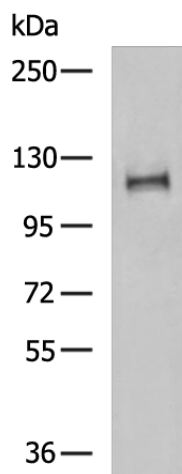
Product data:

Product Type:	Primary Antibodies
Applications:	WB
Recommended Dilution:	WB: 200-1000 WB positive control: Human tonsil tissue lysate
Reactivity:	Human, Rat
Host:	Rabbit
Isotype:	IgG
Clonality:	Polyclonal
Immunogen:	Synthetic peptide corresponding to a region derived from 612-624 amino acids of human solute carrier family 24 (sodium/potassium/calcium exchanger), member 1
Formulation:	PBS pH7.3, 0.05% NaN ₃ , 50% glycerol
Concentration:	lot specific
Purification:	Antigen affinity purification
Conjugation:	Unconjugated
Storage:	Store at -20°C as received.
Stability:	Stable for 12 months from date of receipt.
Predicted Protein Size:	121 kDa
Gene Name:	solute carrier family 24 member 1
Database Link:	NP_004718 Entrez Gene 56814 Rat Entrez Gene 9187 Human O60721
Background:	This gene encodes a member of the potassium-dependent sodium/calcium exchanger protein family. The encoded protein plays an important role in sodium/calcium exchange in retinal rod and cone photoreceptors by mediating the extrusion of one calcium ion and one potassium ion in exchange for four sodium ions. Mutations in this gene may play a role in congenital stationary night blindness. Alternatively spliced transcript variants encoding multiple isoforms have been observed for this gene.
Synonyms:	CSNB1D; HsT17412; NCKX; NCKX1; RODX


[View online »](#)

Protein Families: Druggable Genome, Transmembrane

Product images:



Gel: 6%SDS-PAGE
 Lysate: 40 µg
 Lane: Human tonsil tissue lysate
 Primary antibody: TA322710 (SLC24A1 Antibody)
 at dilution 1/200
 Secondary antibody: Goat anti rabbit IgG at
 1/5000 dilution
 Exposure time: 10 minutes