

## Product datasheet for **TA322709**

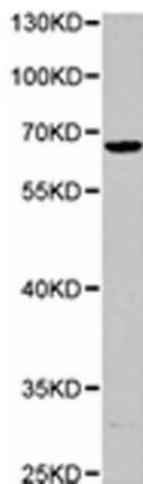
### NUMBL Rabbit Polyclonal Antibody

#### Product data:

Product Type:	Primary Antibodies
Applications:	WB
Recommended Dilution:	WB: 1:500-2000
Reactivity:	Human, Mouse, Rat
Host:	Rabbit
Isotype:	IgG
Clonality:	Polyclonal
Immunogen:	Fusion protein corresponding to C terminal 280 amino acids of human numb homolog (Drosophila)-like
Formulation:	PBS pH7.3, 0.05% NaN <sub>3</sub> , 50% glycerol
Concentration:	lot specific
Purification:	Antigen affinity purification
Conjugation:	Unconjugated
Storage:	Store at -20°C as received.
Stability:	Stable for 12 months from date of receipt.
Predicted Protein Size:	65 kDa
Gene Name:	NUMB like, endocytic adaptor protein
Database Link:	<a href="#">NP_004747</a> <a href="#">Entrez Gene 18223 MouseEntrez Gene 292732 RatEntrez Gene 9253 Human Q9Y6R0</a>
Background:	Numb-like (Numb1 or Nbl) binds Notch and is an intracellular modulator of Notch signaling pathway. Numb1 contains a phosphotyrosine binding (PTB) domain that could bind the Y682 motif present in the cytoplasmic tail of APP. Deduced molecular weight of Numb1 is 72 kDa.
Synonyms:	CAG3A; CTG3a; NBL; NUMB-R; NUMBLIKE; NUMBR; TNRC23
Protein Pathways:	Notch signaling pathway



[View online »](#)

**Product images:**

Predicted band size: 65 kDa. Positive control: Kidney tissue lysate. Recommended dilution: 1/500-2000. (Gel: 8%SDS-PAGE Lysate: 40 ug Primary antibody: 1/500 dilution Secondary antibody: Goat anti Rabbit IgG - H&L (HRP) at 1/10000 dilution Exposure time: 1 minute)