

## Product datasheet for **TA322708**

### MSK1 (RPS6KA5) Rabbit Polyclonal Antibody

#### Product data:

|                         |   |
|-------------------------|---|
| Product Type:           | Primary Antibodies  |
| Applications:           | WB  |
| Recommended Dilution:   | WB: 1:500-1000  |
| Reactivity:             | Human, Mouse, Rat   |
| Host:                   | Rabbit  |
| Isotype:                | IgG   |
| Clonality:              | Polyclonal  |
| Immunogen:              | Peptide sequence around aa.374~378 (G-Y-S-F-V) derived from Human MSK1.   |
| Formulation:            | PBS pH7.3, 0.05% NaN <sub>3</sub> , 50% glycerol  |
| Concentration:          | lot specific  |
| Purification:           | Antigen affinity purification   |
| Conjugation:            | Unconjugated  |
| Storage:                | Store at -20°C as received.   |
| Stability:              | Stable for 12 months from date of receipt.  |
| Predicted Protein Size: | 90 kDa  |
| Gene Name:              | ribosomal protein S6 kinase A5  |
| Database Link:          | <a href="#">NP_004746</a><br><a href="#">Entrez Gene 73086</a> <a href="#">MouseEntrez Gene 314384</a> <a href="#">RatEntrez Gene 9252</a> <a href="#">Human O75582</a> |

**Background:** Serine/threonine kinase required for the mitogen or stress-induced phosphorylation of the transcription factors CREB (cAMP response element-binding protein) and ATF1 (activating transcription factor-1). Essential role in the control of RELA transcriptional activity in response to TNF. Directly represses transcription via phosphorylation of 'Ser-1' of histone H2A. Phosphorylates 'Ser-10' of histone H3 in response to mitogenics, stress stimuli and epidermal growth-factor (EGF), which results in the transcriptional activation of several immediate early genes, including proto-oncogenes c-fos/FOS and c-jun/JUN. May also phosphorylate 'Ser-28' of histone H3. Mediates the mitogen- and stress-induced phosphorylation of high mobility group protein 14 (HMG-14).



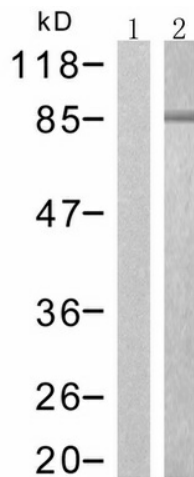
[View online »](#)

**Synonyms:** MSK1; MSPK1; RLPK

**Protein Families:** Druggable Genome, Protein Kinase, Transcription Factors

**Protein Pathways:** Bladder cancer, MAPK signaling pathway, Neurotrophin signaling pathway

**Product images:**



Predicted band size: 90 kDa. Positive control: HUVEC cells lysate. Recommended dilution: 1/500-1000. (Gel: 8%SDS-PAGE Lane 1: Treated with the peptide Lane 2: HUVEC cells lysate Lysates: 30 ug per lane Primary antibody: 1/500 dilution Secondary antibody: Goat anti Rabbit IgG - H&L (HRP) at 1/10000 dilution Exposure time: 1 minute)