

Product datasheet for **TA322702**

ABCG1 Rabbit Polyclonal Antibody

Product data:

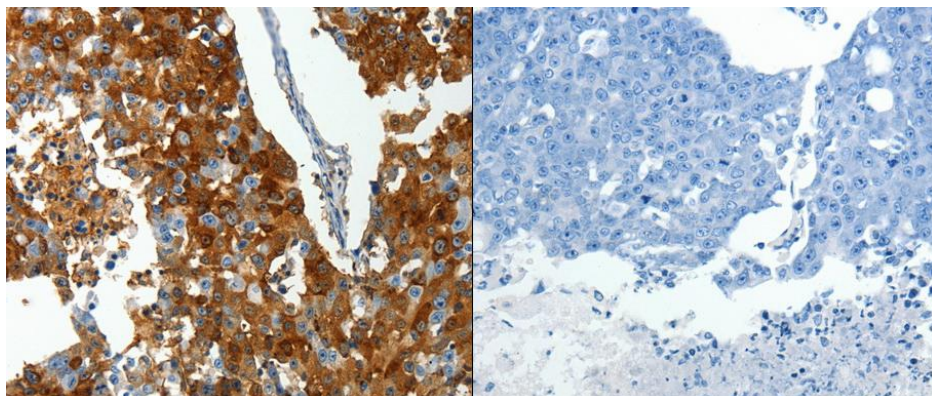
Product Type:	Primary Antibodies
Applications:	IHC
Recommended Dilution:	ELISA: 1:2000-5000, IHC: 1:25-100
Reactivity:	Human, Mouse, Rat
Host:	Rabbit
Isotype:	IgG
Clonality:	Polyclonal
Immunogen:	Synthetic peptide corresponding to a region derived from 349-362 amino acids of human ATP-binding cassette, sub-family G (WHITE), member 1
Formulation:	PBS pH7.3, 0.05% NaN ₃ , 50% glycerol
Concentration:	lot specific
Purification:	Antigen affinity purification
Conjugation:	Unconjugated
Storage:	Store at -20°C as received.
Stability:	Stable for 12 months from date of receipt.
Gene Name:	ATP binding cassette subfamily G member 1
Database Link:	NP_004906 Entrez Gene 11307 Mouse Entrez Gene 85264 Rat Entrez Gene 9619 Human P45844
Background:	The protein encoded by this gene is a member of the superfamily of ATP-binding cassette (ABC) transporters. ABC proteins transport various molecules across extra- and intra-cellular membranes. ABC genes are divided into seven distinct subfamilies (ABC1; MDR/TAP; MRP; ALD; OABP; GCN20; White). This protein is a member of the White subfamily. It is involved in macrophage cholesterol and phospholipids transport; and may regulate cellular lipid homeostasis in other cell types. Six alternative splice variants have been identified.
Synonyms:	ABC8; WHITE1
Protein Families:	Druggable Genome, Transmembrane



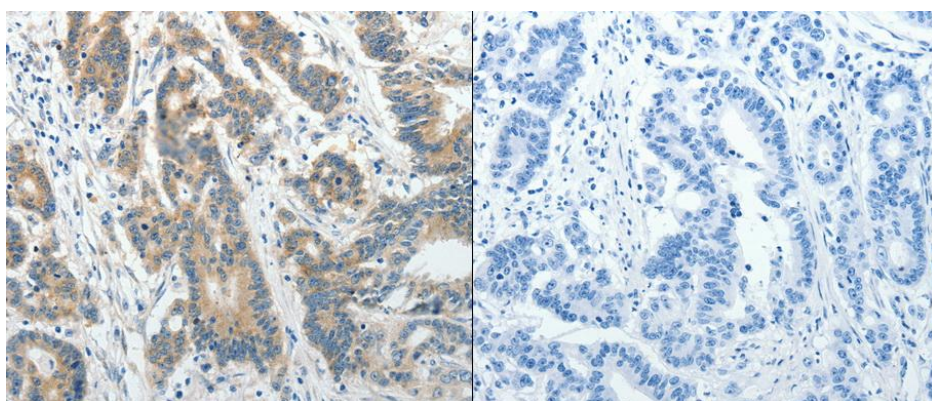
[View online »](#)

Protein Pathways: ABC transporters

Product images:



Predicted cell location: Cytoplasm. Positive control: Human breast and colon cancer tissue. Recommended dilution: 1/25-100 The image on the left is immunohistochemistry of paraffin-embedded human breast cancer tissue using ABCG1 antibody at dilution 1/25, on the right is treated with the synthetic peptide. (Original magnification:x 200)



Predicted cell location: Cytoplasm. Positive control: Human breast and colon cancer tissue. Recommended dilution: 1/25-100 The image on the left is immunohistochemistry of paraffin-embedded human colon cancer tissue using ABCG1 antibody at dilution 1/25, on the right is treated with the synthetic peptide. (Original magnification:x200)