

Product datasheet for **TA322701**

ABCG1 Rabbit Polyclonal Antibody

Product data:

Product Type:	Primary Antibodies
Applications:	IHC, WB
Recommended Dilution:	WB: 500-2000 WB positive control: HT-29 cells IHC: 25-100 Positive control: Human gastric cancer Predicted cell location: Cytoplasm
Reactivity:	Human
Host:	Rabbit
Isotype:	IgG
Clonality:	Polyclonal
Immunogen:	Synthetic peptide corresponding to a region derived from 349-362 amino acids of human ATP-binding cassette, sub-family G (WHITE), member 1
Formulation:	PBS pH7.3, 0.05% NaN ₃ , 50% glycerol
Concentration:	lot specific
Purification:	Antigen affinity purification
Conjugation:	Unconjugated
Storage:	Store at -20°C as received.
Stability:	Stable for 12 months from date of receipt.
Predicted Protein Size:	76 kDa
Gene Name:	ATP binding cassette subfamily G member 1
Database Link:	NP_004906 Entrez Gene 9619 Human P45844



[View online »](#)

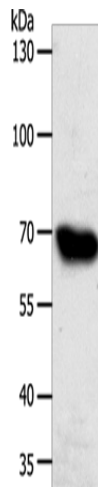
Background: The protein encoded by this gene is a member of the superfamily of ATP-binding cassette (ABC) transporters. ABC proteins transport various molecules across extra- and intra-cellular membranes. ABC genes are divided into seven distinct subfamilies (ABC1; MDR/TAP; MRP; ALD; OABP; GCN20; White). This protein is a member of the White subfamily. It is involved in macrophage cholesterol and phospholipids transport; and may regulate cellular lipid homeostasis in other cell types. Six alternative splice variants have been identified.

Synonyms: ABC8; WHITE1

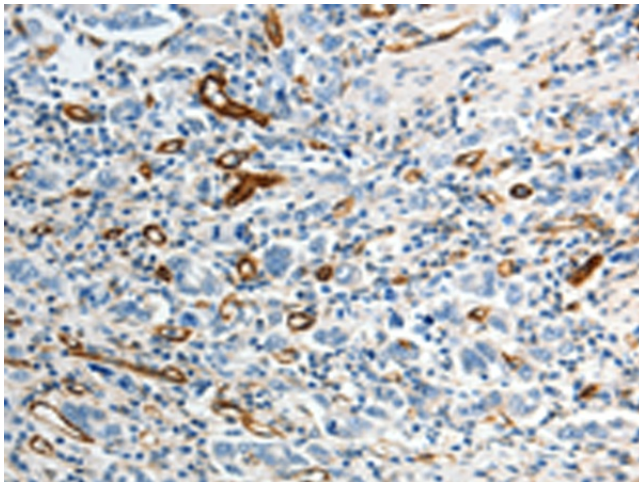
Protein Families: Druggable Genome, Transmembrane

Protein Pathways: ABC transporters

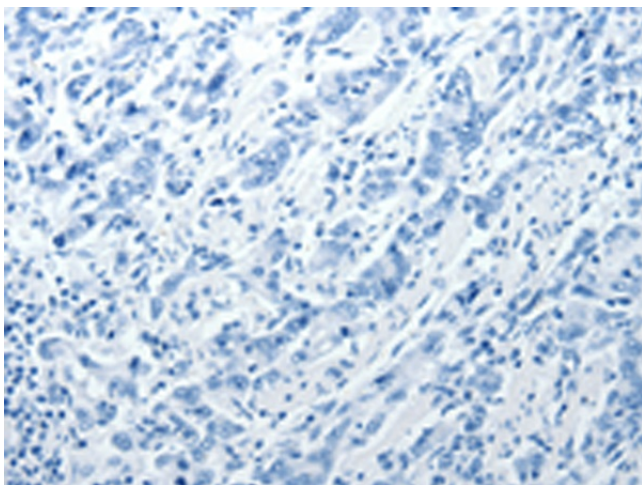
Product images:



Gel: 10%SDS-PAGE
Lysate: 40 μ g
Lane: HT29 cells
Primary antibody: TA322701 (ABCG1 Antibody) at dilution 1/500
Secondary antibody: Goat anti rabbit IgG at 1/8000 dilution
Exposure time: 2 minutes



Immunohistochemistry of paraffin-embedded Human gastric cancer tissue using TA322701 (ABCG1 Antibody) at dilution 1/40 (Original magnification: \times 200)



Immunohistochemistry of paraffin-embedded Human gastric cancer tissue using TA322701 (ABCG1 Antibody) at dilution 1/40, treated with synthetic peptide. (Original magnification: ×200)