

## Product datasheet for **TA322699**

### ROCK2 Rabbit Polyclonal Antibody

#### Product data:

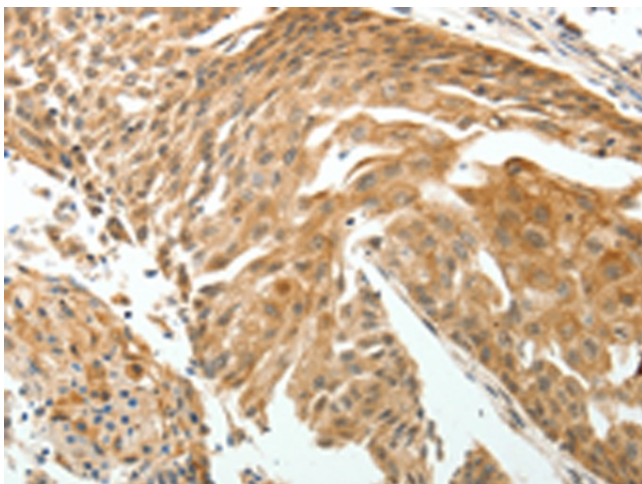
Product Type:	Primary Antibodies
Applications:	IHC
Recommended Dilution:	IHC: 25-100 Positive control: Human cervical cancer Predicted cell location: Cytoplasm, Nucleus
Reactivity:	Human, Mouse, Rat
Host:	Rabbit
Isotype:	IgG
Clonality:	Polyclonal
Immunogen:	Fusion protein corresponding to C terminal 300 amino acids of human Rho-associated, coiled-coil containing protein kinase 2
Formulation:	PBS pH7.3, 0.05% NaN <sub>3</sub> , 50% glycerol
Concentration:	lot specific
Purification:	Antigen affinity purification
Conjugation:	Unconjugated
Storage:	Store at -20°C as received.
Stability:	Stable for 12 months from date of receipt.
Gene Name:	Rho associated coiled-coil containing protein kinase 2
Database Link:	<a href="#">NP_004841</a> <a href="#">Entrez Gene 19878 Mouse</a> <a href="#">Entrez Gene 25537 Rat</a> <a href="#">Entrez Gene 9475 Human</a> <a href="#">O75116</a>



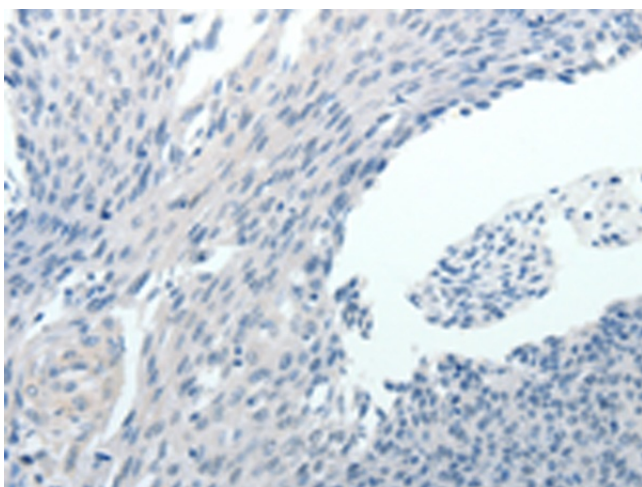
[View online »](#)

- Background:** The protein encoded by this gene is a serine/threonine kinase that regulates cytokinesis; smooth muscle contraction; the formation of actin stress fibers and focal adhesions; and the activation of the c-fos serum response element. This protein; which is an isozyme of ROCK1 is a target for the small GTPase Rho. Protein kinase which is a key regulator of actin cytoskeleton and cell polarity. Involved in regulation of smooth muscle contraction; actin cytoskeleton organization; stress fiber and focal adhesion formation; neurite retraction; cell adhesion and motility via phosphorylation of ADD1; BRCA2; CNN1; EZR; DPYSL2; EP300; MSN; MYL9/MLC2; NPM1; RDX; PPP1R12A and VIM. Phosphorylates SORL1 and IRF4.
- Synonyms:** ROCK-II
- Protein Families:** Druggable Genome, Protein Kinase
- Protein Pathways:** Axon guidance, Chemokine signaling pathway, Focal adhesion, Leukocyte transendothelial migration, Pathogenic Escherichia coli infection, Regulation of actin cytoskeleton, TGF-beta signaling pathway, Vascular smooth muscle contraction, Wnt signaling pathway

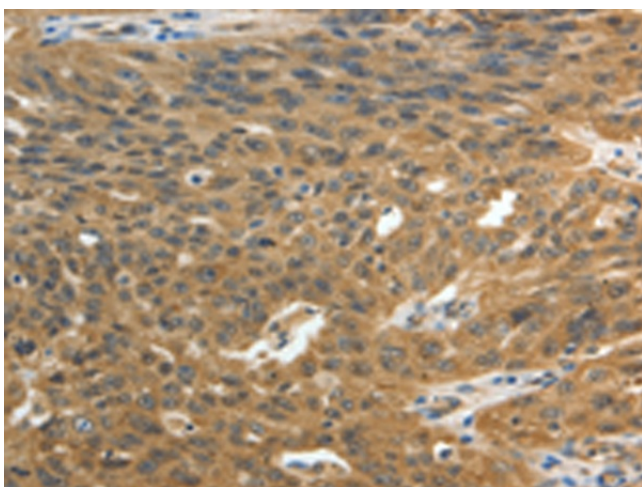
**Product images:**



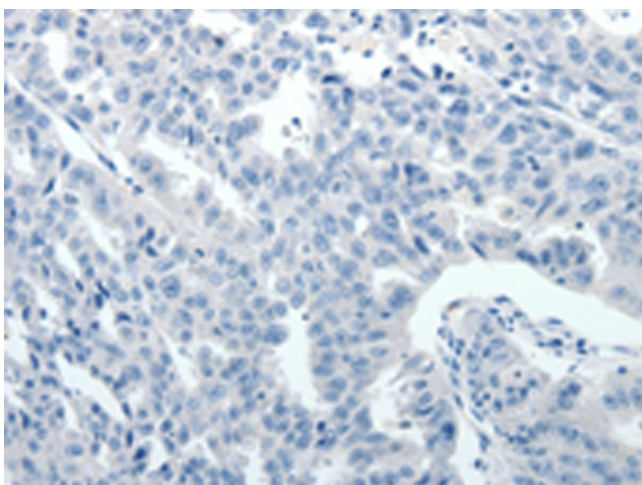
Immunohistochemistry of paraffin-embedded Human cervical cancer tissue using TA322699 (ROCK2 Antibody) at dilution 1/15 (Original magnification:  $\times 200$ )



Immunohistochemistry of paraffin-embedded Human cervical cancer tissue using TA322699 (ROCK2 Antibody) at dilution 1/15, treated with fusion protein. (Original magnification: ×200)



Immunohistochemistry of paraffin-embedded Human ovarian cancer tissue using TA322699 (ROCK2 Antibody) at dilution 1/15 (Original magnification: ×200)



Immunohistochemistry of paraffin-embedded Human ovarian cancer tissue using TA322699 (ROCK2 Antibody) at dilution 1/15, treated with fusion protein. (Original magnification: ×200)