

Product datasheet for **TA322691S**

HDAC1 Rabbit Polyclonal Antibody

Product data:

Product Type:	Primary Antibodies
Applications:	IHC, WB
Recommended Dilution:	WB: 1000-5000 WB positive control: 293T, 231, Jurkat and RAW264.7 cell lysates IHC: 50-200 Positive control: Human esophagus cancer Predicted cell location: Nucleus
Reactivity:	Human, Mouse, Rat
Host:	Rabbit
Isotype:	IgG
Clonality:	Polyclonal
Immunogen:	Fusion protein corresponding to a region derived from 9-300 amino acids of human histone deacetylase 1
Formulation:	PBS pH7.3, 0.05% NaN ₃ , 50% glycerol
Purification:	Antigen affinity purification
Conjugation:	Unconjugated
Storage:	Store at -20°C as received.
Stability:	Stable for 12 months from date of receipt.
Predicted Protein Size:	55 kDa
Gene Name:	histone deacetylase 1
Database Link:	NP_004955 Entrez Gene 297893 Rat Entrez Gene 433759 Mouse Entrez Gene 3065 Human Q13547



[View online »](#)

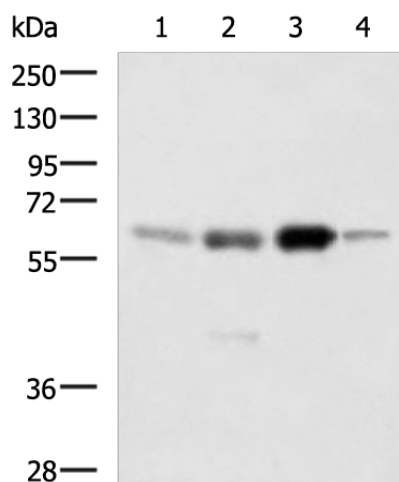
Background: Histone acetylation and deacetylation; catalyzed by multisubunit complexes; play a key role in the regulation of eukaryotic gene expression. The protein encoded by this gene belongs to the histone deacetylase/acuc/apha family and is a component of the histone deacetylase complex. It also interacts with retinoblastoma tumor-suppressor protein and this complex is a key element in the control of cell proliferation and differentiation. Together with metastasis-associated protein-2; it deacetylates p53 and modulates its effect on cell growth and apoptosis.?

Synonyms: GON-10; HD1; RPD3; RPD3L1

Protein Families: Adult stem cells, Druggable Genome, Stem cell - Pluripotency, Stem cell relevant signaling - DSL/Notch pathway, Transcription Factors

Protein Pathways: Cell cycle, Chronic myeloid leukemia, Huntington's disease, Notch signaling pathway, Pathways in cancer

Product images:



Gel: 8%SDS-PAGE

Lysate: 40 µg

Lane 1-4: 293T

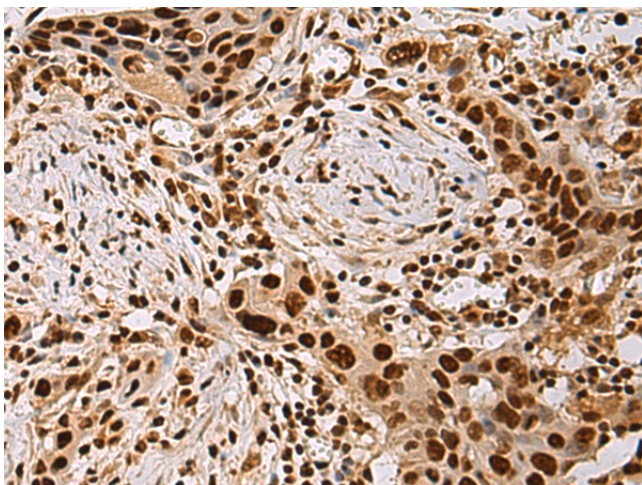
231

Jurkat and RAW264.7 cell lysates

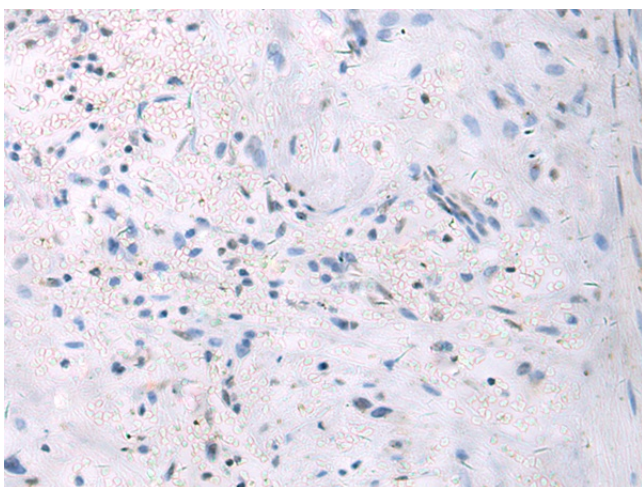
Primary antibody: [TA322691] (HDAC1 Antibody)
at dilution 1/1000

Secondary antibody: Goat anti rabbit IgG at
1/5000 dilution

Exposure time: 1 minute



Immunohistochemistry of paraffin-embedded Human esophagus cancer tissue using [TA322691] (HDAC1 Antibody) at dilution 1/45 (Original magnification: $\times 200$)



Immunohistochemistry of paraffin-embedded Human esophagus cancer tissue using [TA322691] (HDAC1 Antibody) at dilution 1/45, treated with fusion protein. (Original magnification: $\times 200$)