

## Product datasheet for **TA322686**

### KCNC1 Rabbit Polyclonal Antibody

#### Product data:

|                         |   |
|-------------------------|---|
| Product Type:           | Primary Antibodies  |
| Applications:           | IHC, WB   |
| Recommended Dilution:   | WB: 500-2000<br>WB positive control: Mouse liver tissue<br>IHC: 25-100<br>Positive control: Human esophagus cancer<br>Predicted cell location: Cytoplasm, Cell membrane |
| Reactivity:             | Human, Mouse  |
| Host:                   | Rabbit  |
| Isotype:                | IgG   |
| Clonality:              | Polyclonal  |
| Immunogen:              | Synthetic peptide peptide corresponding to a region derived from 499-511 amino acids of human potassium voltage-gated channel, Shaw-related subfamily, member 1         |
| Formulation:            | PBS pH7.3, 0.05% NaN <sub>3</sub> , 50% glycerol  |
| Concentration:          | lot specific  |
| Purification:           | Antigen affinity purification   |
| Conjugation:            | Unconjugated  |
| Storage:                | Store at -20°C as received.   |
| Stability:              | Stable for 12 months from date of receipt.  |
| Predicted Protein Size: | 58 kDa  |
| Gene Name:              | potassium voltage-gated channel subfamily C member 1  |
| Database Link:          | <a href="#">NP_004967</a><br><a href="#">Entrez Gene 16502 Mouse</a> <a href="#">Entrez Gene 3746 Human</a><br><a href="#">P48547</a>                                   |



[View online »](#)

**Background:**

The Shaker gene family of *Drosophila* encodes components of voltage-gated potassium channels and is comprised of four subfamilies. Based on sequence similarity; this gene is similar to one of these subfamilies; namely the Shaw subfamily. The protein encoded by this gene belongs to the delayed rectifier class of channel proteins and is an integral membrane protein that mediates the voltage-dependent potassium ion permeability of excitable membranes. Multiple transcript variants encoding different isoforms have been inferred for this gene based on orthologous loci.

**Synonyms:**

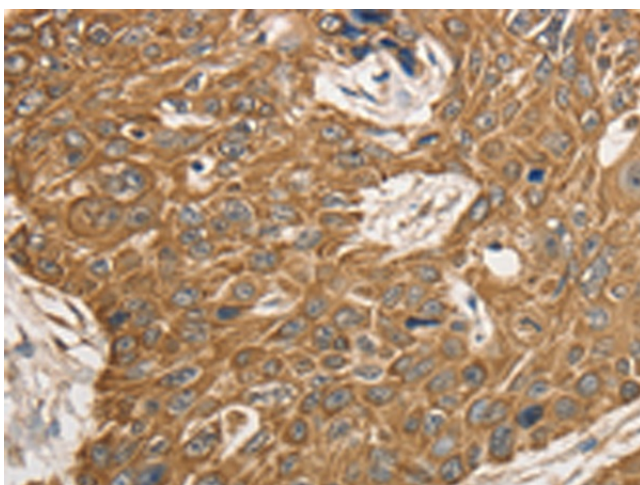
EPM7; KV3.1; KV4; NGK2

**Protein Families:**

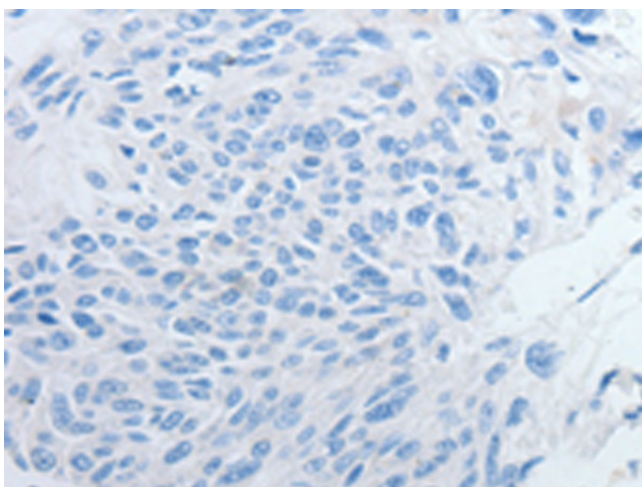
Druggable Genome, Ion Channels: Potassium, Transmembrane

**Product images:**

Gel: 10%SDS-PAGE  
Lysate: 40 µg  
Lane: Mouse liver tissue  
Primary antibody: TA322686 (KCNC1 Antibody) at dilution 1/400  
Secondary antibody: Goat anti rabbit IgG at 1/8000 dilution  
Exposure time: 30 seconds



Immunohistochemistry of paraffin-embedded Human esophagus cancer tissue using TA322686 (KCNC1 Antibody) at dilution 1/20 (Original magnification: ×200)



Immunohistochemistry of paraffin-embedded Human esophagus cancer tissue using TA322686 (KCNC1 Antibody) at dilution 1/20, treated with synthetic peptide. (Original magnification:  $\times 200$ )