

## Product datasheet for **TA322684S**

### MRP1 (ABCC1) Rabbit Polyclonal Antibody

#### Product data:

Product Type:	Primary Antibodies
Applications:	IHC, WB
Recommended Dilution:	WB: 200-1000 WB positive control: HepG2 and LO2 cell IHC: 20-100 Positive control: Human liver cancer Predicted cell location: Cytoplasm and Cell membrane
Reactivity:	Human
Host:	Rabbit
Isotype:	IgG
Clonality:	Polyclonal
Immunogen:	Synthetic peptide corresponding to a region derived from 625-638 amino acids of human ATP-binding cassette, sub-family C (CFTR/MRP), member 1
Formulation:	PBS pH7.3, 0.05% NaN <sub>3</sub> , 50% glycerol
Purification:	Antigen affinity purification
Conjugation:	Unconjugated
Storage:	Store at -20°C as received.
Stability:	Stable for 12 months from date of receipt.
Predicted Protein Size:	173 kDa
Gene Name:	ATP binding cassette subfamily C member 1
Database Link:	<a href="#">NP_004987</a> <a href="#">Entrez Gene 4363 Human</a> <a href="#">P33527</a>



[View online »](#)

**Background:**

The protein encoded by this gene is a member of the superfamily of ATP-binding cassette (ABC) transporters. ABC proteins transport various molecules across extra- and intra-cellular membranes. ABC genes are divided into seven distinct subfamilies (ABC1; MDR/TAP; MRP; ALD; OABP; GCN20; White). This full transporter is a member of the MRP subfamily which is involved in multi-drug resistance. This protein functions as a multispecific organic anion transporter; with oxidized glutathione; cysteinyl leukotrienes; and activated aflatoxin B1 as substrates. This protein also transports glucuronides and sulfate conjugates of steroid hormones and bile salts. Alternatively spliced variants of this gene have been described but their full-length nature is unknown.

**Synonyms:**

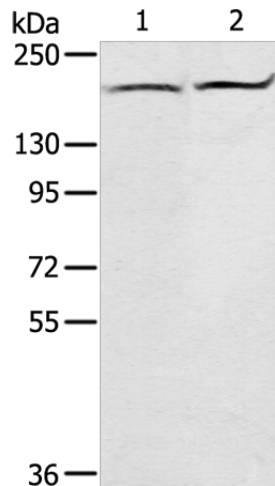
ABC29; ABCC; GS-X; MRP; MRP1

**Protein Families:**

Druggable Genome, Transmembrane

**Protein Pathways:**

ABC transporters

**Product images:**

Gel: 6%SDS-PAGE

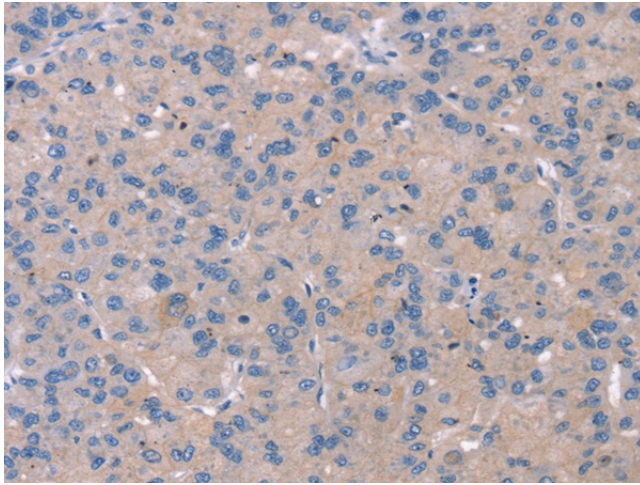
Lysate: 40 µg

Lane 1-2: HepG2 and LO2 cell

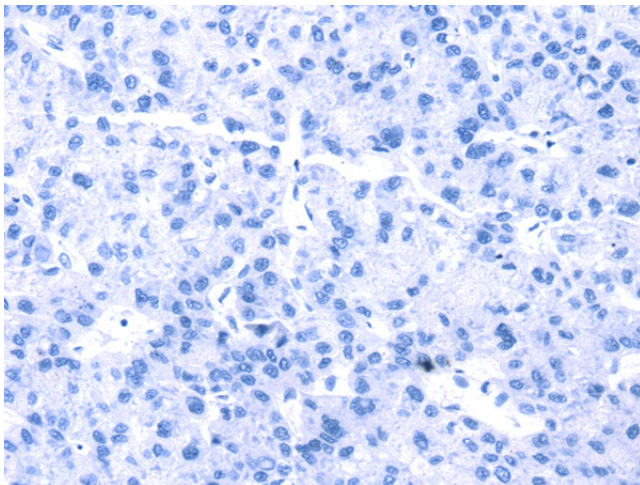
Primary antibody: [TA322684] (ABCC1 Antibody)  
at dilution 1/200

Secondary antibody: Goat anti rabbit IgG at  
1/8000 dilution

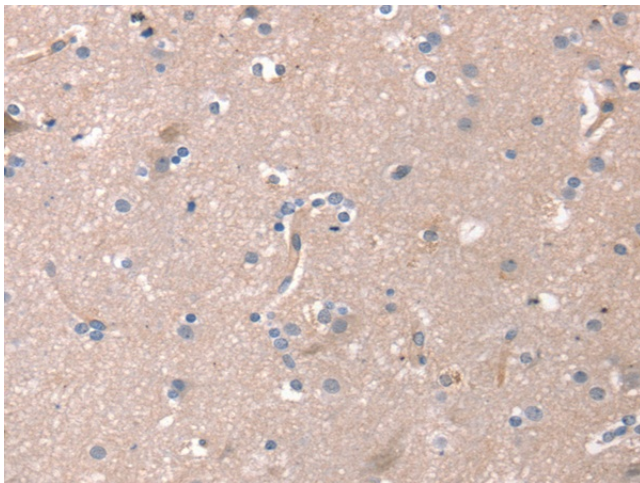
Exposure time: 30 seconds



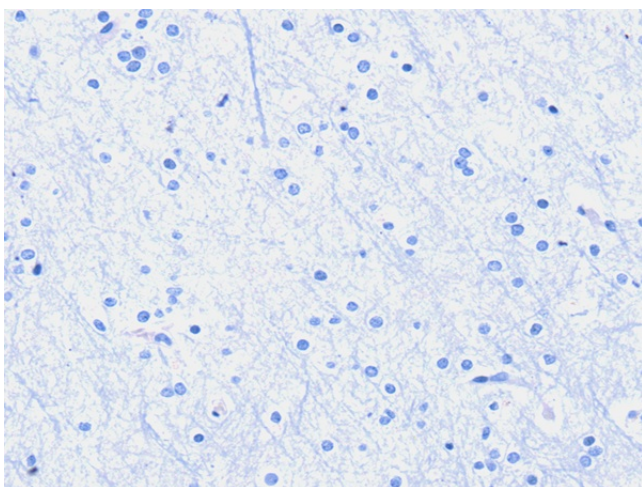
Immunohistochemistry of paraffin-embedded Human liver cancer tissue using [TA322684] (ABCC1 Antibody) at dilution 1/20 (Original magnification: x200)



Immunohistochemistry of paraffin-embedded Human liver cancer tissue using [TA322684] (ABCC1 Antibody) at dilution 1/20, treated with synthetic peptide. (Original magnification: x200)



Immunohistochemistry of paraffin-embedded Human brain tissue using [TA322684] (ABCC1 Antibody) at dilution 1/20 (Original magnification: x200)



Immunohistochemistry of paraffin-embedded Human brain tissue using [TA322684] (ABCC1 Antibody) at dilution 1/20, treated with synthetic peptide. (Original magnification:  $\times 200$ )