

## Product datasheet for **TA322682**

### Profilin 1 (PFN1) Rabbit Polyclonal Antibody

#### Product data:

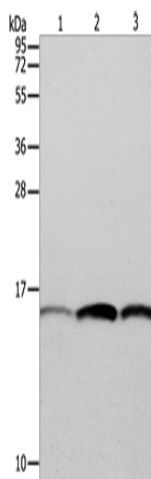
|                         |  |
|-------------------------|--|
| Product Type:           | Primary Antibodies   |
| Applications:           | WB   |
| Recommended Dilution:   | WB: 200-1000<br>WB positive control: Hela, HT-29 and A549 cells  |
| Reactivity:             | Human, Mouse, Rat  |
| Host:                   | Rabbit   |
| Isotype:                | IgG  |
| Clonality:              | Polyclonal   |
| Immunogen:              | Fusion protein corresponding to a region derived from 2-140 amino acids of human profilin 1  |
| Formulation:            | PBS pH7.3, 0.05% NaN <sub>3</sub> , 50% glycerol   |
| Concentration:          | lot specific   |
| Purification:           | Antigen affinity purification  |
| Conjugation:            | Unconjugated   |
| Storage:                | Store at -20°C as received.  |
| Stability:              | Stable for 12 months from date of receipt.   |
| Predicted Protein Size: | 15 kDa   |
| Gene Name:              | profilin 1   |
| Database Link:          | <a href="#">NP_005013</a><br><a href="#">Entrez Gene 18643 Mouse</a> <a href="#">Entrez Gene 64303 Rat</a> <a href="#">Entrez Gene 5216 Human</a><br><a href="#">P07737</a>  |
| Background:             | This gene encodes a member of the profilin family of small actin-binding proteins. The encoded protein plays an important role in actin dynamics by regulating actin polymerization in response to extracellular signals. Deletion of this gene is associated with Miller-Dieker syndrome; and the encoded protein may also play a role in Huntington disease. Multiple pseudogenes of this gene are located on chromosome 1.? |
| Synonyms:               | ALS18  |
| Protein Families:       | Druggable Genome, Stem cell - Pluripotency   |



[View online »](#)

Protein Pathways: Regulation of actin cytoskeleton

### Product images:



Gel: 12%SDS-PAGE

Lysate: 40 µg

Lane 1-3: HeLa cells

HT29 cells

A549 cells

Primary antibody: TA322682 (PFN1 Antibody) at dilution 1/200

Secondary antibody: Goat anti rabbit IgG at 1/8000 dilution

Exposure time: 10 seconds