

## Product datasheet for **TA322681**

### Profilin 1 (PFN1) Rabbit Polyclonal Antibody

#### Product data:

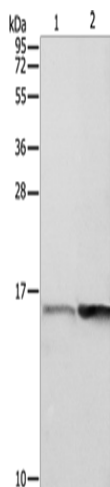
Product Type:	Primary Antibodies
Applications:	WB
Recommended Dilution:	WB: 200-1000 WB positive control: Jurkat and 231 cells
Reactivity:	Human, Mouse, Rat
Host:	Rabbit
Isotype:	IgG
Clonality:	Polyclonal
Immunogen:	Fusion protein corresponding to a region derived from 2-140 amino acids of human profilin 1
Formulation:	PBS pH7.3, 0.05% NaN <sub>3</sub> , 50% glycerol
Concentration:	lot specific
Purification:	Antigen affinity purification
Conjugation:	Unconjugated
Storage:	Store at -20°C as received.
Stability:	Stable for 12 months from date of receipt.
Predicted Protein Size:	15 kDa
Gene Name:	profilin 1
Database Link:	<a href="#">NP_005013</a> <a href="#">Entrez Gene 18643 Mouse</a> <a href="#">Entrez Gene 64303 Rat</a> <a href="#">Entrez Gene 5216 Human</a> <a href="#">P07737</a>
Background:	This gene encodes a member of the profilin family of small actin-binding proteins. The encoded protein plays an important role in actin dynamics by regulating actin polymerization in response to extracellular signals. Deletion of this gene is associated with Miller-Dieker syndrome; and the encoded protein may also play a role in Huntington disease. Multiple pseudogenes of this gene are located on chromosome 1.?
Synonyms:	ALS18
Protein Families:	Druggable Genome, Stem cell - Pluripotency



[View online »](#)

Protein Pathways: Regulation of actin cytoskeleton

### Product images:



Gel: 12%SDS-PAGE

Lysate: 40  $\mu$ g

Lane 1-2: Jurkat cells  
231 cells

Primary antibody: TA322681 (PFN1 Antibody) at  
dilution 1/350

Secondary antibody: Goat anti rabbit IgG at  
1/8000 dilution

Exposure time: 10 seconds