

Product datasheet for **TA322680S**

ENPP3 Rabbit Polyclonal Antibody

Product data:

Product Type:	Primary Antibodies
Applications:	IHC
Recommended Dilution:	IHC: 10-50 Positive control: Human colon cancer Predicted cell location: Cytoplasm
Reactivity:	Human, Mouse, Rat
Host:	Rabbit
Isotype:	IgG
Clonality:	Polyclonal
Immunogen:	Synthetic peptide corresponding to a region derived from 850-864 amino acids of Human ectonucleotide pyrophosphatase/phosphodiesterase 3
Formulation:	PBS pH7.3, 0.05% NaN ₃ , 50% glycerol
Purification:	Antigen affinity purification
Conjugation:	Unconjugated
Storage:	Store at -20°C as received.
Stability:	Stable for 12 months from date of receipt.
Gene Name:	ectonucleotide pyrophosphatase/phosphodiesterase 3
Database Link:	NP_005012 Entrez Gene 54410 Rat Entrez Gene 209558 Mouse Entrez Gene 5169 Human O14638
Background:	The protein encoded by this gene belongs to a series of ectoenzymes that are involved in hydrolysis of extracellular nucleotides. These ectoenzymes possess ATPase and ATP pyrophosphatase activities and are type II transmembrane proteins. Expression of the related rat mRNA has been found in a subset of immature glial cells and in the alimentary tract. The corresponding rat protein has been detected in the pancreas; small intestine; colon; and liver. The human mRNA is expressed in glioma cells; prostate; and uterus. Expression of the human protein has been detected in uterus; basophils; and mast cells.
Synonyms:	B10; CD203c; NPP3; PD-IBETA; PDNP3

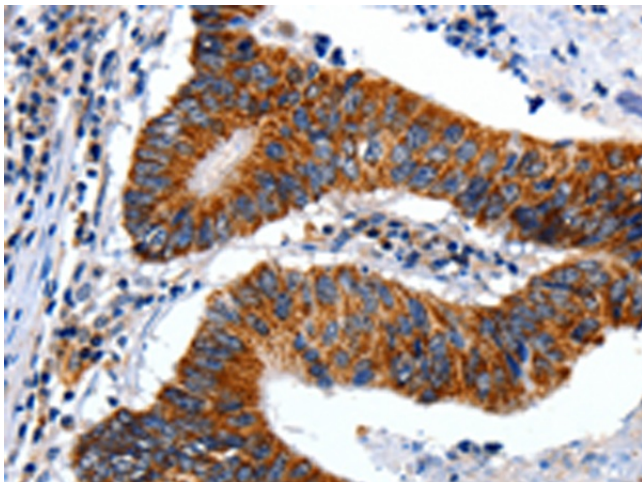


[View online »](#)

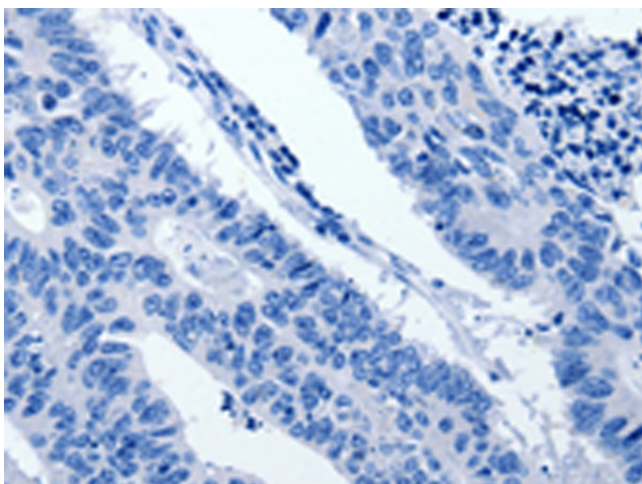
Protein Families: Druggable Genome, Transmembrane

Protein Pathways: Metabolic pathways, Nicotinate and nicotinamide metabolism, Pantothenate and CoA biosynthesis, Purine metabolism, Riboflavin metabolism, Starch and sucrose metabolism

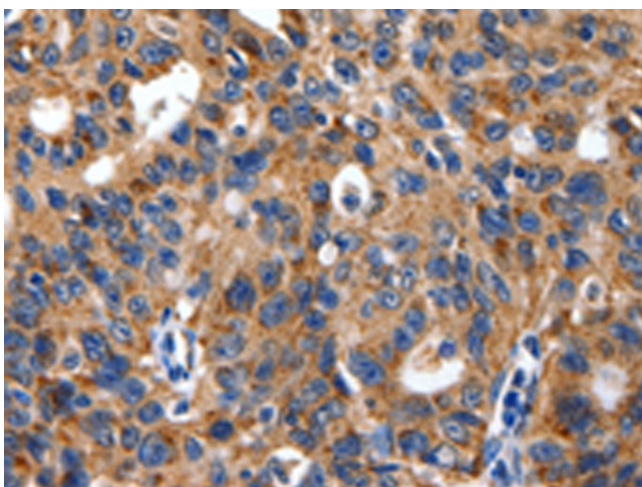
Product images:



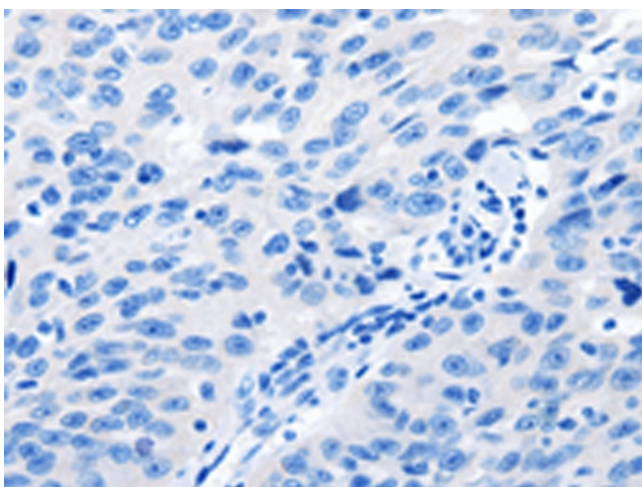
Immunohistochemistry of paraffin-embedded Human colon cancer tissue using [TA322680] (ENPP3 Antibody) at dilution 1/15 (Original magnification: $\times 200$)



Immunohistochemistry of paraffin-embedded Human colon cancer tissue using [TA322680] (ENPP3 Antibody) at dilution 1/15, treated with synthetic peptide. (Original magnification: $\times 200$)



Immunohistochemistry of paraffin-embedded Human ovarian cancer tissue using [TA322680] (ENPP3 Antibody) at dilution 1/15 (Original magnification: ×200)



Immunohistochemistry of paraffin-embedded Human ovarian cancer tissue using [TA322680] (ENPP3 Antibody) at dilution 1/15, treated with synthetic peptide. (Original magnification: ×200)