

## Product datasheet for **TA322678S**

### PRCP Rabbit Polyclonal Antibody

#### Product data:

Product Type:	Primary Antibodies
Applications:	IHC, WB
Recommended Dilution:	WB: 200-1000 WB positive control: SKOV3, A549 cells and human liver cancer tissue IHC: 25-100 Positive control: Human liver cancer Predicted cell location: Cytoplasm
Reactivity:	Human, Mouse
Host:	Rabbit
Isotype:	IgG
Clonality:	Polyclonal
Immunogen:	Fusion protein corresponding to a region derived from 46-317 amino acids of human prolylcarboxypeptidase (angiotensinase C)
Formulation:	PBS pH7.3, 0.05% NaN <sub>3</sub> , 50% glycerol
Purification:	Antigen affinity purification
Conjugation:	Unconjugated
Storage:	Store at -20°C as received.
Stability:	Stable for 12 months from date of receipt.
Predicted Protein Size:	56 kDa
Gene Name:	prolylcarboxypeptidase
Database Link:	<a href="#">NP_005031</a> <a href="#">Entrez Gene 72461 Mouse</a> <a href="#">Entrez Gene 5547 Human</a> <a href="#">P42785</a>



[View online »](#)

**Background:**

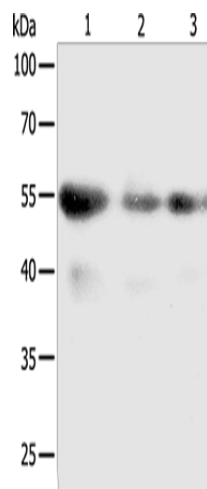
The protein encoded by this gene is a lysosomal prolylcarboxypeptidase; which cleaves C-terminal amino acids linked to proline in peptides such as angiotension II; III and des-Arg9-bradykinin. The cleavage occurs at acidic pH; but the enzyme activity is retained with some substrates at neutral pH. This enzyme has been shown to be an activator of the cell matrix-associated prekallikrein. The importance of angiotension II; one of the substrates of this enzyme; in regulating blood pressure and electrolyte balance suggests that this gene may be related to essential hypertension. Alternatively spliced transcript variants encoding distinct isoforms have been observed.

**Synonyms:**

HUMPCP; PCP

**Protein Families:**

Druggable Genome, Protease, Transmembrane

**Product images:**

Gel: 10%SDS-PAGE

Lysate: 50 µg

Lane 1-3: SKOV3 cells

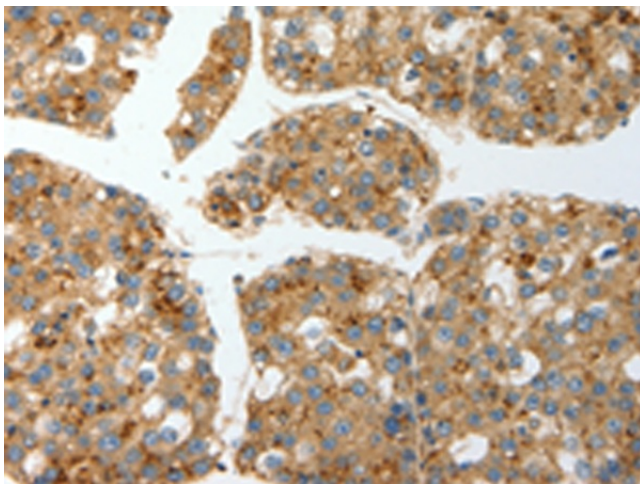
A549 cells

human liver cancer tissue

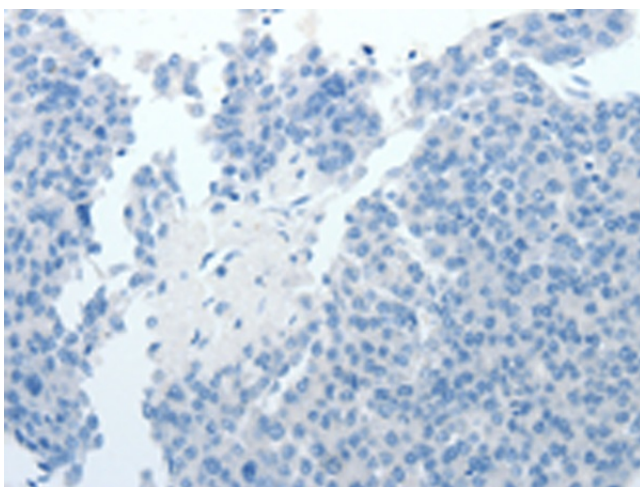
Primary antibody: [TA322678] (PRCP Antibody) at dilution 1/100

Secondary antibody: Goat anti rabbit IgG at 1/8000 dilution

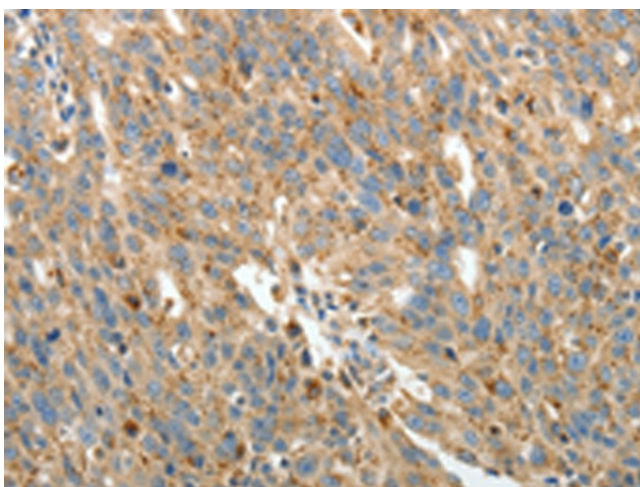
Exposure time: 5 minutes



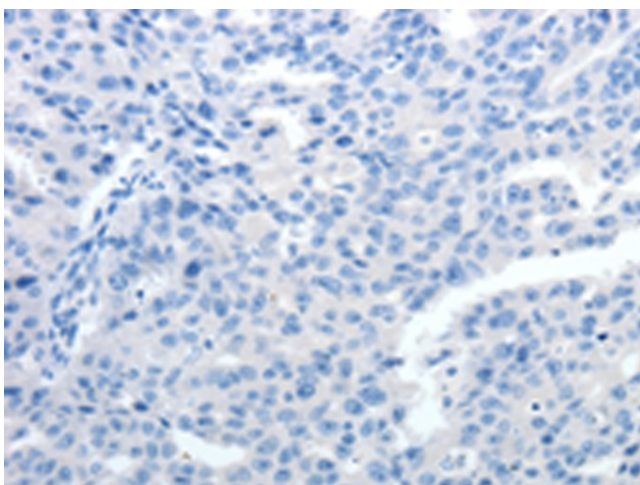
Immunohistochemistry of paraffin-embedded Human liver cancer tissue using [TA322678] (PRCP Antibody) at dilution 1/15 (Original magnification: ×200)



Immunohistochemistry of paraffin-embedded Human liver cancer tissue using [TA322678] (PRCP Antibody) at dilution 1/15, treated with fusion protein. (Original magnification:  $\times 200$ )



Immunohistochemistry of paraffin-embedded Human ovarian cancer tissue using [TA322678] (PRCP Antibody) at dilution 1/15 (Original magnification:  $\times 200$ )



Immunohistochemistry of paraffin-embedded Human ovarian cancer tissue using [TA322678] (PRCP Antibody) at dilution 1/15, treated with fusion protein. (Original magnification:  $\times 200$ )