

Product datasheet for **TA322678**

PRCP Rabbit Polyclonal Antibody

Product data:

Product Type:	Primary Antibodies
Applications:	IHC, WB
Recommended Dilution:	WB: 200-1000 WB positive control: SKOV3, A549 cells and human liver cancer tissue IHC: 25-100 Positive control: Human liver cancer Predicted cell location: Cytoplasm
Reactivity:	Human, Mouse
Host:	Rabbit
Isotype:	IgG
Clonality:	Polyclonal
Immunogen:	Fusion protein corresponding to a region derived from 46-317 amino acids of human prolylcarboxypeptidase (angiotensinase C)
Formulation:	PBS pH7.3, 0.05% NaN ₃ , 50% glycerol
Concentration:	lot specific
Purification:	Antigen affinity purification
Conjugation:	Unconjugated
Storage:	Store at -20°C as received.
Stability:	Stable for 12 months from date of receipt.
Predicted Protein Size:	56 kDa
Gene Name:	prolylcarboxypeptidase
Database Link:	NP_005031 Entrez Gene 72461 Mouse Entrez Gene 5547 Human P42785



[View online »](#)

Background:

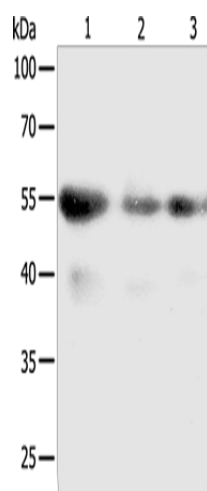
The protein encoded by this gene is a lysosomal prolylcarboxypeptidase; which cleaves C-terminal amino acids linked to proline in peptides such as angiotension II; III and des-Arg9-bradykinin. The cleavage occurs at acidic pH; but the enzyme activity is retained with some substrates at neutral pH. This enzyme has been shown to be an activator of the cell matrix-associated prekallikrein. The importance of angiotension II; one of the substrates of this enzyme; in regulating blood pressure and electrolyte balance suggests that this gene may be related to essential hypertension. Alternatively spliced transcript variants encoding distinct isoforms have been observed.

Synonyms:

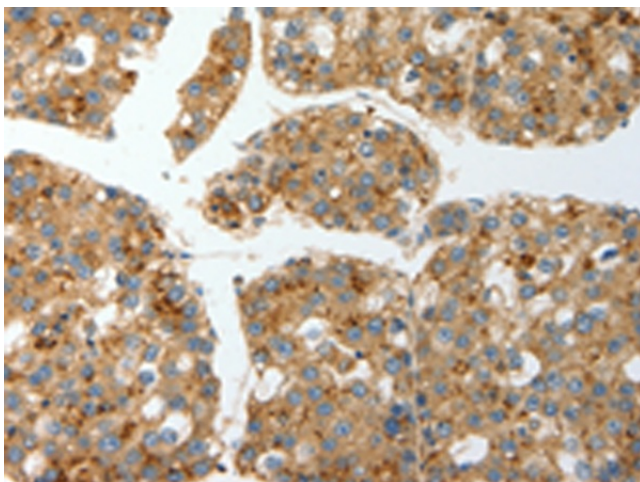
HUMPCP; PCP

Protein Families:

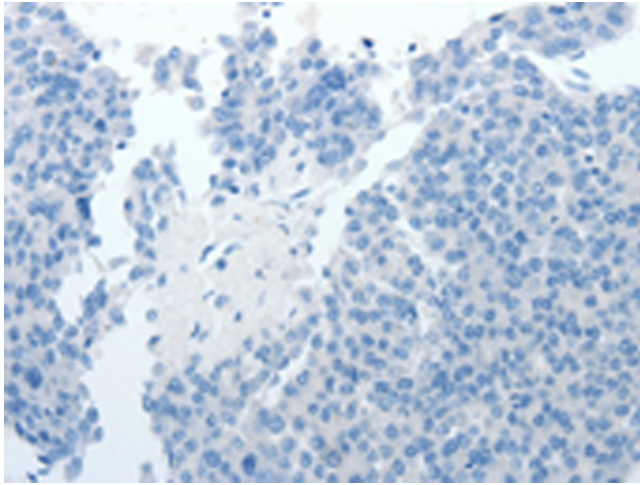
Druggable Genome, Protease, Transmembrane

Product images:

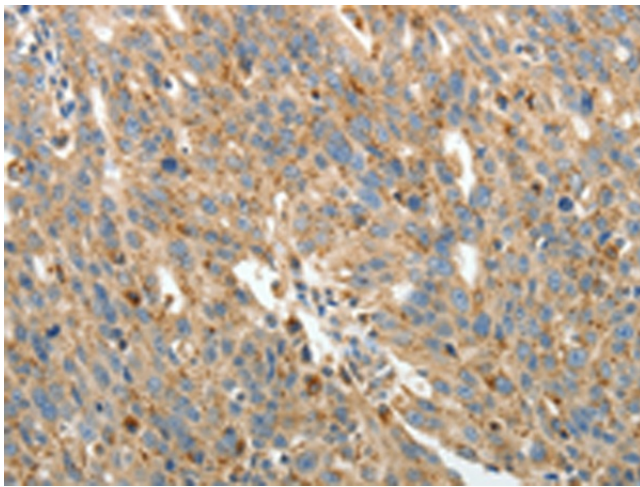
Gel: 10%SDS-PAGE
Lysate: 50 µg
Lane 1-3: SKOV3 cells
A549 cells
human liver cancer tissue
Primary antibody: TA322678 (PRCP Antibody) at dilution 1/100
Secondary antibody: Goat anti rabbit IgG at 1/8000 dilution
Exposure time: 5 minutes



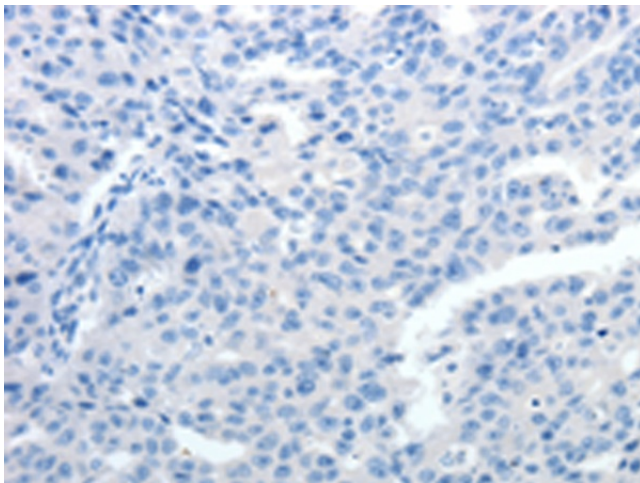
Immunohistochemistry of paraffin-embedded Human liver cancer tissue using TA322678 (PRCP Antibody) at dilution 1/15 (Original magnification: ×200)



Immunohistochemistry of paraffin-embedded Human liver cancer tissue using TA322678 (PRCP Antibody) at dilution 1/15, treated with fusion protein. (Original magnification: x200)



Immunohistochemistry of paraffin-embedded Human ovarian cancer tissue using TA322678 (PRCP Antibody) at dilution 1/15 (Original magnification: x200)



Immunohistochemistry of paraffin-embedded Human ovarian cancer tissue using TA322678 (PRCP Antibody) at dilution 1/15, treated with fusion protein. (Original magnification: x200)