

Product datasheet for **TA322676S**

EAAT4 (SLC1A6) Rabbit Polyclonal Antibody

Product data:

Product Type:	Primary Antibodies
Applications:	IHC, WB
Recommended Dilution:	WB: 500-2000 WB positive control: Human testis tissue and A375 cells IHC: 50-200 Positive control: Human liver cancer Predicted cell location: Cytoplasm
Reactivity:	Human, Mouse, Rat
Host:	Rabbit
Isotype:	IgG
Clonality:	Polyclonal
Immunogen:	Synthetic peptide corresponding to a region derived from 205-220 amino acids of Human Solute carrier family 1 member 6
Formulation:	PBS pH7.3, 0.05% NaN ₃ , 50% glycerol
Purification:	Antigen affinity purification
Conjugation:	Unconjugated
Storage:	Store at -20°C as received.
Stability:	Stable for 12 months from date of receipt.
Predicted Protein Size:	62 kDa
Gene Name:	solute carrier family 1 member 6
Database Link:	NP_005062 Entrez Gene 20513 Mouse Entrez Gene 84012 Rat Entrez Gene 6511 Human P48664
Background:	Excitatory amino-acid transporter 4 (EAAT4) is a protein that in humans is encoded by the SLC1A6 gene. It is a member of the high-affinity glutamate and neutral amino acid-transporter family. It transports L-glutamate and also L- and D-aspartate predominantly in the cerebellar cortex. Genetic polymorphism in the SLC1A6 gene is suggested to be referred to glutamatergic dysfunction in schizophrenia pathogenesis.

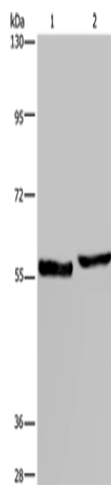


[View online »](#)

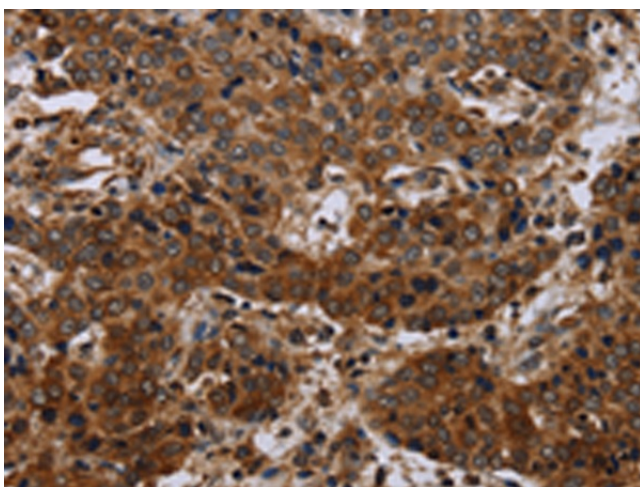
Synonyms: EAAT4

Protein Families: Transmembrane

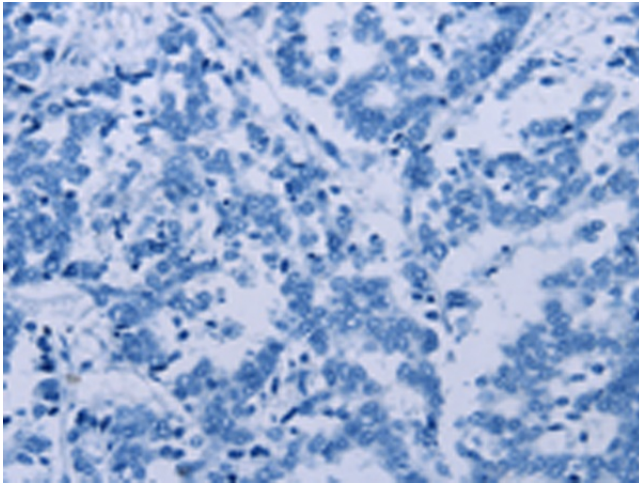
Product images:



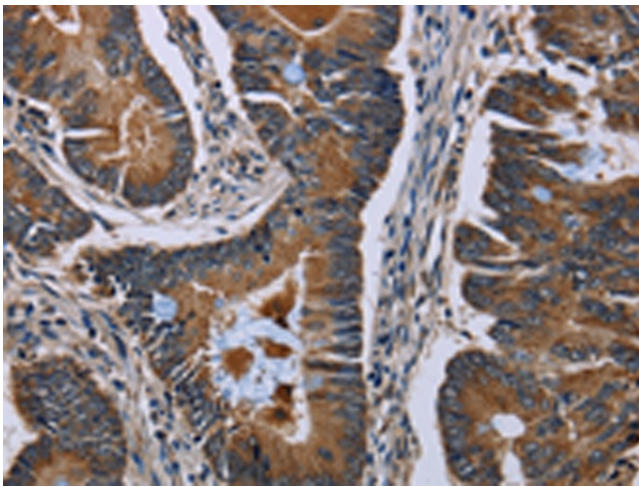
Gel: 6%SDS-PAGE
Lysate: 40 μ g
Lane 1-2: Human testis tissue
A375 cells
Primary antibody: [TA322676] (SLC1A6 Antibody)
at dilution 1/400
Secondary antibody: Goat anti rabbit IgG at
1/8000 dilution
Exposure time: 10 seconds



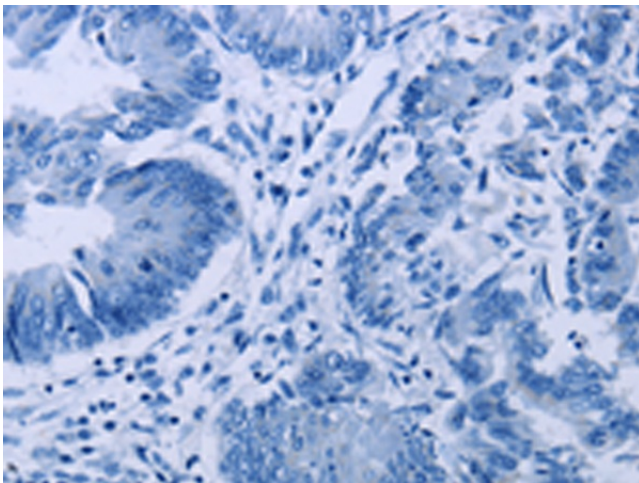
Immunohistochemistry of paraffin-embedded
Human liver cancer tissue using [TA322676]
(SLC1A6 Antibody) at dilution 1/40 (Original
magnification: $\times 200$)



Immunohistochemistry of paraffin-embedded Human liver cancer tissue using [TA322676] (SLC1A6 Antibody) at dilution 1/40, treated with synthetic peptide. (Original magnification: ×200)



Immunohistochemistry of paraffin-embedded Human colon cancer tissue using [TA322676] (SLC1A6 Antibody) at dilution 1/40 (Original magnification: ×200)



Immunohistochemistry of paraffin-embedded Human colon cancer tissue using [TA322676] (SLC1A6 Antibody) at dilution 1/40, treated with synthetic peptide. (Original magnification: ×200)