

Product datasheet for **TA322676**

EAAT4 (SLC1A6) Rabbit Polyclonal Antibody

Product data:

Product Type:	Primary Antibodies
Applications:	IHC, WB
Recommended Dilution:	WB: 500-2000 WB positive control: Human testis tissue and A375 cells IHC: 50-200 Positive control: Human liver cancer Predicted cell location: Cytoplasm
Reactivity:	Human, Mouse, Rat
Host:	Rabbit
Isotype:	IgG
Clonality:	Polyclonal
Immunogen:	Synthetic peptide corresponding to a region derived from 205-220 amino acids of Human Solute carrier family 1 member 6
Formulation:	PBS pH7.3, 0.05% NaN ₃ , 50% glycerol
Concentration:	lot specific
Purification:	Antigen affinity purification
Conjugation:	Unconjugated
Storage:	Store at -20°C as received.
Stability:	Stable for 12 months from date of receipt.
Predicted Protein Size:	62 kDa
Gene Name:	solute carrier family 1 member 6
Database Link:	NP_005062 Entrez Gene 20513 Mouse Entrez Gene 84012 Rat Entrez Gene 6511 Human P48664



[View online »](#)

Background:

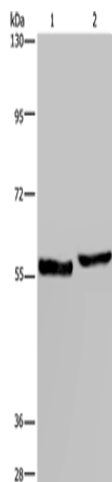
Excitatory amino-acid transporter 4 (EAAT4) is a protein that in humans is encoded by the SLC1A6 gene. It is a member of the high-affinity glutamate and neutral amino acid-transporter family. It transports L-glutamate and also L- and D-aspartate predominantly in the cerebellar cortex. Genetic polymorphism in the SLC1A6 gene is suggested to be referred to glutamatergic dysfunction in schizophrenia pathogenesis.

Synonyms:

EAAT4

Protein Families:

Transmembrane

Product images:

Gel: 6%SDS-PAGE

Lysate: 40 μ g

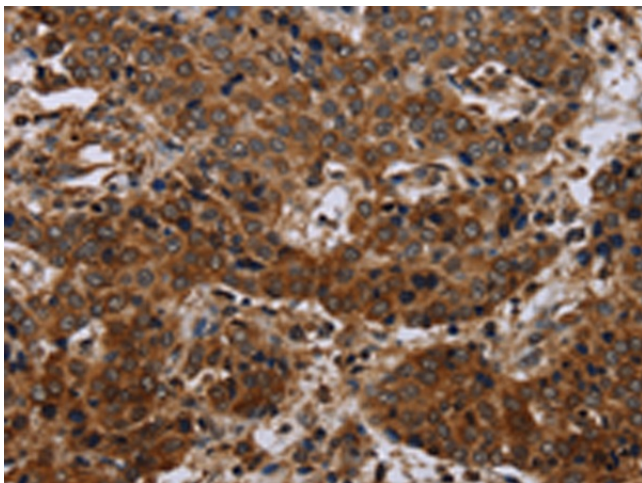
Lane 1-2: Human testis tissue

A375 cells

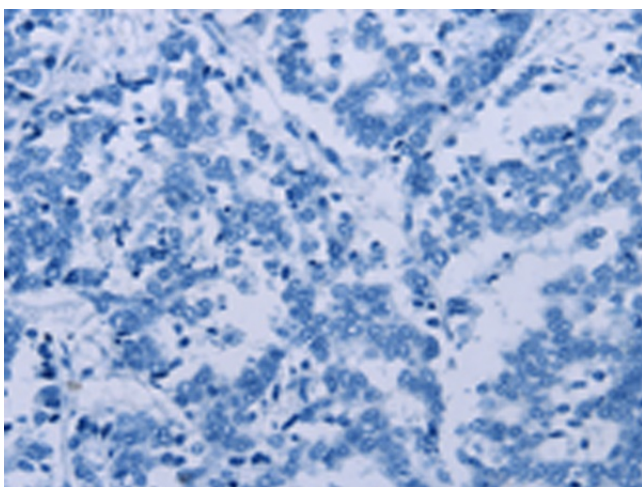
Primary antibody: TA322676 (SLC1A6 Antibody) at dilution 1/400

Secondary antibody: Goat anti rabbit IgG at 1/8000 dilution

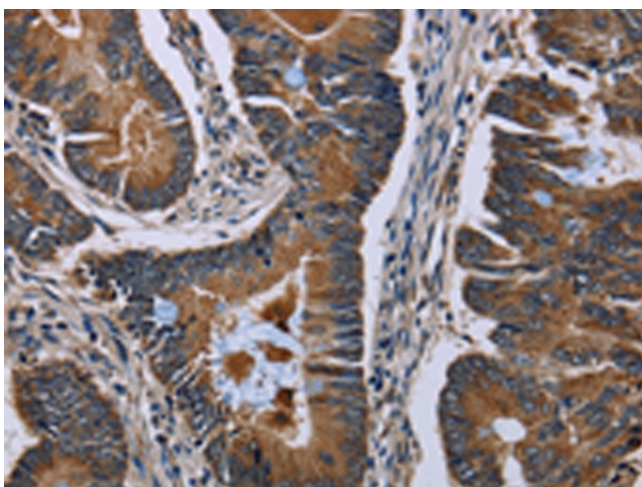
Exposure time: 10 seconds



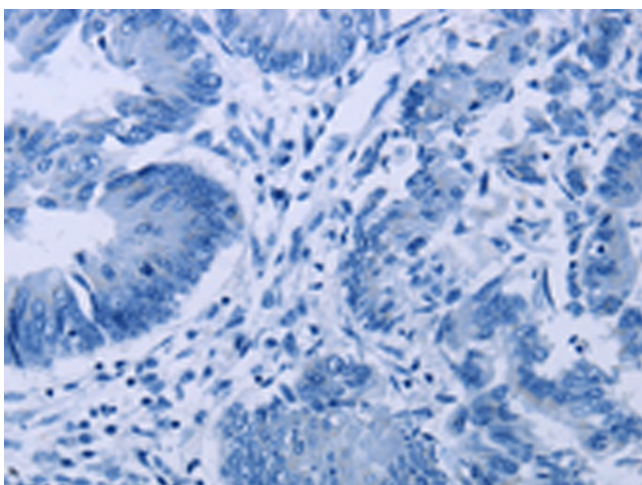
Immunohistochemistry of paraffin-embedded Human liver cancer tissue using TA322676 (SLC1A6 Antibody) at dilution 1/40 (Original magnification: \times 200)



Immunohistochemistry of paraffin-embedded Human liver cancer tissue using TA322676 (SLC1A6 Antibody) at dilution 1/40, treated with synthetic peptide. (Original magnification: ×200)



Immunohistochemistry of paraffin-embedded Human colon cancer tissue using TA322676 (SLC1A6 Antibody) at dilution 1/40 (Original magnification: ×200)



Immunohistochemistry of paraffin-embedded Human colon cancer tissue using TA322676 (SLC1A6 Antibody) at dilution 1/40, treated with synthetic peptide. (Original magnification: ×200)