

## Product datasheet for **TA322670**

### AKAP12 Rabbit Polyclonal Antibody

#### Product data:

Product Type:	Primary Antibodies
Applications:	IHC, WB
Recommended Dilution:	WB: 200-1000 WB positive control: HT-29 cells IHC: 50-200 Positive control: Human brain Predicted cell location: Cytoplasm
Reactivity:	Human
Host:	Rabbit
Isotype:	IgG
Clonality:	Polyclonal
Immunogen:	Synthetic peptide corresponding to a region derived from 1768-1782 amino acids of human A kinase (PRKA) anchor protein 12
Formulation:	PBS pH7.3, 0.05% NaN <sub>3</sub> , 50% glycerol
Concentration:	lot specific
Purification:	Antigen affinity purification
Conjugation:	Unconjugated
Storage:	Store at -20°C as received.
Stability:	Stable for 12 months from date of receipt.
Predicted Protein Size:	191 kDa
Gene Name:	A-kinase anchoring protein 12
Database Link:	<a href="#">NP_005091</a> <a href="#">Entrez Gene 9590 Human</a> <a href="#">Q02952</a>



[View online »](#)

**Background:**

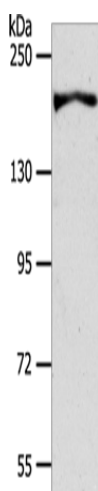
The A-kinase anchor proteins (AKAPs) are a group of structurally diverse proteins; which have the common function of binding to the regulatory subunit of protein kinase A (PKA) and confining the holoenzyme to discrete locations within the cell. This gene encodes a member of the AKAP family. The encoded protein is expressed in endothelial cells; cultured fibroblasts; and osteosarcoma cells. It associates with protein kinases A and C and phosphatase; and serves as a scaffold protein in signal transduction. This protein and RII PKA colocalize at the cell periphery. This protein is a cell growth-related protein. Antibodies to this protein can be produced by patients with myasthenia gravis. Alternative splicing of this gene results in two transcript variants encoding different isoforms.

**Synonyms:**

AKAP250; SSeCKS

**Protein Families:**

Druggable Genome

**Product images:**

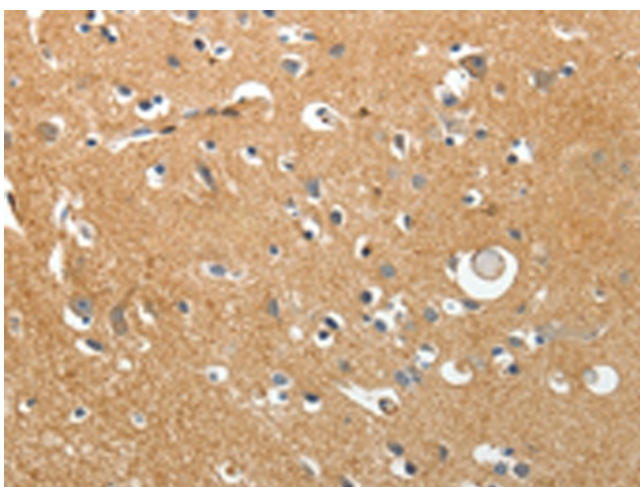
Gel: 8%SDS-PAGE

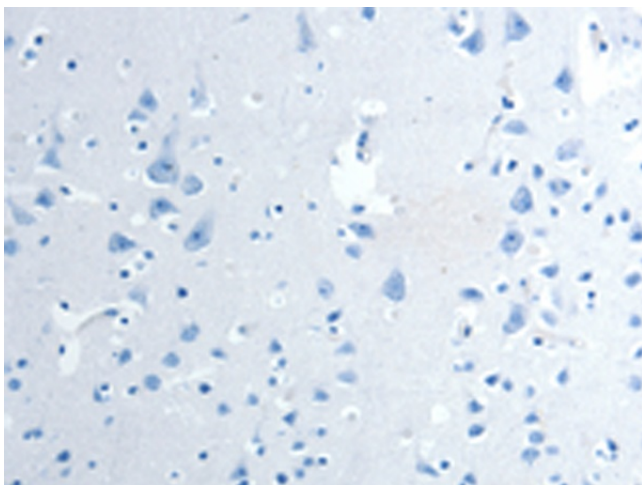
Lysate: 40 µg

Lane: HT29 cells

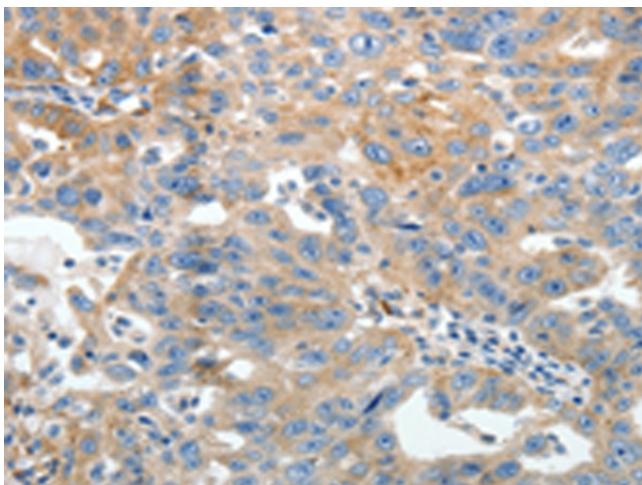
Primary antibody: TA322670 (AKAP12 Antibody)  
at dilution 1/600Secondary antibody: Goat anti rabbit IgG at  
1/8000 dilution

Exposure time: 40 seconds

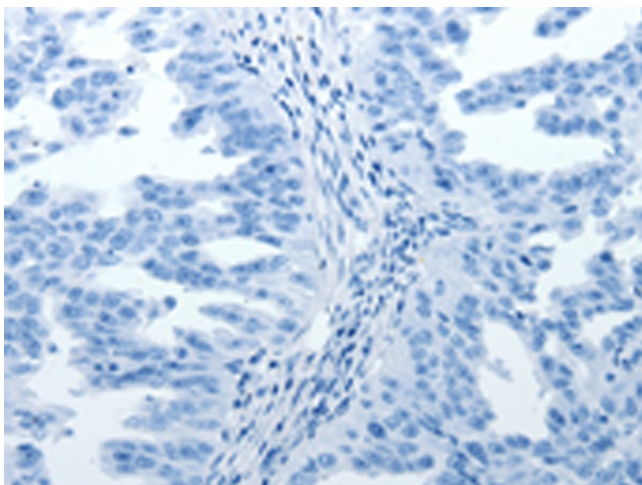
Immunohistochemistry of paraffin-embedded  
Human brain tissue using TA322670 (AKAP12  
Antibody) at dilution 1/40 (Original magnification:  
×200)



Immunohistochemistry of paraffin-embedded Human brain tissue using TA322670 (AKAP12 Antibody) at dilution 1/40, treated with synthetic peptide. (Original magnification:  $\times 200$ )



Immunohistochemistry of paraffin-embedded Human ovarian cancer tissue using TA322670 (AKAP12 Antibody) at dilution 1/40 (Original magnification:  $\times 200$ )



Immunohistochemistry of paraffin-embedded Human ovarian cancer tissue using TA322670 (AKAP12 Antibody) at dilution 1/40, treated with synthetic peptide. (Original magnification:  $\times 200$ )