

Product datasheet for **TA322669S**

AKAP12 Rabbit Polyclonal Antibody

Product data:

| | |
|-----------------------|---|
| Product Type: | Primary Antibodies |
| Applications: | IHC |
| Recommended Dilution: | IHC: 50-200 Positive control: Human brain Predicted cell location: Cytoplasm |
| Reactivity: | Human |
| Host: | Rabbit |
| Isotype: | IgG |
| Clonality: | Polyclonal |
| Immunogen: | Synthetic peptide corresponding to a region derived from 1768-1782 amino acids of human A kinase (PRKA) anchor protein 12 |
| Formulation: | PBS pH7.3, 0.05% NaN ₃ , 50% glycerol |
| Purification: | Antigen affinity purification |
| Conjugation: | Unconjugated |
| Storage: | Store at -20°C as received. |
| Stability: | Stable for 12 months from date of receipt. |
| Gene Name: | A-kinase anchoring protein 12 |
| Database Link: | NP_005091 Entrez Gene 9590 Human Q02952 |

Background: The A-kinase anchor proteins (AKAPs) are a group of structurally diverse proteins; which have the common function of binding to the regulatory subunit of protein kinase A (PKA) and confining the holoenzyme to discrete locations within the cell. This gene encodes a member of the AKAP family. The encoded protein is expressed in endothelial cells; cultured fibroblasts; and osteosarcoma cells. It associates with protein kinases A and C and phosphatase; and serves as a scaffold protein in signal transduction. This protein and RII PKA colocalize at the cell periphery. This protein is a cell growth-related protein. Antibodies to this protein can be produced by patients with myasthenia gravis. Alternative splicing of this gene results in two transcript variants encoding different isoforms.

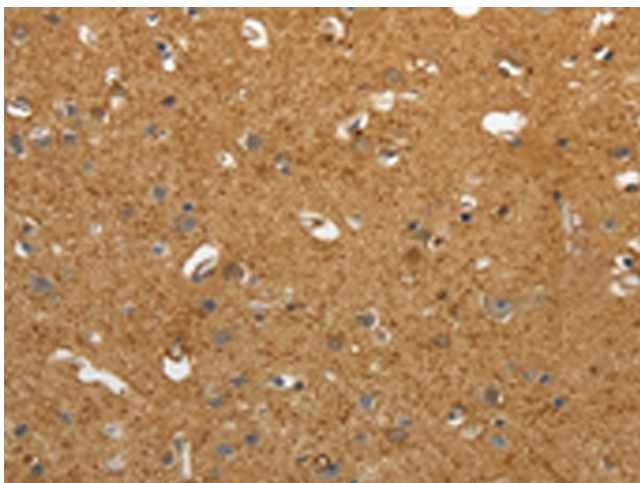


[View online »](#)

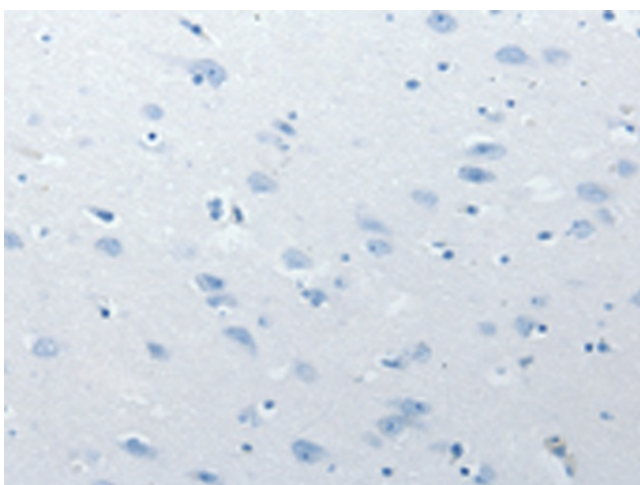
Synonyms: AKAP250; SSeCKS

Protein Families: Druggable Genome

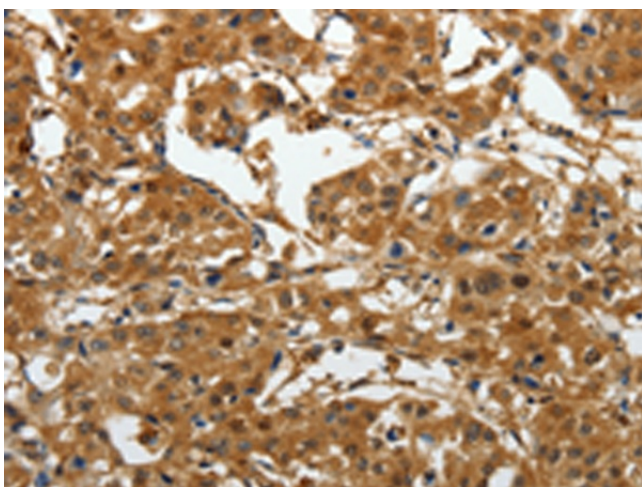
Product images:



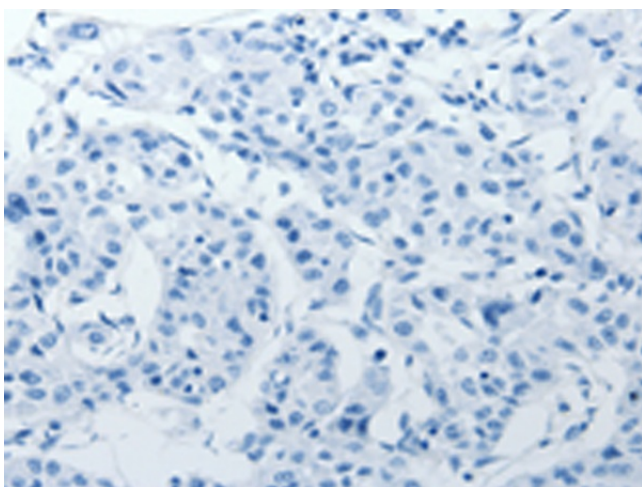
Immunohistochemistry of paraffin-embedded Human brain tissue using [TA322669] (AKAP12 Antibody) at dilution 1/40 (Original magnification: $\times 200$)



Immunohistochemistry of paraffin-embedded Human brain tissue using [TA322669] (AKAP12 Antibody) at dilution 1/40, treated with synthetic peptide. (Original magnification: $\times 200$)



Immunohistochemistry of paraffin-embedded Human lung cancer tissue using [TA322669] (AKAP12 Antibody) at dilution 1/40 (Original magnification: $\times 200$)



Immunohistochemistry of paraffin-embedded Human lung cancer tissue using [TA322669] (AKAP12 Antibody) at dilution 1/40, treated with synthetic peptide. (Original magnification: $\times 200$)