

Product datasheet for **TA322669**

AKAP12 Rabbit Polyclonal Antibody

Product data:

Product Type:	Primary Antibodies
Applications:	IHC
Recommended Dilution:	IHC: 50-200 Positive control: Human brain Predicted cell location: Cytoplasm
Reactivity:	Human
Host:	Rabbit
Isotype:	IgG
Clonality:	Polyclonal
Immunogen:	Synthetic peptide corresponding to a region derived from 1768-1782 amino acids of human A kinase (PRKA) anchor protein 12
Formulation:	PBS pH7.3, 0.05% NaN ₃ , 50% glycerol
Concentration:	lot specific
Purification:	Antigen affinity purification
Conjugation:	Unconjugated
Storage:	Store at -20°C as received.
Stability:	Stable for 12 months from date of receipt.
Gene Name:	A-kinase anchoring protein 12
Database Link:	NP_005091 Entrez Gene 9590 Human Q02952



[View online »](#)

Background:

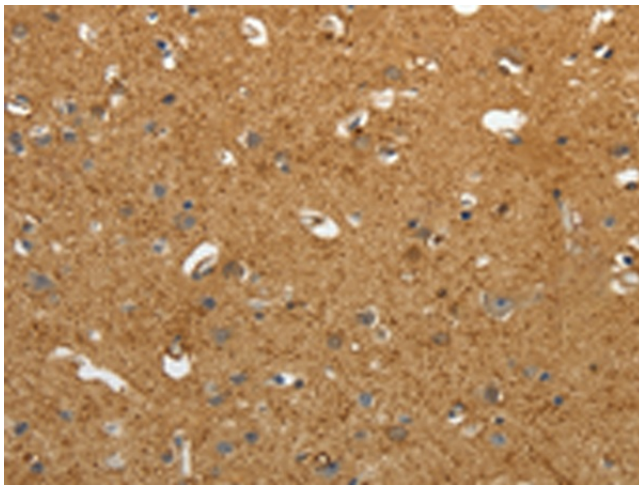
The A-kinase anchor proteins (AKAPs) are a group of structurally diverse proteins; which have the common function of binding to the regulatory subunit of protein kinase A (PKA) and confining the holoenzyme to discrete locations within the cell. This gene encodes a member of the AKAP family. The encoded protein is expressed in endothelial cells; cultured fibroblasts; and osteosarcoma cells. It associates with protein kinases A and C and phosphatase; and serves as a scaffold protein in signal transduction. This protein and RII PKA colocalize at the cell periphery. This protein is a cell growth-related protein. Antibodies to this protein can be produced by patients with myasthenia gravis. Alternative splicing of this gene results in two transcript variants encoding different isoforms.

Synonyms:

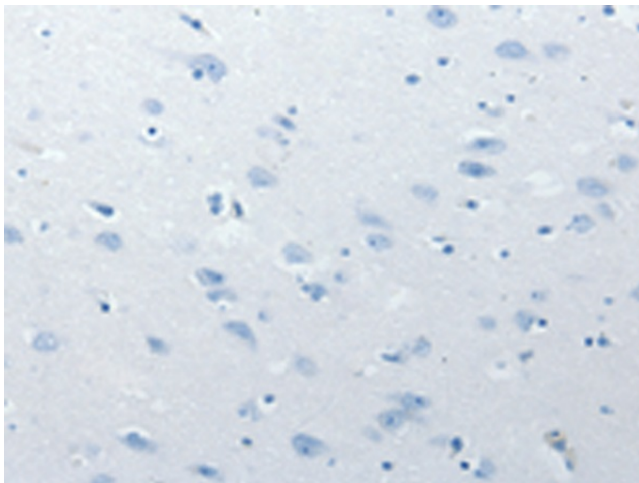
AKAP250; SSeCKS

Protein Families:

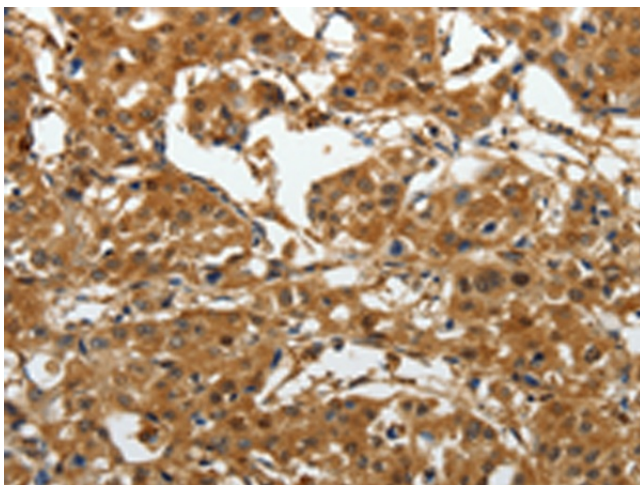
Druggable Genome

Product images:

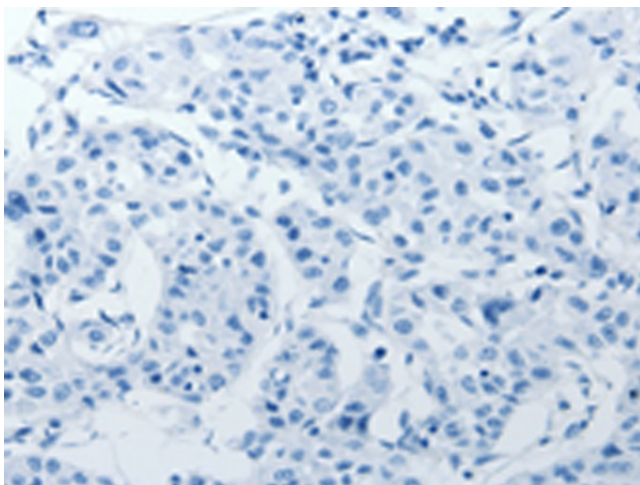
Immunohistochemistry of paraffin-embedded Human brain tissue using TA322669 (AKAP12 Antibody) at dilution 1/40 (Original magnification: ×200)



Immunohistochemistry of paraffin-embedded Human brain tissue using TA322669 (AKAP12 Antibody) at dilution 1/40, treated with synthetic peptide. (Original magnification: ×200)



Immunohistochemistry of paraffin-embedded Human lung cancer tissue using TA322669 (AKAP12 Antibody) at dilution 1/40 (Original magnification: $\times 200$)



Immunohistochemistry of paraffin-embedded Human lung cancer tissue using TA322669 (AKAP12 Antibody) at dilution 1/40, treated with synthetic peptide. (Original magnification: $\times 200$)