

## Product datasheet for **TA322668**

### MVP Rabbit Polyclonal Antibody

#### Product data:

Product Type:	Primary Antibodies
Applications:	IHC, WB
Recommended Dilution:	WB: 500-2000 WB positive control: 231 cells and mouse kidney tissue IHC: 25-100 Positive control: Human lung cancer Predicted cell location: Cytoplasm
Reactivity:	Human, Mouse, Rat
Host:	Rabbit
Isotype:	IgG
Clonality:	Polyclonal
Immunogen:	Fusion protein corresponding to a C terminal 300 amino acids of human major vault protein
Formulation:	PBS pH7.3, 0.05% NaN <sub>3</sub> , 50% glycerol
Concentration:	lot specific
Purification:	Antigen affinity purification
Conjugation:	Unconjugated
Storage:	Store at -20°C as received.
Stability:	Stable for 12 months from date of receipt.
Predicted Protein Size:	99 kDa
Gene Name:	major vault protein
Database Link:	<a href="#">NP_005106</a> <a href="#">Entrez Gene 64681 Rat</a> <a href="#">Entrez Gene 78388 Mouse</a> <a href="#">Entrez Gene 9961 Human</a> <a href="#">Q14764</a>



[View online »](#)

**Background:**

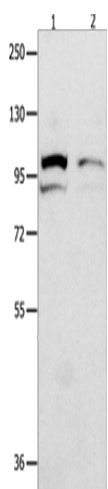
This gene encodes the major component of the vault complex. Vaults are multi-subunit ribonucleoprotein structures that may be involved in nucleo-cytoplasmic transport. The encoded protein may play a role in multiple cellular processes by regulating the MAP kinase; JAK/STAT and phosphoinositide 3-kinase/Akt signaling pathways. The encoded protein also plays a role in multidrug resistance; and expression of this gene may be a prognostic marker for several types of cancer. Alternatively spliced transcript variants have been observed for this gene.

**Synonyms:**

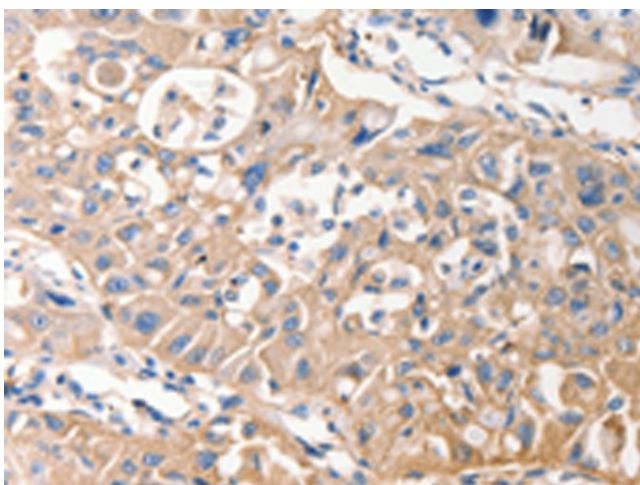
LRP; VAULT1

**Protein Families:**

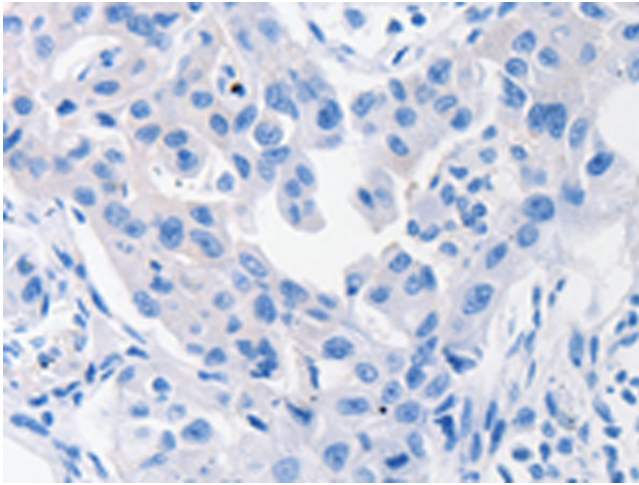
Druggable Genome

**Product images:**

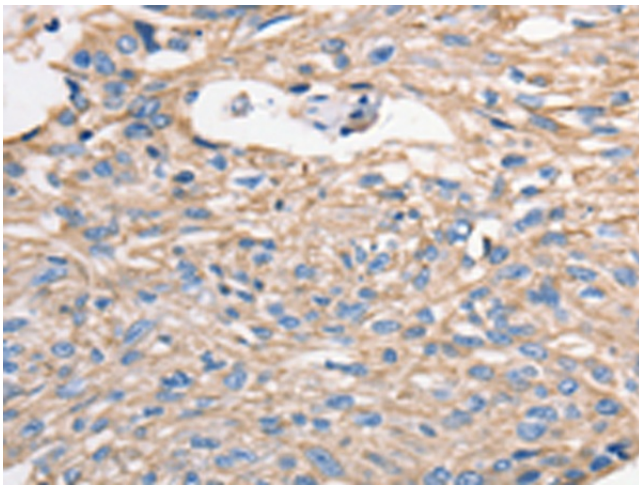
Gel: 8%SDS-PAGE  
Lysate: 50  $\mu$ g  
Lane 1-2: 231 cells  
mouse kidney tissue  
Primary antibody: TA322668 (MVP Antibody) at  
dilution 1/500  
Secondary antibody: Goat anti rabbit IgG at  
1/8000 dilution  
Exposure time: 1 second



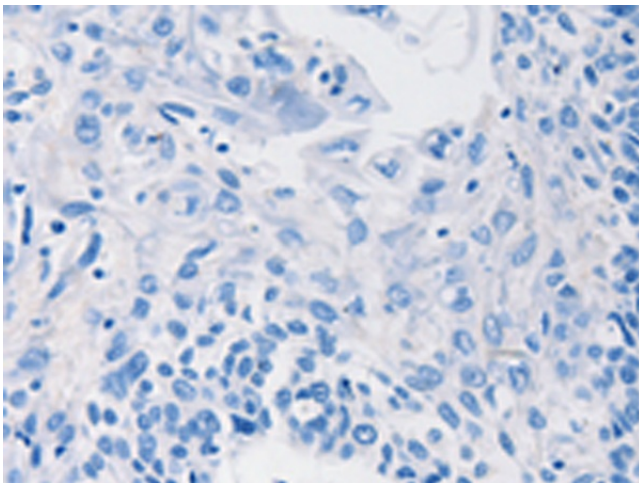
Immunohistochemistry of paraffin-embedded  
Human lung cancer tissue using TA322668 (MVP  
Antibody) at dilution 1/40 (Original magnification:  
 $\times$ 200)



Immunohistochemistry of paraffin-embedded Human lung cancer tissue using TA322668 (MVP Antibody) at dilution 1/40, treated with fusion protein. (Original magnification: x200)



Immunohistochemistry of paraffin-embedded Human esophagus cancer tissue using TA322668 (MVP Antibody) at dilution 1/40 (Original magnification: x200)



Immunohistochemistry of paraffin-embedded Human esophagus cancer tissue using TA322668 (MVP Antibody) at dilution 1/40, treated with fusion protein. (Original magnification: x200)