

Product datasheet for **TA322660S**

CBX2 Rabbit Polyclonal Antibody

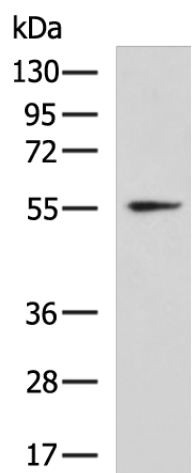
Product data:

Product Type:	Primary Antibodies
Applications:	WB
Recommended Dilution:	WB: 500-2000 WB positive control: Mouse heart tissue lysate
Reactivity:	Human, Mouse
Host:	Rabbit
Isotype:	IgG
Clonality:	Polyclonal
Immunogen:	Full length fusion protein
Formulation:	PBS pH7.3, 0.05% NaN ₃ , 50% glycerol
Purification:	Antigen affinity purification
Conjugation:	Unconjugated
Storage:	Store at -20°C as received.
Stability:	Stable for 12 months from date of receipt.
Predicted Protein Size:	23 kDa
Gene Name:	chromobox 2
Database Link:	NP_005180 Entrez Gene 12416 Mouse Entrez Gene 84733 Human Q14781
Background:	This gene encodes a component of the polycomb multiprotein complex; which is required to maintain the transcriptionally repressive state of many genes throughout development via chromatin remodeling and modification of histones. Disruption of this gene in mice results in male-to-female gonadal sex reversal. Mutations in this gene are also associated with gonadal dysgenesis in humans. Alternatively spliced transcript variants encoding different isoforms have been noted for this gene.
Synonyms:	CDCA6; M33; SRXY5
Protein Families:	Transcription Factors



[View online »](#)

Product images:



Gel: 8%SDS-PAGE

Lysate: 40 μ g

Lane: Mouse heart tissue lysate

Primary antibody: [TA322660] (CBX2 Antibody) at dilution 1/700

Secondary antibody: Goat anti rabbit IgG at 1/5000 dilution

Exposure time: 1 minute