

Product datasheet for **TA322659**

CEBPD Rabbit Polyclonal Antibody

Product data:

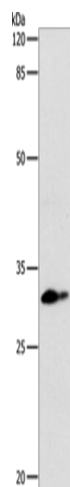
Product Type:	Primary Antibodies
Applications:	WB
Recommended Dilution:	WB: 200-1000 WB positive control: Mouse lung tissue
Reactivity:	Human, Mouse, Rat
Host:	Rabbit
Isotype:	IgG
Clonality:	Polyclonal
Immunogen:	Synthetic peptide corresponding to a region derived from 210-225 amino acids of Human CCAAT/enhancer-binding protein delta
Formulation:	PBS pH7.3, 0.05% NaN ₃ , 50% glycerol
Concentration:	lot specific
Purification:	Antigen affinity purification
Conjugation:	Unconjugated
Storage:	Store at -20°C as received.
Stability:	Stable for 12 months from date of receipt.
Predicted Protein Size:	29 kDa
Gene Name:	CCAAT/enhancer binding protein delta
Database Link:	NP_005186 Entrez Gene 12609 Mouse Entrez Gene 25695 Rat Entrez Gene 1052 Human P49716
Background:	The protein encoded by this intronless gene is a bZIP transcription factor which can bind as a homodimer to certain DNA regulatory regions. It can also form heterodimers with the related protein CEBP-alpha. The encoded protein is important in the regulation of genes involved in immune and inflammatory responses; and may be involved in the regulation of genes associated with activation and/or differentiation of macrophages. The cytogenetic location of this locus has been reported as both 8p11 and 8q11.
Synonyms:	C; CELF; CRP3; EBP-delta; NF-IL6-beta



[View online »](#)

Protein Families: Druggable Genome, Transcription Factors

Product images:



Gel: 10%SDS-PAGE
Lysate: 24 μ g
Lane: Mouse lung tissue
Primary antibody: TA322659 (CEBPD Antibody) at dilution 1/250
Secondary antibody: Goat anti rabbit IgG at 1/8000 dilution
Exposure time: 30 seconds